



HEATING SYSTEMS

THERMO AC 070/200

Installation and operating instructions

Rev. 01/2025
Id.No. 11142988C-001

SPHEROS

Highlighted words like Warning, Caution, ATTENTION and NOTE in these installation and operating instructions signify the following precautions:



Warning!
Warnung!

This caption is used to indicate possible severe injuries or fatal accidents if instructions or procedures are carried out incorrectly or entirely disregarded.



Caution!
Vorsicht!

This caption is used to indicate possible minor injuries if instructions or procedures are carried out incorrectly or entirely disregarded.

ATTENTION:
ACHTUNG:

This caption points to actions which may cause material damage.

NOTE:
HINWEIS:

This caption is used to draw attention to an important feature.

NOTE: Subject to modification. In multilingual versions the German language is binding. The latest version of this document you will find in the download center on www.spheros.com.



Table of contents

1	Statutory regulations governing installation	1
	1.1. Statutory regulations governing installation	1
	1.2. Model plate	2
2	Safety regulations	3
3	Use / Version	4
	3.1. Installation example	5
4	Operating and maintenance instructions	6
5	Installation	7
	5.1. Additional potential equalization (PE)	7
	5.2. 400V supply line	7
	5.3. Overcurrent Protection / fault current protection	11
	5.4. External power supply hook up	12
	5.5. Testing the installation	12
6	Maintenance	13
7	Faults, troubleshooting, repairs	14
8	Control elements	15
	8.1. Switch or relay	15
	8.2. Pre-selection timer	16
	8.3. Operation indicator	17
9	Circulation pump	18
10	Switching thresholds	18
11	Installation of the heater - fitting of important assemblies	
19		
	11.1.Installation	19
	11.2.Connection to the vehicle's cooling system	22
	11.3.Installation of the circulating pump	23
	11.4.Tightening torques	24
12	Technical data	25

1 Statutory regulations governing installation

1.1. Statutory regulations governing installation

For the heater exists a type approval according to the ECE Regulations R10 (EMC) No. 06 6641 and R122 (Heater) No. 00 0377.

Installation is governed above all by the provisions in Annex 7 of the ECE Regulation R122. In addition, the electrical safety requirements of ECE Regulation R100 are to be observed.

NOTE: The provisions of these Regulations are binding within the territory governed by ECE Regulations and should similarly be observed in countries without specific regulations!

Extract from ECE Regulation R122, Annex 7:

4 The heater must have a manufacturer's label showing the manufacturer's name, the model number and type together with its rated output in kilowatts. The operating voltage and the electric power must also be stated.

7.1 A clearly visible tell-tale in the operator's field of view shall inform when the heater is switched on or off.

Extract from ECE Regulation R122, Part I:

5.3 Installation Requirements for Combustion Heaters and Electrical Heaters into Vehicles

5.3.1 Scope

5.3.1.1 Subject to paragraph 5.3.1.2., heaters shall be installed according to the requirements of paragraph 5.3.

5.3.2 Positioning of combustion heater

5.3.2.1 Body sections and any other components in the vicinity of the heater must be protected from excessive heat and the possibility of fuel or oil contamination.

5.3.2.2 The heater shall not constitute a risk of fire, even in the case of overheating. This requirement shall be deemed to be met if the installation ensures an adequate distance to all parts and suitable ventilation, by the use of fire resistant materials or by the use of heat shields.

5.3.2.3 In the case of M2 and M3 vehicles, the heater must not be positioned in the passenger compartment. However, an installation in an effectively sealed envelope which also complies with the conditions in paragraph 5.3.2.2 may be used.

5.3.2.4 The label referred to in Annex 7, paragraph 4 or a duplicate, must be positioned so that it can be easily read when the heater is installed in the vehicle.

5.3.2.5 Every reasonable precaution should be taken in positioning the heater to minimize the risk of injury and damage to personal property.

5.3.6 Heating air inlet

not applicable

5.3.7 Heating air outlet

not applicable

 Warning!	Danger to life and health!
---	-----------------------------------

Applicable local regulations, laws and standards for electrical installations, in particular the provisions of ECE Regulation R100 are to be observed by the vehicle manufacturer and should be appropriately implemented.

ATTENTION:

Failure to follow the installation instructions and the notes contained therein will lead to all liability being refused by Spheros. The same applies if repairs are carried out incorrectly or with the use of parts other than genuine spare parts. This results in the invalidation of the type approval of the heater.

1.2. Model plate

The model plate must be protected from damage and must be clearly legible when the heater is installed (otherwise a duplicate model plate must be used).

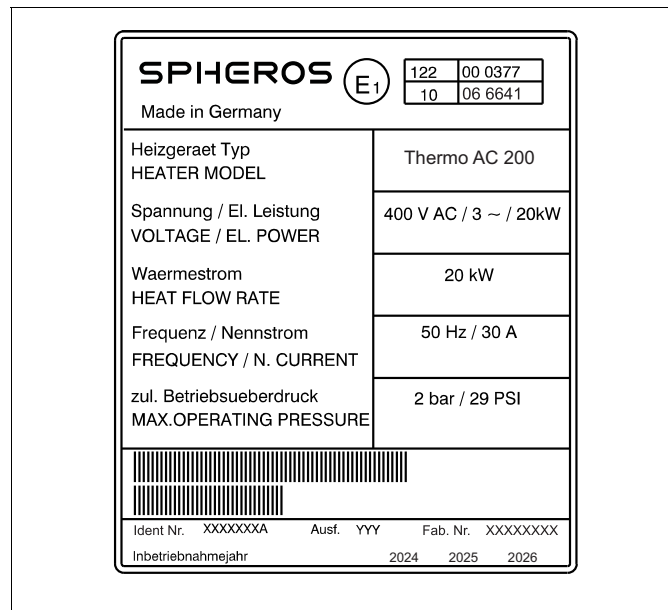


Figure 1: Model plate (example)

NOTE: The year of the initial operation must be durably marked by removing the year numbers that are not applicable.

2 Safety regulations



Installation, maintenance and repairs may only be carried out when the vehicle's engine is not running and the power supply is switched off.

Before starting the work at the heater, it is to make voltageless acc. to DIN VDE 0105-100 and this state must be ensured for the duration of the work.

In particular, the following safety precautions must be observed:

- switch off the power supply to the heater
- ensure it cannot be switched on again
- verify, system is voltage-free, all poles
- ground and short circuit (the de-energized circuit)
- cover neighbouring parts under voltage or secure them against unauthorized entry

Electrical cables and operating elements of the heater must be arranged in the vehicle in such a way that their functioning is faultless under normal operating conditions and cannot be hampered.

Work at electrical equipment may only be started if protective measures against electric shock, short circuits and arcing faults have been carried out.

Electrical work may only be performed by a qualified electrician for HV systems in motor vehicles, craftsman, activity with repetitive character. Training acc. to DGUV 200-005 (previously BGI 8686), at least level 2.

NOTE:

The provisions of these Regulations are binding within the territory governed by DGUV Regulations and should similarly be observed in countries without specific regulations.

Country specific rules / standards are to be considered additionally.

3 Use / Version

The electrical heater can be used in a depot for pre-heating purposes. For this it is connected stably to the depot mains 3/PE/N AC 400/230V 50Hz.

Further more the heater also can be used in electric driven buses or hybrid buses where a 3/PE/N AC 400/230V 50Hz power supply is provided, in association with the vehicle's own heating system:

- to heat the passenger cabin, and
- for pre-heating.

The heater may only be installed and operated in vehicles of the class **M2, M3**.

Any use beyond is not permitted.

The heaters operate independently of the vehicle engine and are connected to the vehicle's cooling and electrical systems.

 Warning!	Danger to life and health!
---	-----------------------------------

The heater is not approved for use in vehicles carrying dangerous goods according to Annex 9 of the UN/ECE Regulation R122.

General Information / Safety

Check the information given on the rating plate of your heater / in the technical data and compare this with your mains voltage!

In addition to the statutory regulations the specific connection conditions of local electricity companies are to be observed.

No alterations to the electrical installation may be undertaken.

The installation and commissioning may only be carried out by a qualified electrician.

Only have any work on the appliance carried out by a specialist company or a qualified person.

The installation instructions are to be considered.

 Caution!	Hot surfaces!
---	----------------------

Under no circumstances touch the heat exchanger and the water hoses during operation, in particular when they are overheated due to lack of water.

Ensure an adequate distance to all surrounding parts and a sufficient ventilation during installation.

Alternately use fire resistant materials or heat shields (see Statutory Regulations governing installation, para. 5.3.2.2).

3.1. Installation example

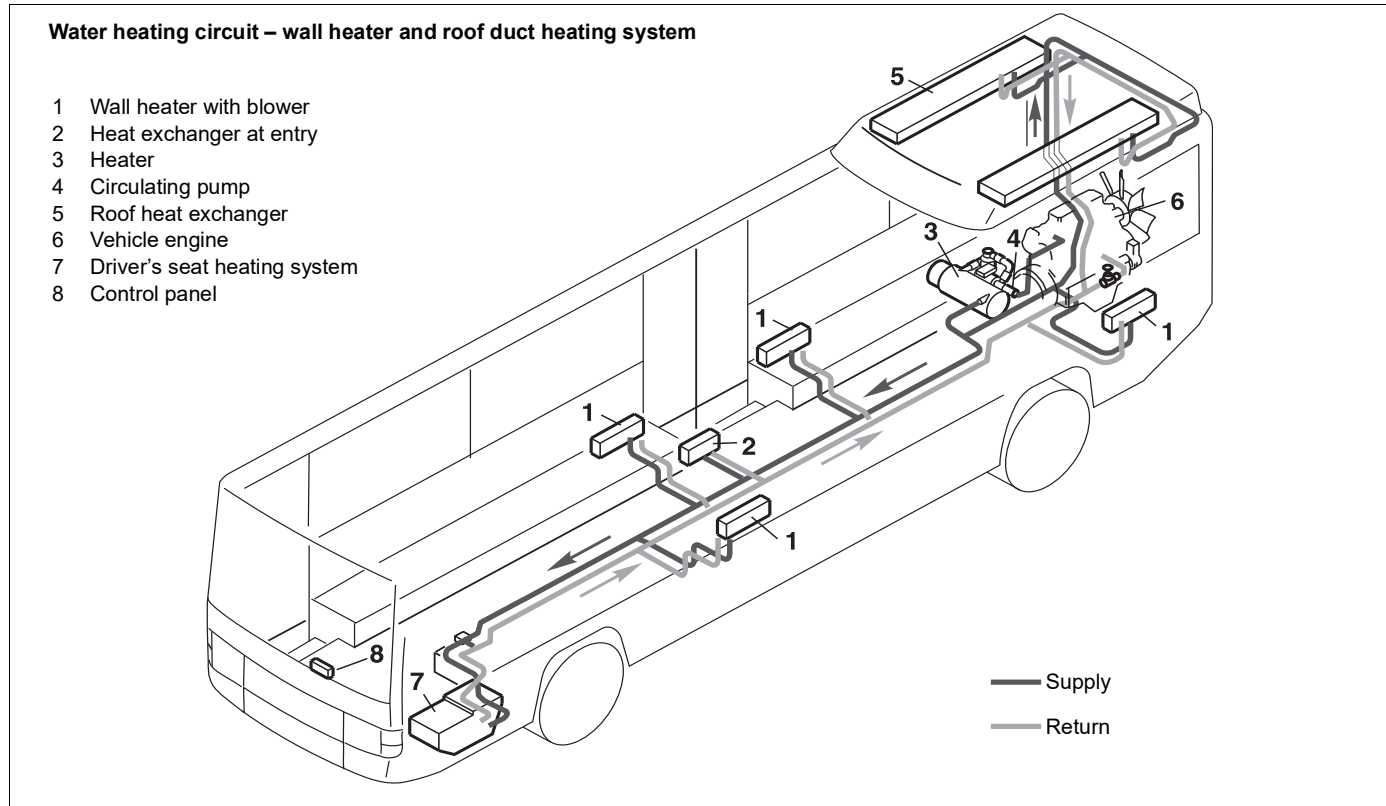


Figure 2: Installation example for the heater

4 Operating and maintenance instructions

The Thermo AC heating appliance may not be operated at temperatures of more than +85°C. Amount of antifreeze in the water circuit - see technical data.

ATTENTION:

The heaters may be only used in closed vehicle systems for warming up water.

They must not be operated in the depot unattended for a longer period. The pump operation, the water cycle and the water temperature of the vehicle should be monitored. In case of any malfunction unplug immediately the 5-pole mains plug.

Another utilization or any utilization going beyond these ones is to be considered as unintended use. The manufacturer/supplier shall not be liable for damages resulting from unintended use; the user shall bear the risk alone.

5 Installation

ATTENTION:

Any changes to the heaters or to the installation described below are strictly prohibited and will void both the warranty and, if applicable, the E1 approval.

5.1. Additional potential equalization (PE)

A grounding cable, at least 1x4 mm² Cu, should be attached to the position on the housing which is marked and provided for it. This is done with a ring cable lug which is fastened with a M10x1 potential equalization screw (for tightening torque, refer to figure 14).

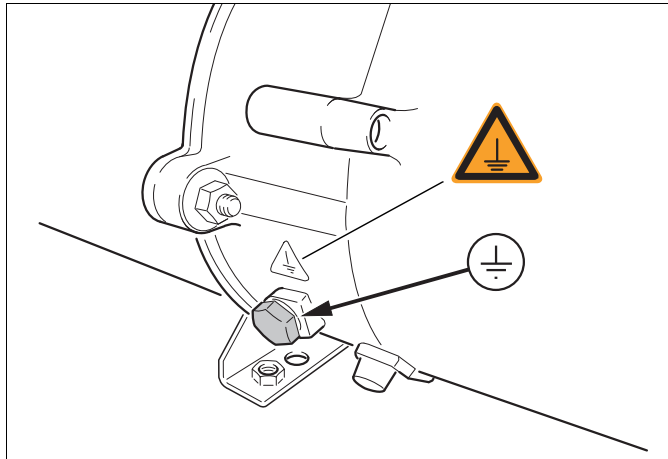


Figure 3: Potential equalization screw

The connecting screws on the heating appliance may only be replaced

with genuine original parts from Spheros, since these are part of the electrical equipment and they ensure proper grounding.

5.2. 400V supply line

The connection line must have a cross section of at least 5 x 4mm² Cu. The cable cross-section must be chosen according to the power and installed cable length. For the cable feed through, the cable gland at the device is to be used.

Use a dedicated power circuit for the heating system.

The appliance must have a fixed connection to the vehicle's 3 phase supply.

The heating appliance must be connected to the protective grounding conductor. The additional potential equalization must also be connected.

The connection must be carried out in accordance with the enclosed connection diagram (see Figure 4).

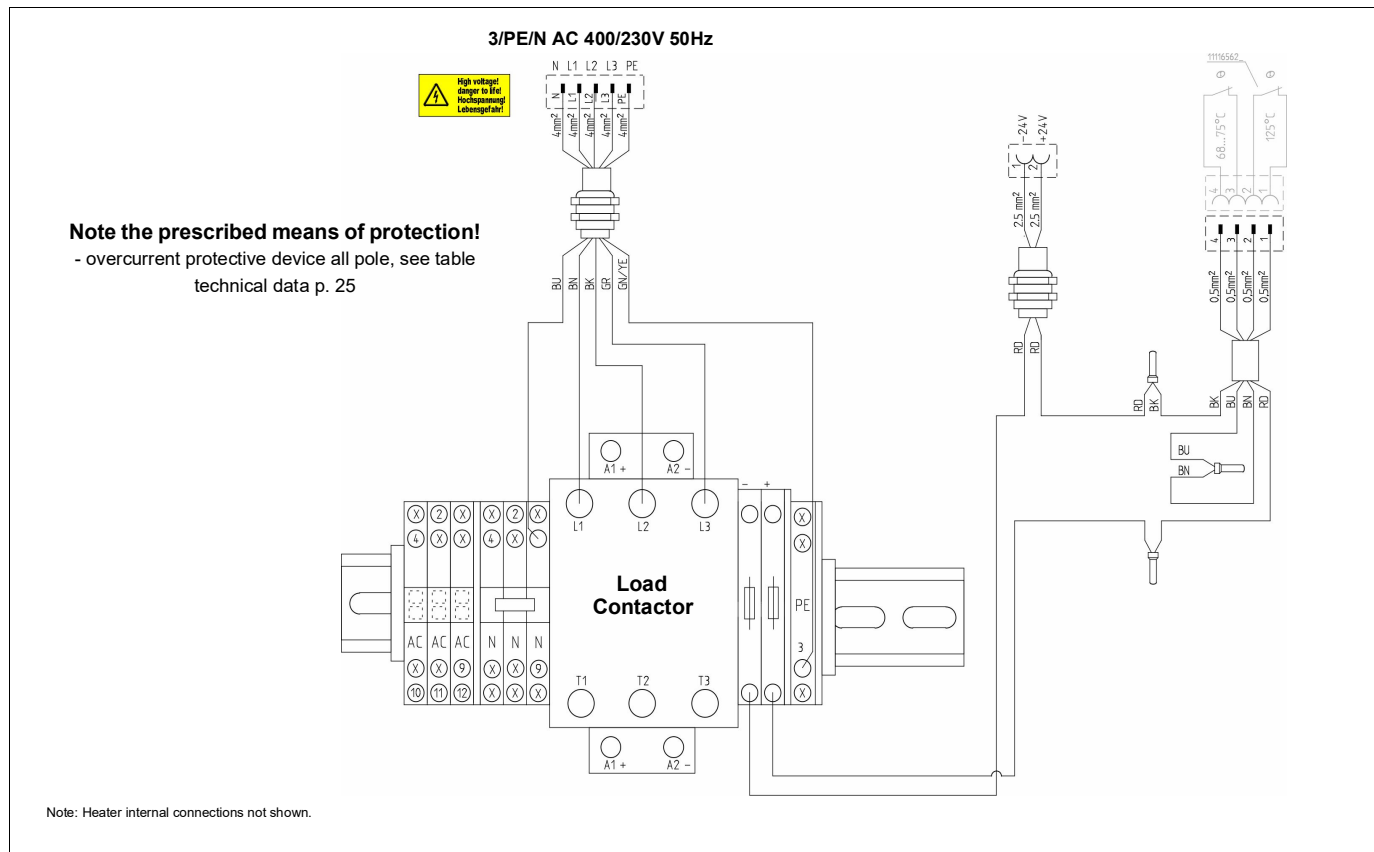


Figure 4: Hook-up plan Thermo AC 070 small distributor board

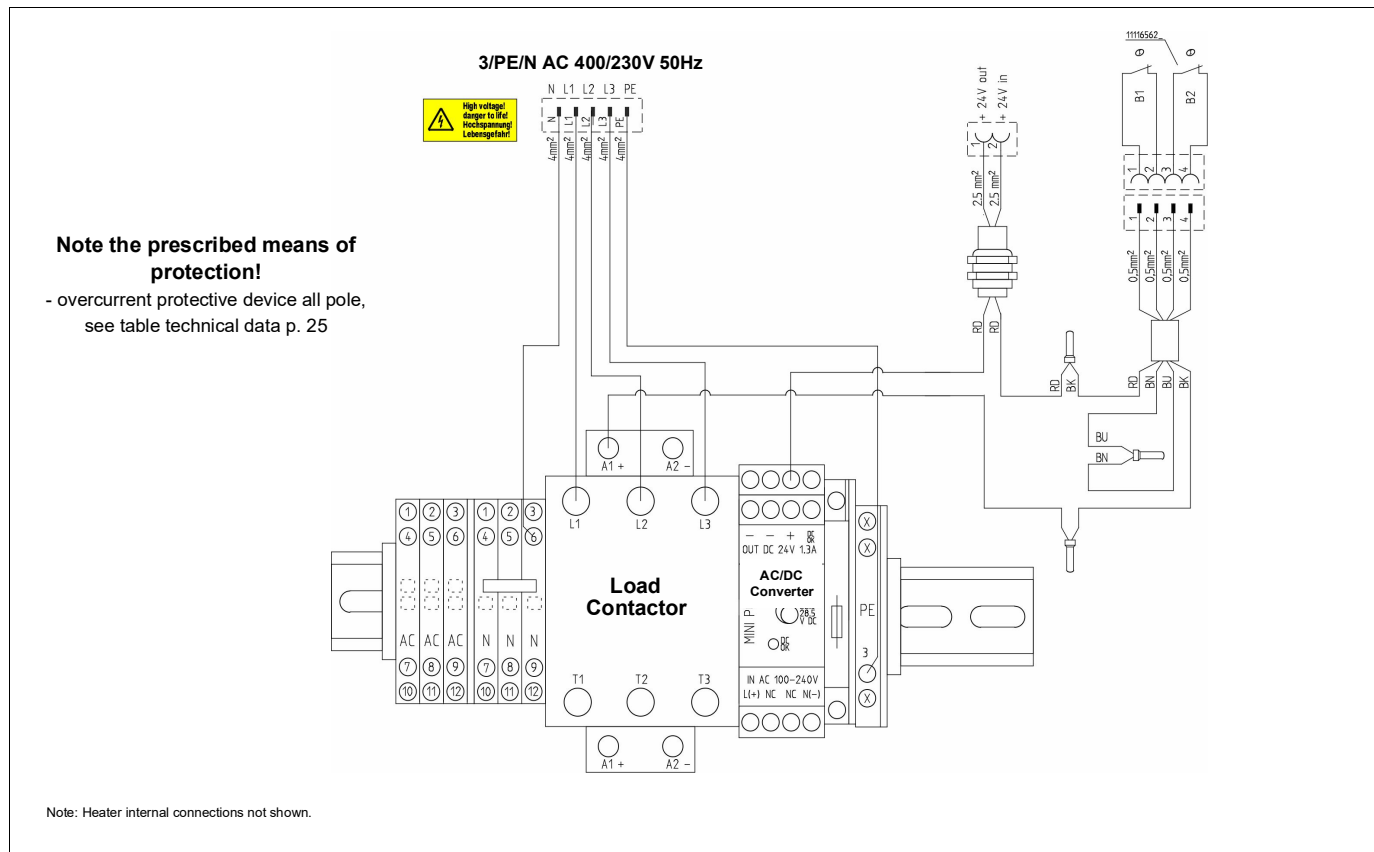
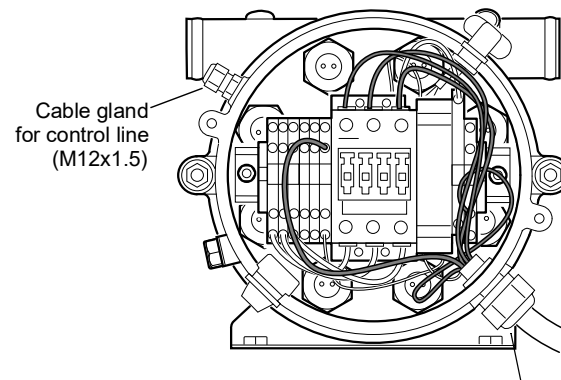


Figure 5: Hook-up plan Thermo AC 200 small distributor board

Specifications for connection:

	Earth conductor terminal, green/yellow (PE) and row terminal, blue (cable N)	Contactors connections
Stripping length	11 - 13 mm	
Kind of wire	single wire or wire strand or wire strand with ferrules	
Cable cross section	4 - 6 mm ²	
Torque	Use suitable tools for installation!	3 - 4.5 Nm

Cord grip range: 9 - 17 mm



The earth conductor must have such a length that it will tear off only after the other cables.

Cable gland for power cable (M25x1.5)

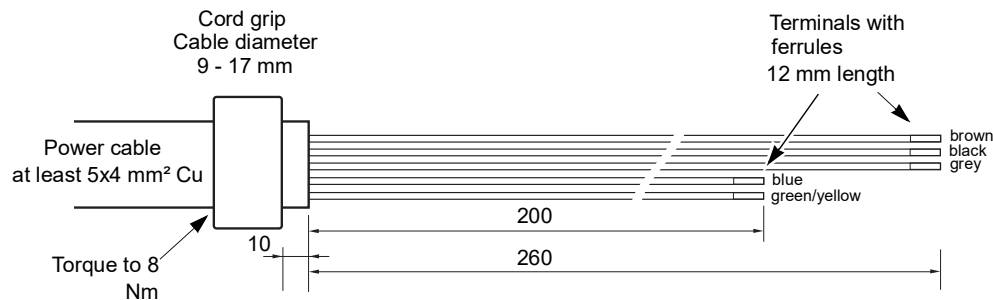


Figure 6: Preparation of the cables and hook-up (exemplary)

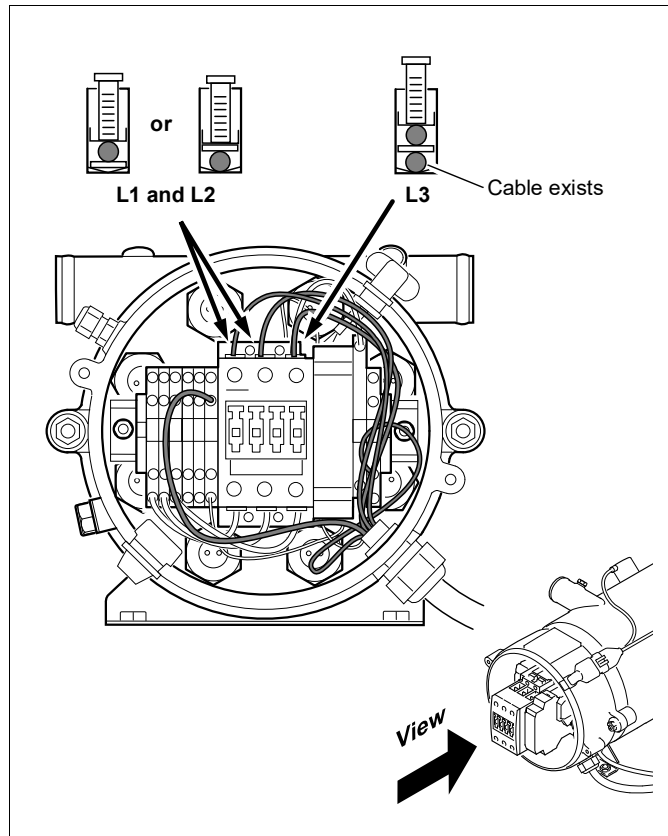


Figure 7: Terminals L1, L2 und L3 (exemplary)

5.3. Overcurrent Protection / fault current protection

ATTENTION:

The power supply circuit is to be protected through an all pole overcurrent protection device acc. to table Technical Tata on page 25.

If the overcurrent device has been triggered, the heater is to be switched off. It is essential that the cause is identified and the error rectified by a qualified electrician in a specialised workshop. Only then the heating appliance can be reconnected to the mains.

The use of overcurrent protection devices with another as specified load ability is not permitted and will result in loss of the operating approval!



Warning!

Risk of electric shock!

The heater must be protected on the vehicle side with all poles by a ground fault interrupter against fault currents.

The connecting schematic of the ground fault interrupter is shown in figure 8.

The specified for the fasteners torque value must be met.

5.4. External power supply hook up

ATTENTION:

It should be noted that with vehicles, which are to be connected to the earthed external power supply unit via the conductive connection, a device must be present by which the galvanic connection of the electrical earth with the ground can be made.

Before an external voltage is applied to the vehicle, the connection with the ground must be established by this device and must be able to be maintained until the external voltage is interrupted.

5.5. Testing the installation

After the installation is completed, the heating appliance is to be checked by a qualified electrician for operational safety and function!

Before the mains power is applied, close the appliance (fit the hood).

A current measurement per phase ensures that all cartridge heaters are functioning. For limits to be checked, refer to table Technical Data on page 25.

ATTENTION:

Under no circumstances may the heaters be operated 'dry' (without water-filling), because this results in damage!

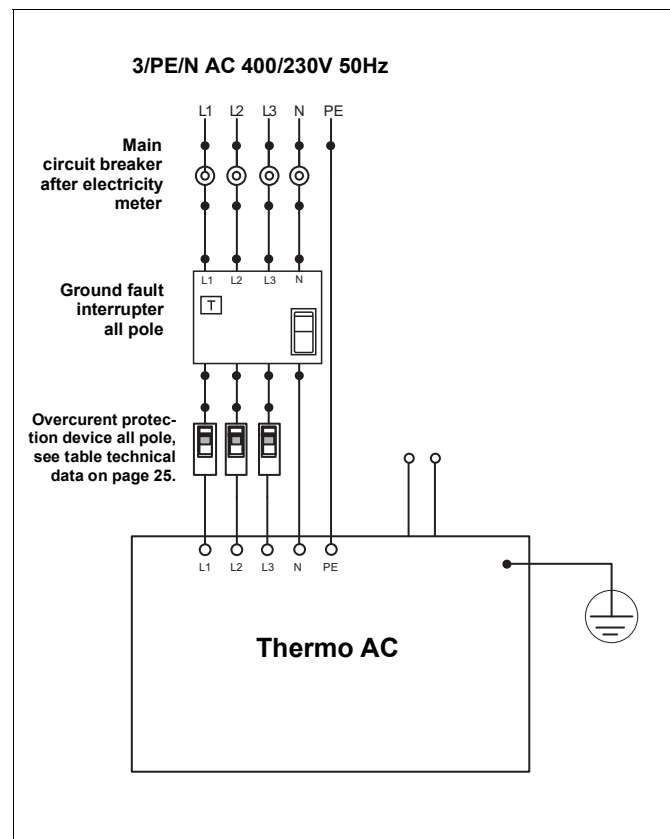


Figure 8: Connection schematic

6 Maintenance

 Warning!	Risk of electric shock!
---	--------------------------------

- Maintenance work on the electrical equipment may only be carried out by a qualified electrician.
- The appliance must be disconnected from the power supply prior to any maintenance work and in particular prior to repair work (see 2 Safety regulations).
- The heating appliance, and in particular the electrical control system, must be checked at least once a year according to DIN VDE 0701/0702 (VDE 0701/0702) or according to comparable test specifications. Independently of this the mandatory local regulations must be observed.
- Avoid cleaning with liquid media, as the insulation resistance can be reduced below the permitted limits by water that may ingress. Further information see Workshop Manual, available in the download center under www.spheros.com.
- Maintenance must be carried out in accordance with the current maintenance plan, available in the download center under www.spheros.com.

ATTENTION:

- Under no circumstances may the heaters be operated 'dry' to the air, since the internal construction will be damaged!
- Do not operate the cartridge heaters for a short period of time, even for checking purposes, since they can be permanently damaged or destroyed by this. Only carry out checks as instructed.

NOTE:

The connecting screws on the heating appliance may only be replaced with genuine original parts from Spheros.

A current measurement per phase ensures that all cartridge heaters are functioning. For limits to be checked, refer to table Technical Data on page 25.

7 Faults, troubleshooting, repairs

ATTENTION:

If a safety switch has been triggered, this should only be reset after a qualified person has determined the cause of the fault and eliminated the error.

 Warning!	Risk of electric shock!
---	-------------------------

The opening of the appliance, troubleshooting and repairs must only be carried out by a qualified electrician. In all cases the heating appliance must be disconnected from the mains.

Troubleshooting and repair must be done in accordance with the current Workshop Manual, at available in the download center under www.spheros.com.

NOTE:

Damaged or defective components should only be replaced with identical components.

ATTENTION:

The temperature switch is triggered at 125°C and interrupts the heating process. To reset you must activate the reset button. Prior to this the heating appliance must be checked for any possible damage or faults and the cause of the fault established and eliminated.

8 Control elements

The control line should be kept as short as possible so that the voltage drop is not too great. The minimum cable cross sections indicated in the table must be applied.

Cable length <7,5m	Cable length 7,5 - 15m
0.75 mm ²	1.5 mm ² *
2.5 mm ²	4.0 mm ² *

* The cable cross section is to be reduced in front of the heater to 0.75 respective 2.5 mm².

If greater lengths have to be bridged, a relay must be used to split the power circuits and limit the length.
For the PN of the connector at the heater and of the mating plug, refer to table Technical Data on page 25. Max. length: 10 meters and at least 2.5mm².

Kinds of control:

- Switch - para. 8.1
- Relay - para. 8.1, or via
- Pre-selection timer - para. 8.2

8.1. Switch or relay

When switching the heater with a switch or relay, these must be designed for a voltage range of 18-30V DC and a current carrying capacity of at least 1.5A.

Use preferably the Spheros switch: 2711011A, switch complete with

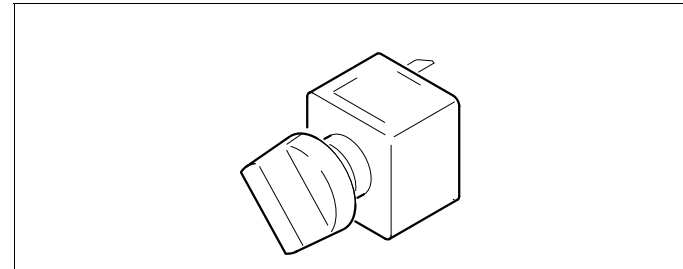


Bild 9: Spheros Switch

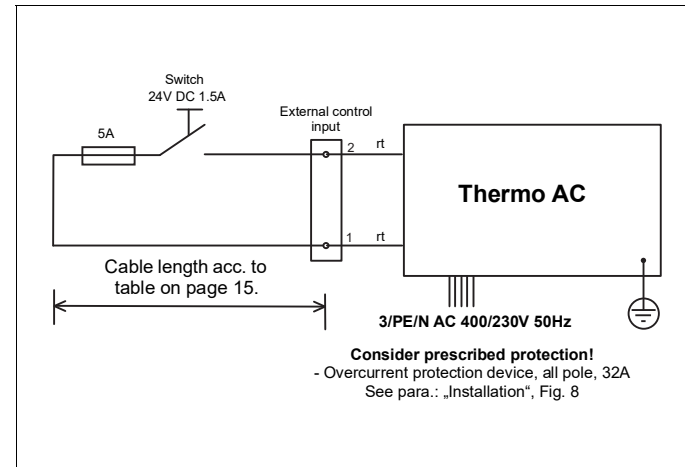


Bild 10: Wiring diagram with switch, 2-pole

8.2. Pre-selection timer

If the Spheros pre-selection timer is used as an operational element, a 24V vehicle relay (switching current >1.5A) with a current consumption smaller than 400mA must be used in accordance with the following circuit diagram.

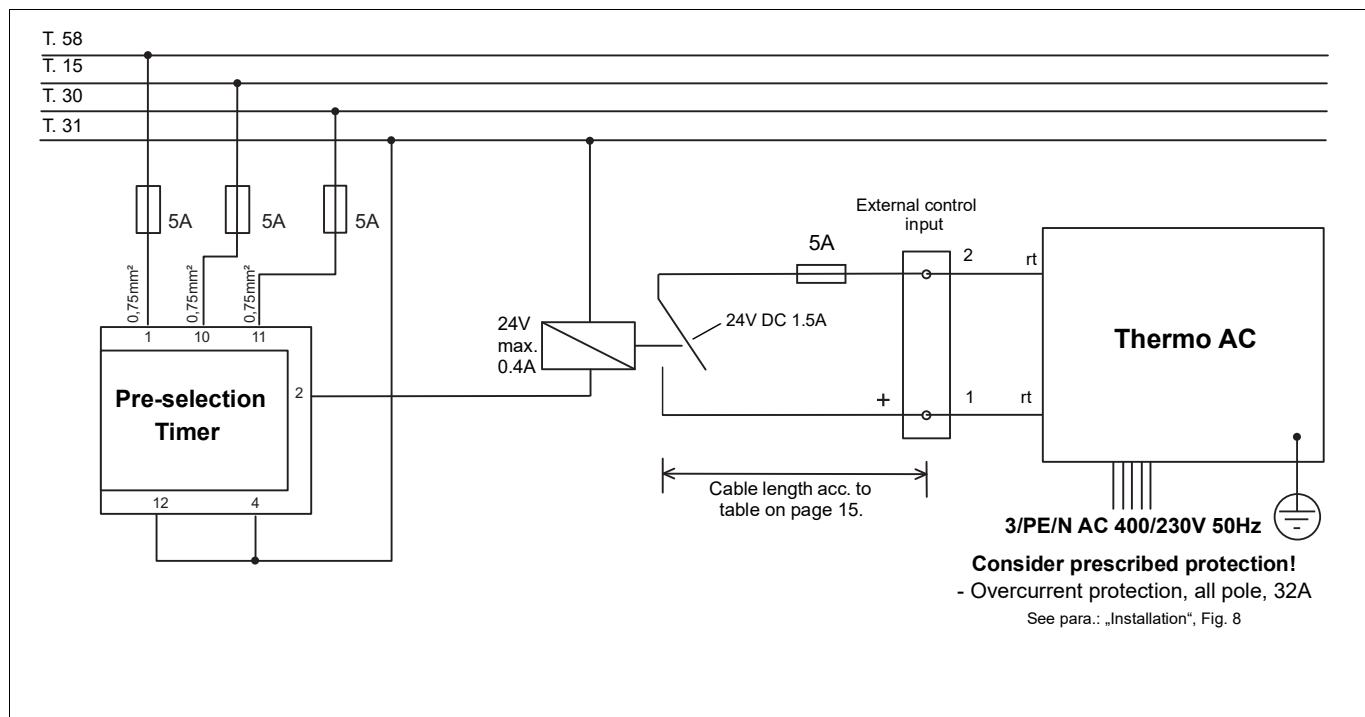


Bild 11: Wiring diagram with pre-selection timer, 2-pole

ATTENTION:

Never connect the timer directly to the heating appliance. This will damage the timer. You can use the following relay: ID: 98559A (Fa. Wehrle, 29 201 045).

NOTE:

All information on the Spheros pre-selection timer VC Preheater can be found on the Spheros website.

8.3. Operation indicator

For monitoring there should be an operation indicator provided at the vehicle, which shows the status of the switching signal/heating system.

When using a 2-pole external control (see fig. 10) the required operation indicator must be realized and controlled vehicle-mounted.

9 Circulation pump

ATTENTION:

For a correct startup of the heating appliance an adequate circulation of the cooling medium must be ensured before switching on.

The heating appliance is preferably to be equipped with Spheros circulation pumps.

NOTE:

For information about these circulating pumps and their installation, refer to the download center under www.spheros.com.



The water flow rate through the heat exchanger of the Thermo AC 070 must be more than 1,500 litres/hour. The system must be completely bled.

The triggering/activation of the circulation pump is not carried out by the heating appliance. For this reason the coolant demand must be provided for at the vehicle.

10 Switching thresholds

Upper switching threshold: 75°C

Lower switching threshold: 68°C

11 Installation of the heater - fitting of important assemblies

11.1. Installation

ATTENTION:

- The legal regulations for the installation are to be observed.
- If the operation of the water heating appliance is to be part of a separately installed heating system, an installation plan should be presented in all cases to Spheros for approval.
If this approval is not given, the installation is not permitted and all warranties and liability claims become void.
- Mechanical strain must not be applied to the cables of the temperature switches (e.g. by using them to carry the heating appliance).
- Heating appliances and circulation pumps must fundamentally be built in such that any damage through contamination from the track, water spray, exhausts and other damaging influences is excluded.
- The disassembly of the individual components (contactor, cartridge heaters) is not permitted and makes all warranty claims void.



The cooling water and the components of the cooling water circuit achieve high temperatures.

- Water-carrying parts are to be routed and fastened in such a manner that no temperature risk to humans, animals or material sensitive to temperature due to radiation / contact occurs.

- Before working on the cooling water circuit, switch off the heater and wait until all parts are cooled down, if necessary wear protective gloves.

NOTE:

The heaters are approved for horizontal installation only (see Figure 13).

The dimensions of the heating appliance, the permitted installation locations, and the hole pattern for the fastening can be found in figures 12 and 13.

Installation location

Attention should be paid to the particular location conditions of the specific vehicle type.

The heating appliance and the circulation pump are integrated into the cooling system (or into a separate heating circuit). The heating appliance should be installed as low as possible so that bleeding of the heating appliance and the circulation pump is automatically assured. This is particularly important since the circulation pump is not self-priming. If the heating appliance and the circulation pump can not be accommodated in the engine room of the vehicle, they can be installed in a sealed housing. This housing must be adequately ventilated from the outside, so that a maximum temperature of +85°C inside is not exceeded.

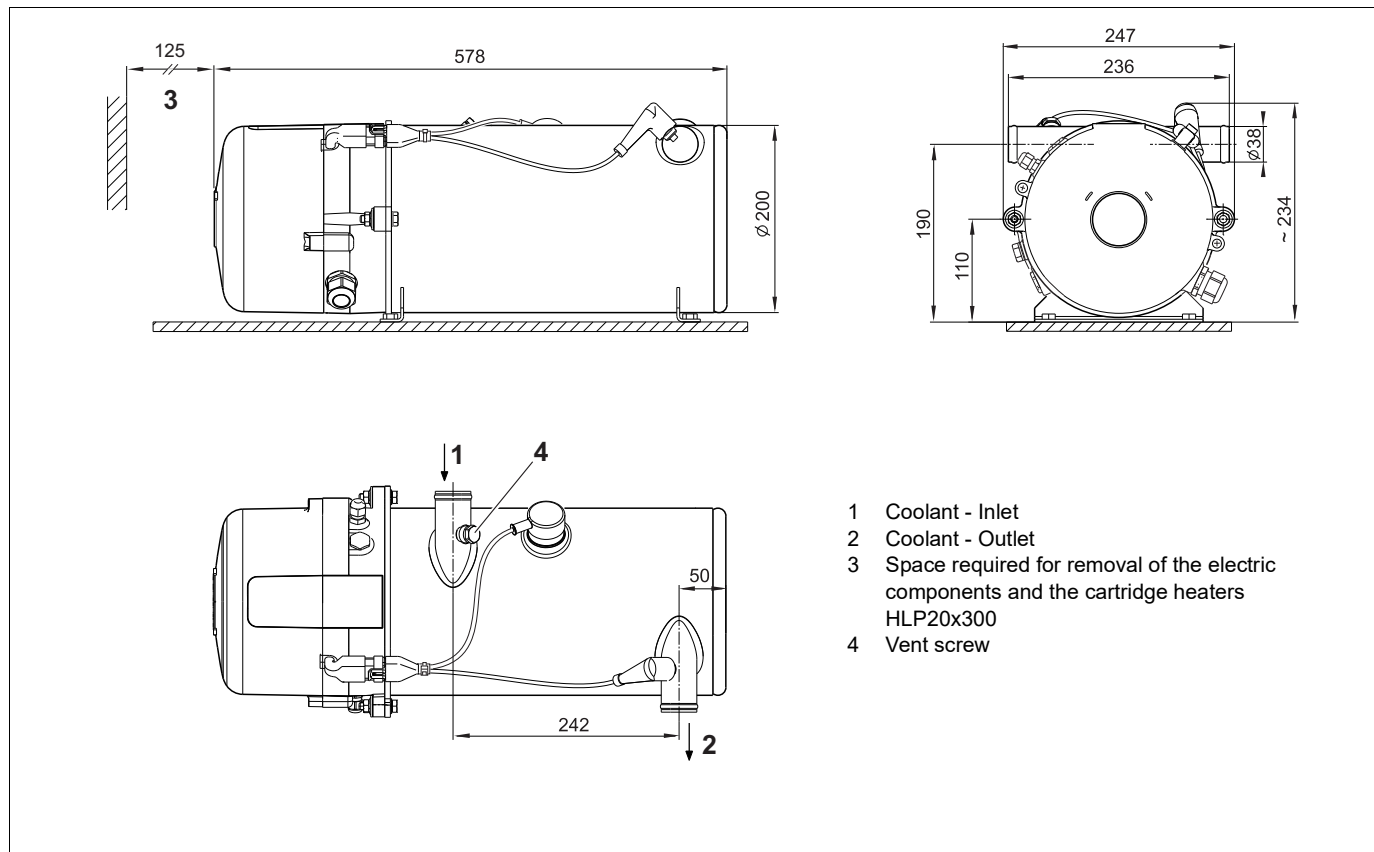


Figure 12: Dimensions of the heating appliance Thermo AC

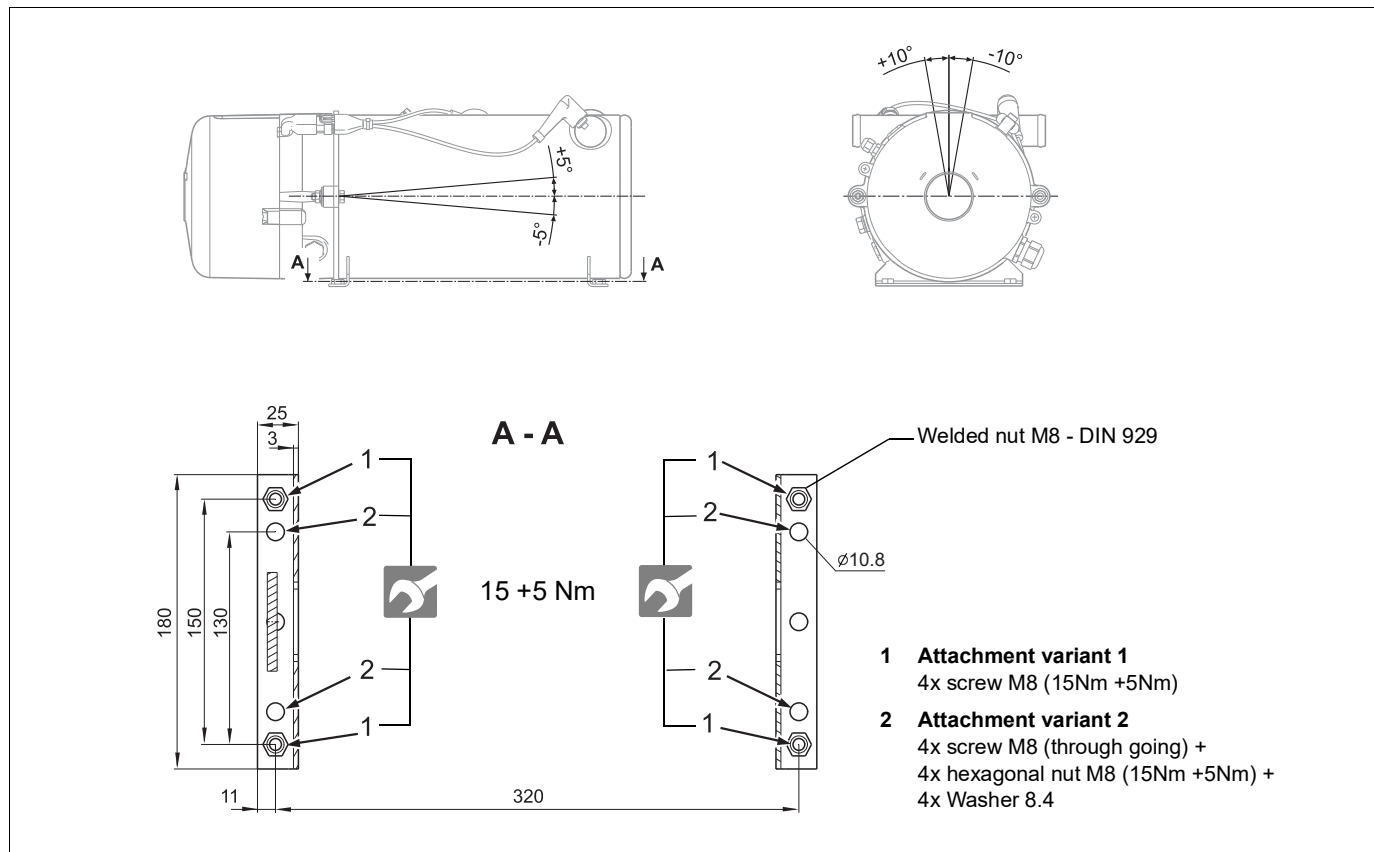


Figure 13: Installation position and hole pattern Thermo AC

11.2. Connection to the vehicle's cooling system

The heating appliance is connected to the vehicle's cooling system according to figure 12. The volume of coolant fluid present in the circuit must be at least 25 litres. The water in the heating circuit of the heating appliance must contain at least 30 to 60% of a branded antifreeze agent. An up-to-date list of Spheros recommended anti-freeze agents can be found on the Spheros website.

The water hoses approved for use with the appliance by Spheros must always be used. If this is not the case then the hoses must at least comply with DIN 73411. The hoses are to be laid without kinks and also rising where possible for the proper bleeding of the heating appliance. The heater must be mounted below the minimum water level of the cooling circuit. Hose connections are to be secured with hose clips against falling off.

When installing the electric heater the direction of the flow of the cooling water in the circuit is to be considered (see figure 12).

ATTENTION:

The specified tightening torques of the hose clamps used must be adhered.

In the vehicle cooling system, or in the case of a separate heating circuit, only overpressure valves with an opening pressure of maximum 2 bar should be used.

Attention should be paid to the **careful bleeding of the cooling system** without usage of the circulating pump, before the first commissioning of the heating appliance, or after the coolant fluid has been replaced.

For that the additional venting option via the vent screw item 4, figure 12 is to be used after the system has been filled and the pump has been switched on.

The heat exchanger and the water hoses of the Thermo AC should be pre-filled completely. Loosen the vent screw slightly until no air further

emerges, but only water. Then retighten the screw (tightening torque - see figure 14).

ATTENTION:

If air bubbles are present, they could cause destruction of the cartridge heaters!

The heating appliance and pipes must be installed in such a way that they ensure a static bleeding of the system.

The correct degree of bleeding results in an almost silently operating circulation pump. An inadequate bleeding can lead during heating operation to the switching-off of the heating appliance due to overheating.

Where the U 4855 / Aquavent 6000C circulation pump is used, the circulation pump is automatically switched off ca. 10 seconds after switching on, if the cooling agent is not present or there is blockage of the pump impeller, and it can be started up again after ca. 2 minutes.

Where the U 4856 / Aquavent 6000SC circulation pump is used, the circulation pump is automatically switched off ca. 45 seconds after switching on, if the cooling agent is not present or there is blockage of the pump impeller, and it can be started up again after ca. 2 minutes.

ATTENTION:

Before commissioning the heating system, the water hoses, the circulation pump and the heating appliance must be filled completely.

Only by Spheros recommended anti-freeze agents may be used.

11.3. Installation of the circulating pump

Consider the information regarding the installation provided in the documentation of your circulation pump. Note the installation position!

NOTE:

The pump ports and connection lines from the water intake and water outlet must be flush (no stress).

ATTENTION:

If the pump is not controlled by the heater, its operation is to be ensured by all means during whole heater operation (heating operation and purge cycle). At least turn on the Thermo AC and pump at the same time, but ensure the operation of the pump by an appropriate control circuit at least 2 to 3 min. after switching-off the heater.

11.4. Tightening torques

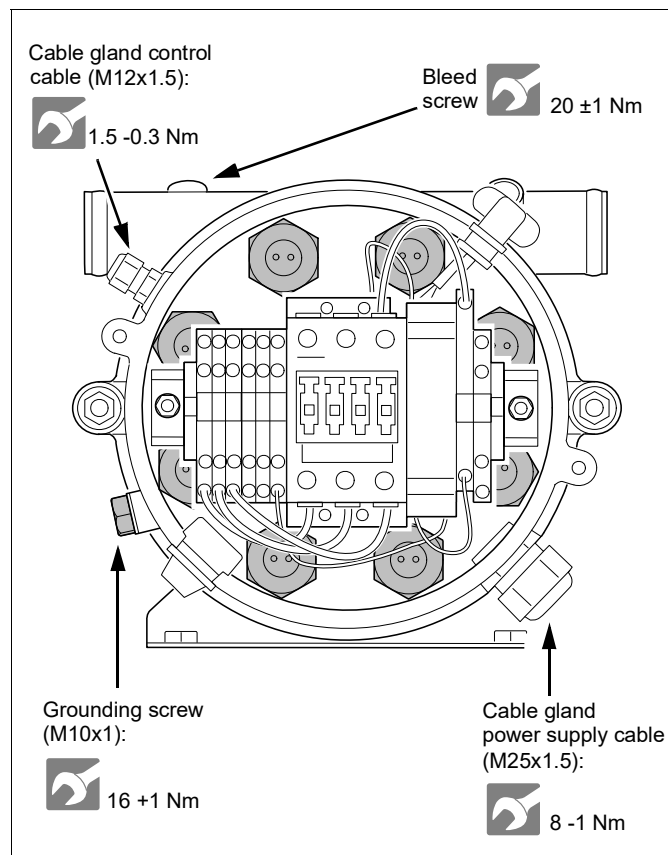


Figure 14: Tightening torques

12 Technical data

Unless limit values are given, the technical data below is understood to be subject to the usual tolerances for heating appliances of +/-10% at an ambient temperature of +20°C and at nominal voltage.

NOTE:

The allocation of the circulation pumps to the heating appliances must be carried out according to the upstream resistances and the minimum flow rate.

Heater	Thermo AC070	Thermo AC200
Kind of design	electrical operated heater	
Heater Ident. No.	11117427	11116255
Ambient temperature during operation °C	-40 ... +85	
Storage temperature °C	-40 ... +90	
Operating overpressure bar	max. 2.0	
Capacity of the heat exchanger l	9.9	9.4
Minimum water flow l/h	> 1500	
Minimum capacity of the water system l	25	
Antifreeze ratio in the cooling system %	30 up to 60	
Device dimensions (tolerance ± 3 mm) m	length: 578, wide: 247, height: approx. 225	
Weight kg	12.5	15
Max. operating altitude m	2,000	

Heater (electrical system)		Thermo AC 070	Thermo AC200
Nominal heating flow	kW	6.6	20
Nominal voltage	AC	3/PE/N AC 400/230V	
Power consumption	kW	6.6	20
Frequency	Hz	50 - 60	
Nominal current	A	10	30
Type of electrical protection		circuit breaker all pole 16A	circuit breaker all pole 32A
Circuit breaker rating	A	16	32
Min. cable cross section at vehicle side	m ²	5x4	
Insulation resistance new device at 1000V	MΩ	>100	
Insulation resistance end of life at 1000V	MΩ	>50	
Max. control current LV	A	0.55	
LV circuit breaker current rating	A	5	
LV control harness connector		FEP 42064500	
Mating connector		FEP 42121100	
Mating connector Spheros ID No.		11114939_	

memos



Spheros Germany GmbH
Friedrichshafener Str. 7 | 82205 Gilching | Germany | www.spheros.com