

**Klimaanlage**  
**Air conditioning system**

**Ersatzteil-Liste**  
**Spare parts list**

**Schienenfahrzeuge**  
**Rail vehicles**

**Alstom Coradia LINT DNU EN 45545**

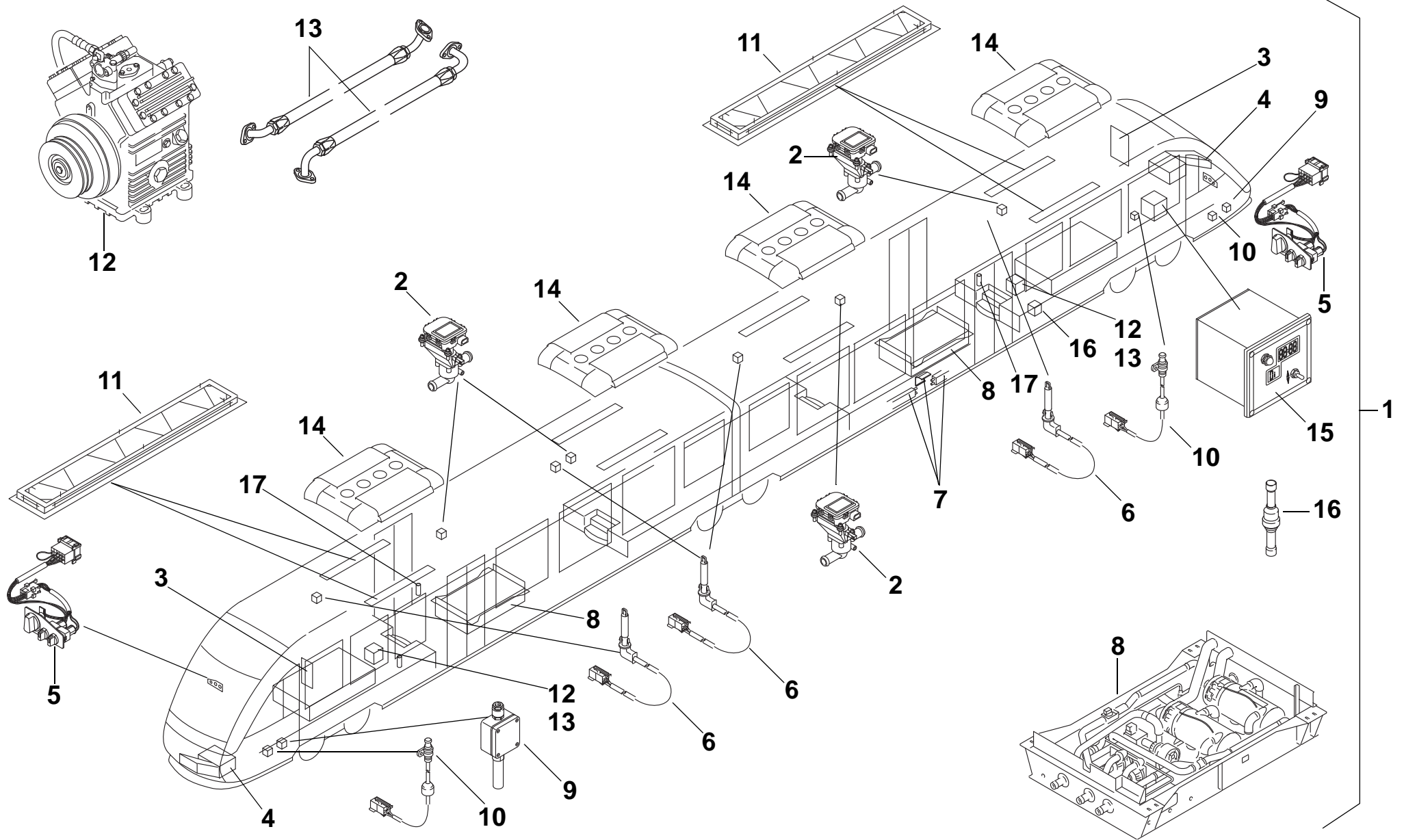
**für Fahrzeuge ab Bj. 2018**  
**mit Thermo plus Heizgeräten**  
**for rail vehicles built from 2018**  
**with Thermo plus heaters**

## Inhalt / content

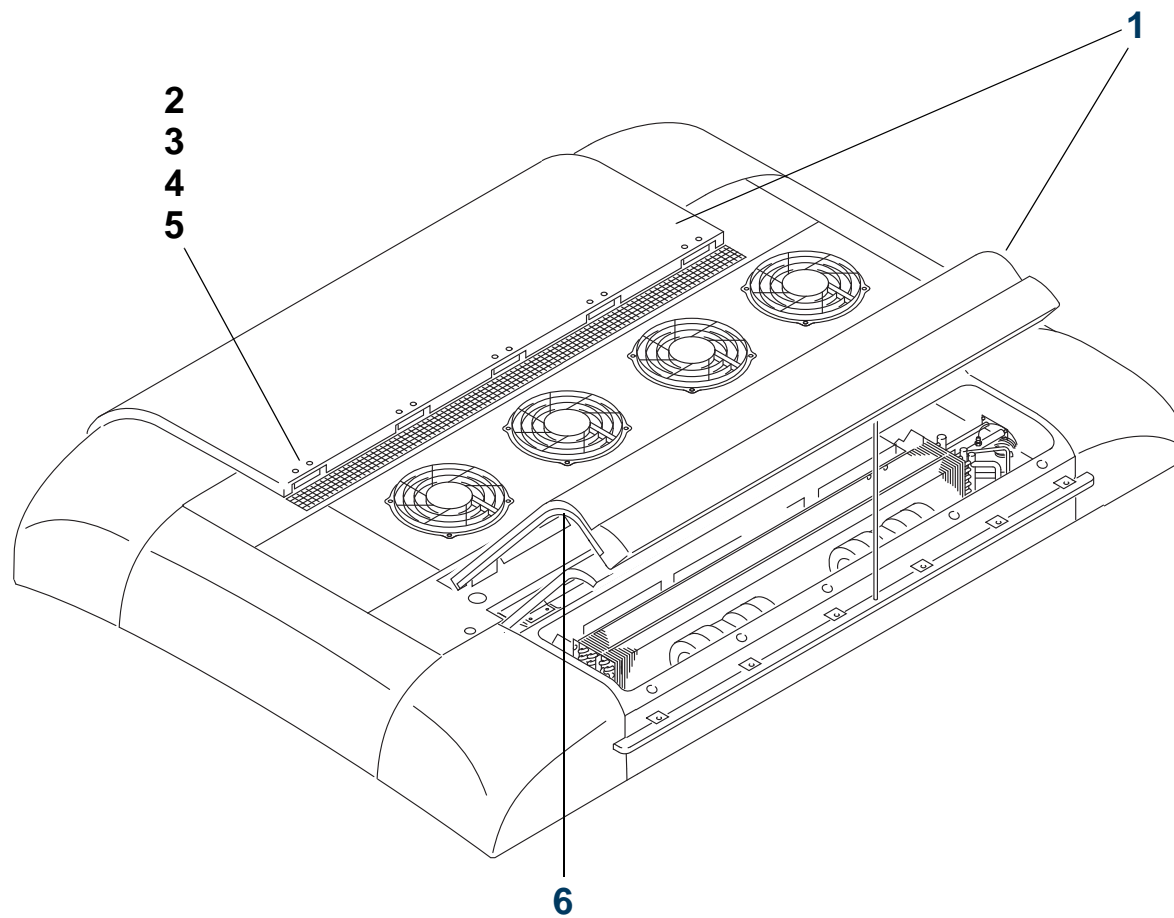
|   | <b>Bild / Fig.</b> | <b>Seite / Page</b> |
|---|--------------------|---------------------|
| <b>Baugruppenübersicht / list of components</b>                                 | <b>1</b>           | <b>3</b>            |
| <b>Klimaverflüssigereinheit / A/C condenser unit</b>                            | <b>2</b>           | <b>5</b>            |
| <b>Verflüssigereinheit / condenser unit</b>                                     | <b>3</b>           | <b>9</b>            |
| <b>Verrohrung / piping</b>  | <b>4</b>           | <b>11</b>           |
| <b>Verdampfereinheit ZSB</b>  | <b>5</b>           | <b>13</b>           |
| <b>Heizstation / heater unit</b>  | <b>6</b>           | <b>16</b>           |
| <b>Ventilblock / valve block</b>  | <b>7</b>           | <b>22</b>           |
| <b>Thermo plus 300</b>  | <b>8</b>           | <b>24</b>           |
| <b>Bugschrank / frontbox</b>  | <b>9</b>           | <b>32</b>           |
| <b>Bedienteil Bugschrank / operating element frontbox</b>                       | <b>10</b>          | <b>35</b>           |
| <b>Verdichtergruppe / compressor assy</b>                                       | <b>11</b>          | <b>37</b>           |
| <b>Schlauchsatz / hose kit</b>  | <b>12</b>          | <b>39</b>           |
| <b>Umluftfilter / air circulation filter</b>                                    | <b>13</b>          | <b>41</b>           |
| <b>Motorregelventil / motor control valve</b>                                   | <b>14</b>          | <b>43</b>           |
| <b>Fühler / sensor</b>  | <b>15</b>          | <b>45</b>           |
| <b>Elektrik / electrical system</b>   | <b>16</b>          | <b>47</b>           |
| <b>Konvektoren und Blenden / convector heaters and screens - LINT 54 NF DNU</b> | <b>17</b>          | <b>49</b>           |
| <b>Konvektoren und Blenden / convector heaters and screens - LINT 41 NF DNU</b> | <b>18</b>          | <b>53</b>           |

Hinweis: Nach rechts eingerückte Teile bzw. Untergruppen (durch Punkte markiert) sind in den um einen Punkt weniger eingerückten Baugruppen enthalten.  
Note: Sub-assemblies or components (marked by a point) - offset to the right - are contained in the assembly which is offset one point less.

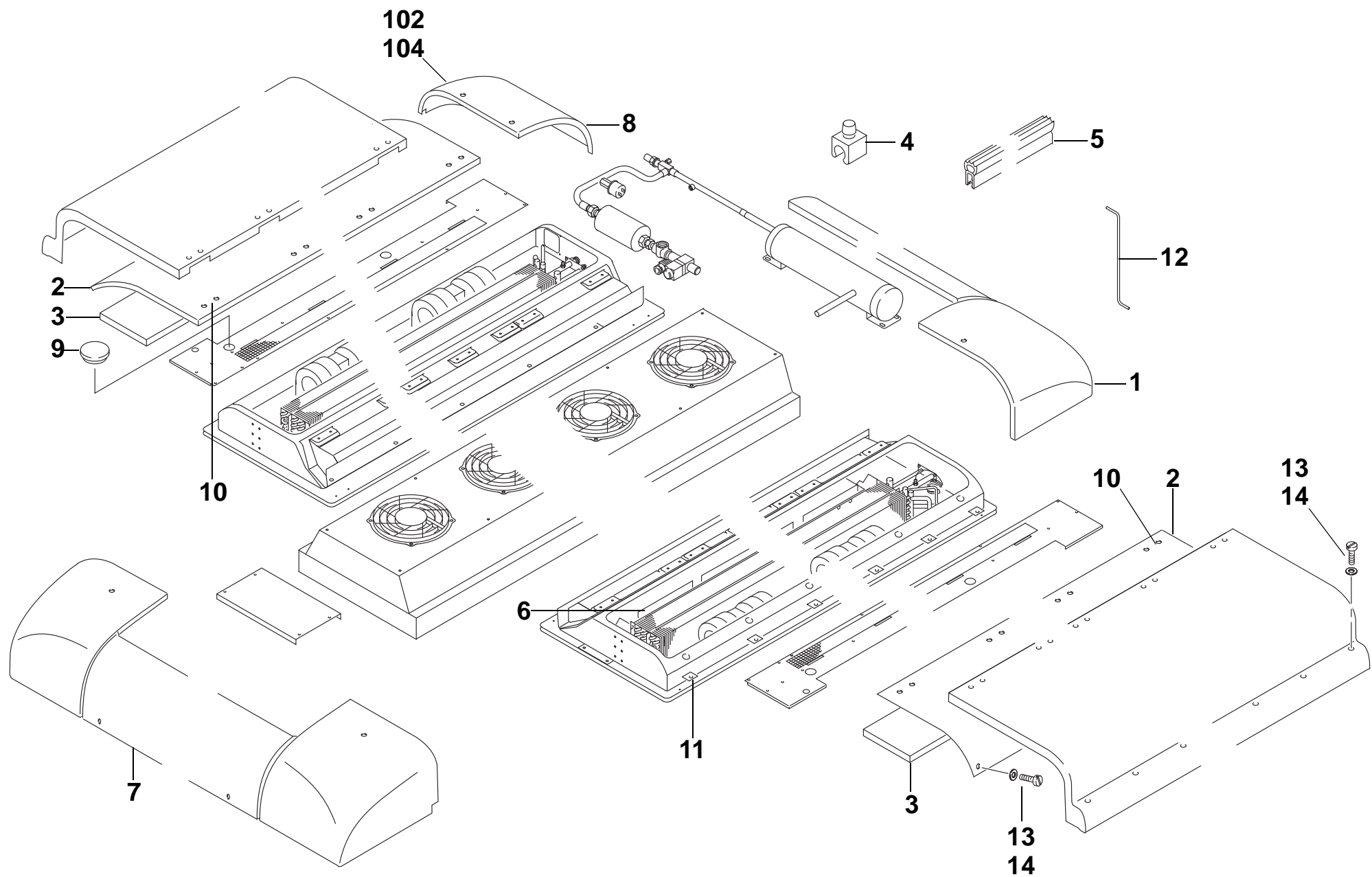
Änderungen vorbehalten. Im Fall einer mehrsprachigen Version ist Deutsch verbindlich. Die aktuelle Fassung dieser Ersatzteilliste steht unter [www.valeo-thermalbus.com](http://www.valeo-thermalbus.com) zum Download bereit. / Subject to modification.  
In multilingual versions the German language is binding. Latest version of this spare parts list is provided for download on [www.valeo-thermalbus.com](http://www.valeo-thermalbus.com).



| Pos.                                  | Stück<br>Quantity | Bestell-Nr.<br>Part no. | Benennung                           | Description                        | Abmessungen / Normteil<br>dimensions / standard part | Variante / Bemerkungen<br>version / remarks |
|---------------------------------------|-------------------|-------------------------|-------------------------------------|------------------------------------|--|---|
| <b>LU HKL-System LINT 41; LINT 54</b> |                   |                         |                                     |                                    |  |   |
| 1                                     | REF               |                         | LU HKL-System LINT 41; LINT 54      | LU HKL-System LINT 41; LINT 54     |  |   |
| 2                                     | 2                 |                         | • 3/2-wege-Motorregelventil         | two-way motor control valve        |  | siehe / see fig. 10                         |
| 3                                     | 1                 |                         | • Elektrik                          | electrical system                  |  | siehe / see fig. 16                         |
| 4                                     | 2                 |                         | • Bugschrank ZSB                    | frontbox assy                      |  | siehe / see fig. 9                          |
| 5                                     | 2                 |                         | • Bedienteil                        | operating element                  |  | siehe / see fig. 10                         |
| 6                                     | 4                 |                         | • Temperatursensor                  | temperature sensor                 | 200 lg.  | siehe / see fig. 15                         |
| 7                                     | 1                 |                         | • Konvektoren und Blenden LINT      | convector heaters and screens LINT |  | siehe / see fig. 17                         |
| 8                                     | 2                 |                         | • LU Heizstation                    | heater unit                        |  | siehe / see fig. 6                          |
| 9                                     | 2                 |                         | • Aussentemperaturfühler            | outside temperature sensor         |  | siehe / see fig. 15                         |
| 10                                    | 2                 |                         | • Temperatursensor außen            | outside temperature sensor         |  | siehe / see fig. 15                         |
| 11                                    | 8                 |                         | • Umluftfilter ZSB                  | air circulation filter assy        |  | siehe / see fig. 13                         |
| 12                                    | 2                 |                         | • Verdichtergruppe                  | compressor assy                    |  | siehe / see fig. 11                         |
| 13                                    | 2                 |                         | • Schlauchsatz Motorraum            | hose kit engine bay                |  | siehe / see fig. 12                         |
| 14                                    | 4                 |                         | • Klimaverflüssigereinheit m. Haube | A/C condenser unit with hood       |  | siehe / see fig. 2                          |
| 15                                    | 1                 |                         | • Vorwahuhr AST                     | digital timer AST                  |  |   |
| 16                                    | 3                 | 1100401B                | • Rückschlagventil                  | check valve                        |  |   |



| Pos.   | Stück<br>Quantity | Bestell-Nr.<br>Part no. | Benennung                         | Description                    | Abmessungen / Normteil<br>dimensions / standard part | Variante / Bemerkungen<br>version / remarks |
|--|-------------------|-------------------------|-----------------------------------|--------------------------------|--|---|
| <b>Klimaverflüssigereinheit / A/C condenser unit</b> |                   |                         |                                   |                                |  |   |
| 0  | REF               |                         | Klimaverflüssigereinheit m. Haube | A/C condenser unit with hood   |  | siehe / see fig. 1-14 / 1-38                |
| 1  | 2                 | 11139739A               | Überhaube, vormontiert            | outer hood assy, pre-assembled |  | EN 45545                                    |
| 2  | 10                | 1103580A                | Haubenscharnier                   | hood hinge                     |  |   |
| 3  | 4                 | 11115563A               | • Schraube                        | Screw                          |  |   |
| 4  | 4                 | 63571A                  | • Scheibe                         | washer                         |  |   |
| 5  | 4                 | 90296C                  | • Steckkäfigmutter                | snap-in cage nut               |  |   |
| 6  | 4                 | 11139599B               | Dichtprofil                       | seal                           |  |   |

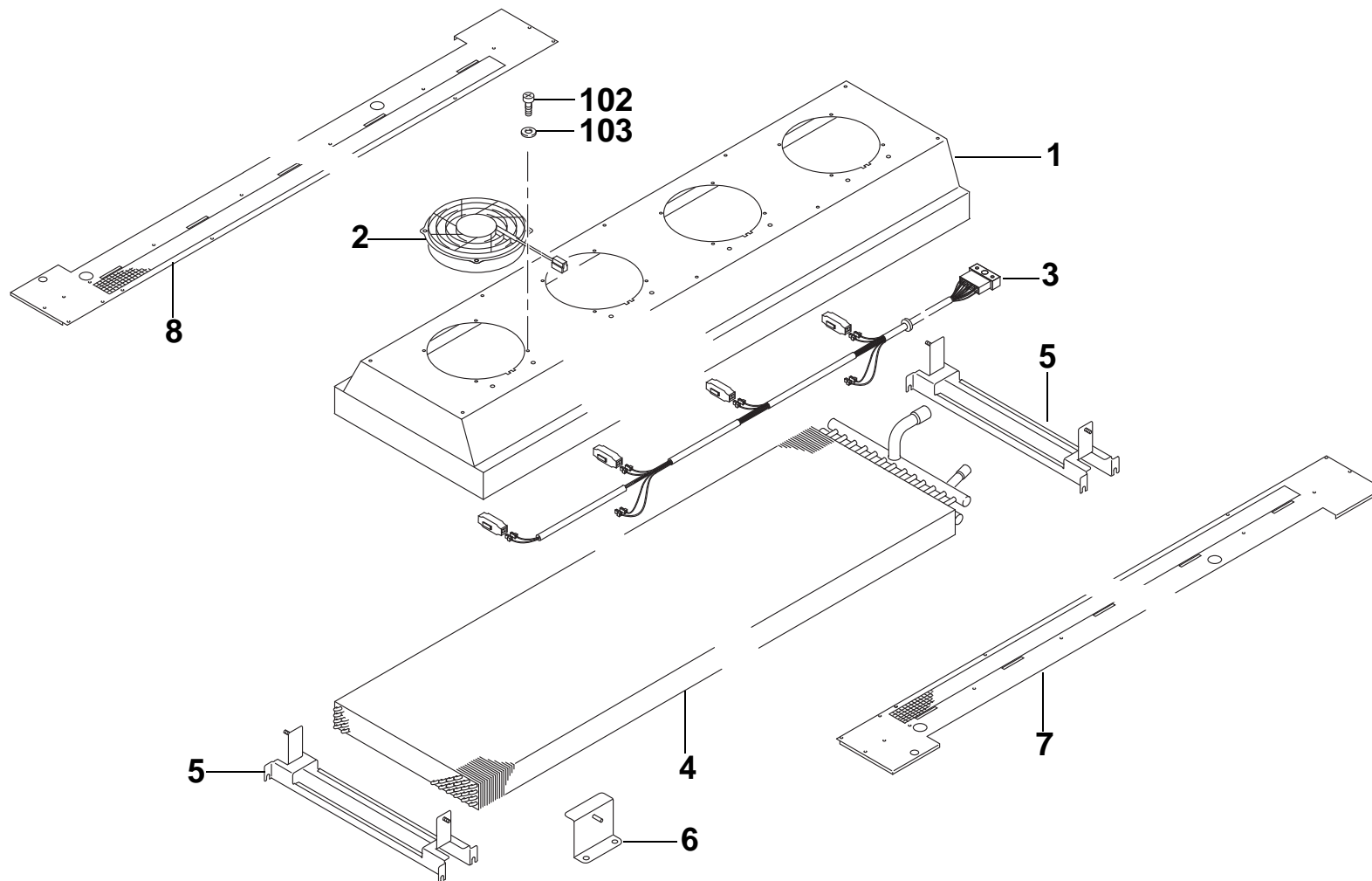


| Pos.   | Stück<br>Quantity | Bestell-Nr.<br>Part no. | Benennung                        | Description              | Abmessungen / Normteil<br>dimensions / standard part | Variante / Bemerkungen<br>version / remarks   |
|--|-------------------|-------------------------|----------------------------------|--------------------------|--|---|
| <b>Klimaverflüssigereinheit / A/C condenser unit</b> |                   |                         |                                  |                          |  |   |
| 1  | 1                 | 11139547B               | Abdeckung, ZSB, hinten links     | cover assy, rear, LH     |  | EN 45545  |
| 2  | 2                 | 11139543B               | Seitendeckel, kurz, rechts/links | side cover, short, RH/LH |  | EN 45545  |
| 3  | 2                 | 11139596A               | Schalldämmmatte                  | sound deadening mat      |  | EN 45545, 1410x160x15mm   |
| 4  | 4                 | 92688A                  | Kabelschelle                     | cable clamp              |  |   |
| 5  | 2,4m              | 11139601B               | Kantenschutz-Dichtprofil         | edge protector           |  | EN 45545, Meterware / per meter   |
| 6  | 6                 | 11139653A               | Frischlufffilter, kurz           | fresh air filter, short  |  | EN 45545  |
| 7  | 1                 | 11139546B               | Abdeckung, vorn                  | cover, front             |  | EN 45545  |
| 8  | 1                 | 11139545B               | Servicedeckel                    | service cover            |  |   |
| 9  | 4                 | 68178A                  | Verschlusskappe                  | plug cap                 |  |   |
| 10   | 8                 | 1101925A                | Haubenscharnier                  | hood hinge               |  | inkl. 4 Schrauben, 4 Scheiben und<br>2 Klemmmuttern /<br>incl. 4 screws, 4 washers and 2<br>clip nuts |
| 11   | 12                | 80038B                  | Klemmmutter M6                   | clip nut                 |  |   |
| 12   | 2                 | 68129A                  | Haubenstütze, kurz               | cover support, short     |  |   |
| 13   | x                 | 68579B                  | Flachkopfschraube                | flat head screw          |  |   |
| 14   | x                 | 68557A                  | Scheibe                          | washer                   |  |   |

x - Stückzahl nach Bedarf / Quantity as required

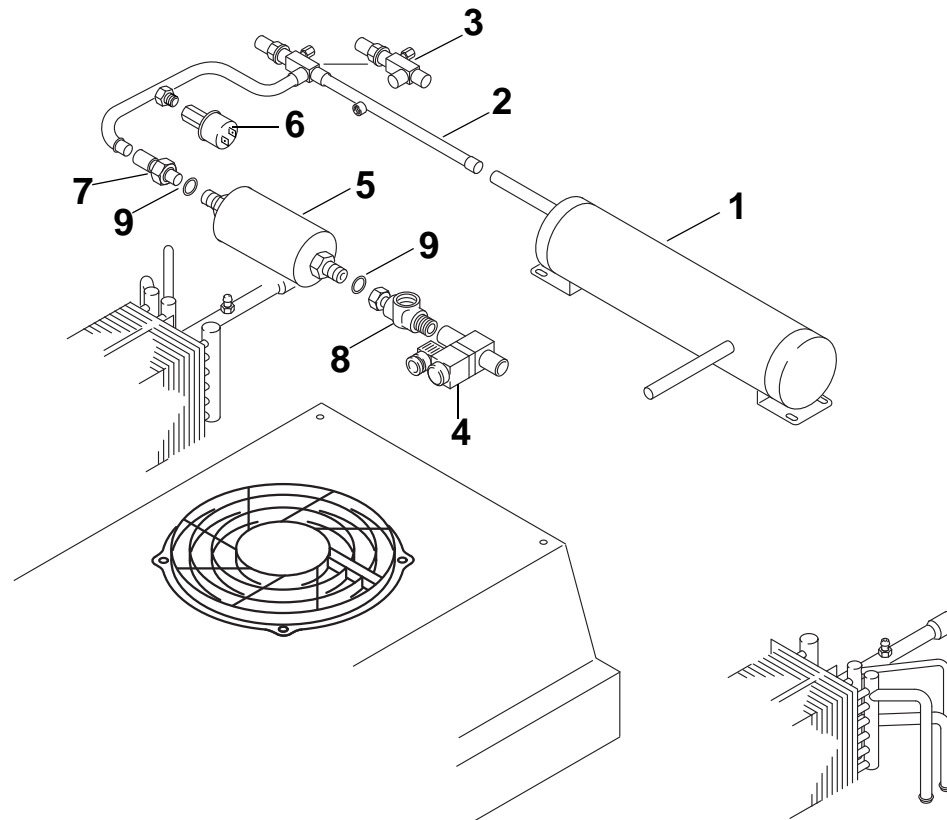


### 3 - Verflüssigereinheit



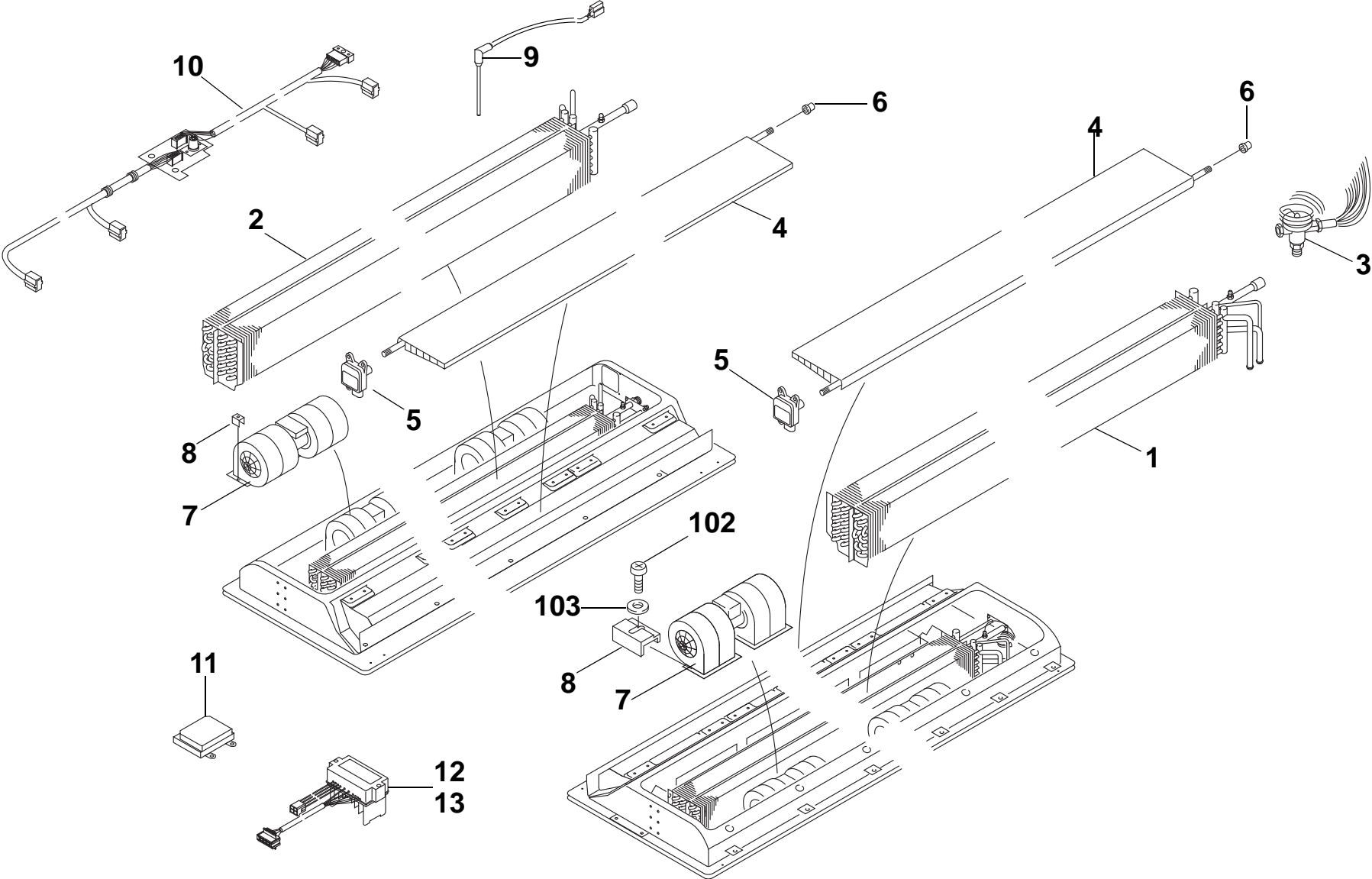
| Pos.  | Stück<br>Quantity | Bestell-Nr.<br>Part no. | Benennung                       | Description                   | Abmessungen / Normteil<br>dimensions / standard part | Variante / Bemerkungen<br>version / remarks |
|---|-------------------|-------------------------|---------------------------------|-------------------------------|--|---|
| <b>Verflüssigereinheit / condenser unit</b> |                   |                         |                                 |                               |  |   |
| 1   | 1                 | 1101238C                | Verflüssigerabdeckung, kpl.     | condenser cover complete      |  |   |
| 2   | 4                 | 11125937A               | Axialgebläse                    | axial fan                     |  | EN 45545                                    |
| 3   | 1                 | 11139650A               | Kabelbaum, Verflüssiger         | wiring harness, condenser     |  | EN 45545                                    |
| 4   | 1                 | 1102500A                | Verflüssiger                    | condenser                     |  |   |
| 5   | 2                 | 1101723B                | Trageeinheit                    | supporting unit               |  |   |
| 6   | 8                 | 11116427A               | Halter, Abdeckung, Verflüssiger | support, cover, condenser     |  |   |
| 7   | 1                 | 11115956A               | Laubgitter, Alstom, links       | protective grille, Alstom, LH |  |   |
| 8   | 1                 | 11115957A               | Laubgitter, Alstom, rechts      | protective grille, Alstom, RH |  |   |

#### 4 - Verrohrung / Piping



| Pos.                       | Stück<br>Quantity | Bestell-Nr.<br>Part no. | Benennung                   | Description                   | Abmessungen / Normteil<br>dimensions / standard part | Variante / Bemerkungen<br>version / remarks |
|----------------------------|-------------------|-------------------------|-----------------------------|-------------------------------|--|---|
| <b>Verrohrung / piping</b> |                   |                         |                             |                               |  |   |
| 1                          | 1                 | 1102499A                | Kältemittelsammler          | refrigerant collector         |  |   |
| 2                          | 1                 | 1101962A                | Leitung, Sammler - Trockner | line, receiver - filter drier |  |   |
| 3                          | 1                 | 1102081B                | Eckabsperrventil            | shut-off valve, angle-type    |  |   |
| 4                          | 1                 | 93510B                  | Magnetventil, Kältemittel   | solenoid valve, refrigerant   |  |   |
| 5                          | 1                 | 11115177A               | Filtertrockner              | filter drier                  |  | mit O-Ring/with O-ring 7/8 UNF              |
| 6                          | 1                 | 92931B                  | Druckschalter               | pressure switch               |  |   |
| 7                          | 1                 |                         | Lötstück                    | soldered piece                |  |   |
| 8                          | 1                 | 1103154A                | Lötschauglas                | sight glass                   |  | für Rohr 16x1 / for tube 16x1               |
| 9                          | 2                 | 80641A                  | • O-Ring                    | O-ring                        |  |   |

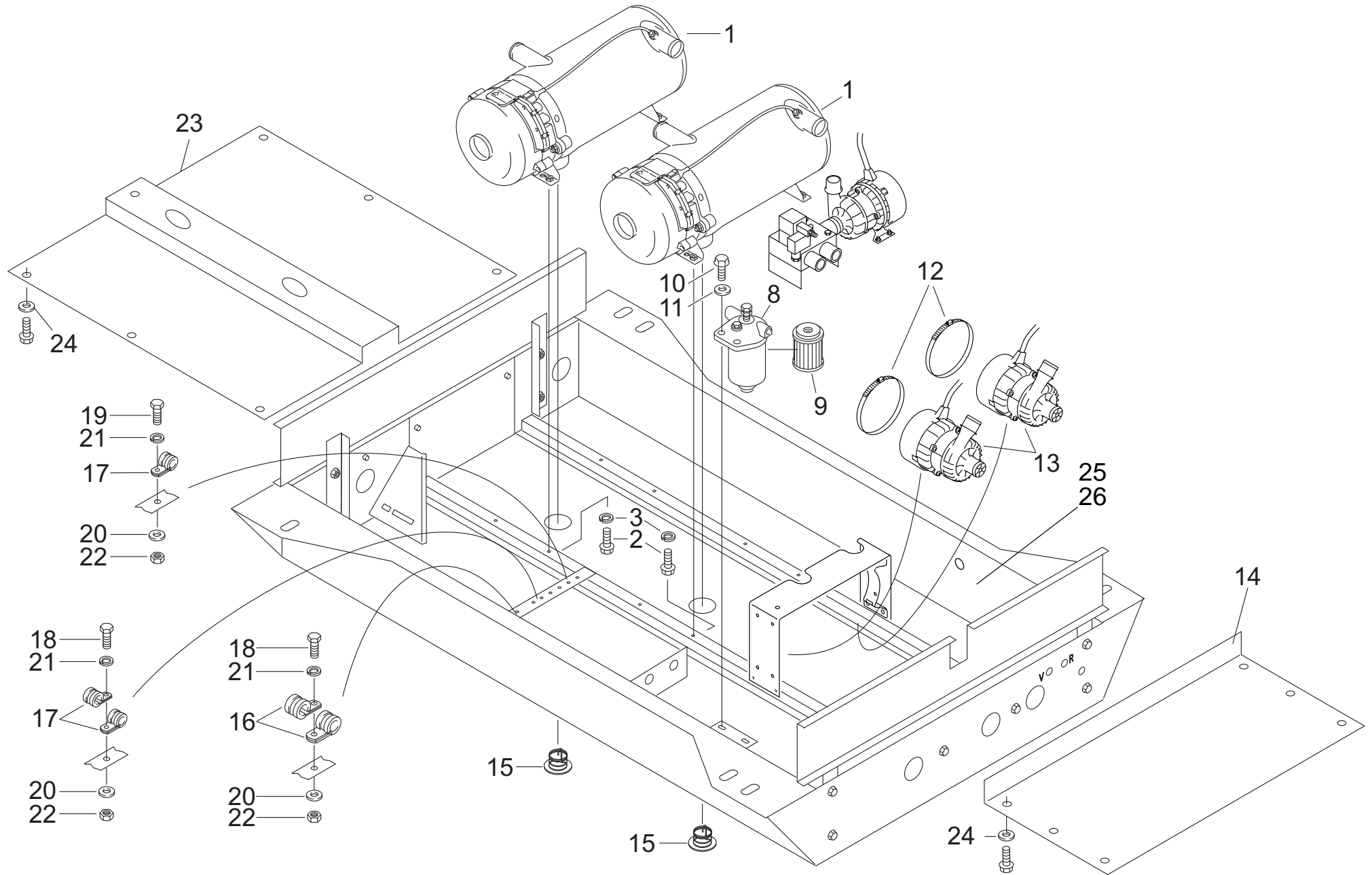
5 - Verdampferereinheit ZSB



| Pos.   | Stück<br>Quantity | Bestell-Nr.<br>Part no. | Benennung              | Description                | Abmessungen / Normteil<br>dimensions / standard part | Variante / Bemerkungen<br>version / remarks |
|--|-------------------|-------------------------|------------------------|----------------------------|--|---|
| <b>Verdampfeinheit ZSB / evaporator unit</b> |                   |                         |                        |                            |  |   |
| 1  | 1                 | 1103133B                | Verdampfer, links      | evaporator, LH             |  | ca. 1380mm                                  |
| 2  | 1                 | 1101141E                | Verdampfer, rechts     | evaporator, RH             |  | ca. 1380mm                                  |
| 3  | 2                 | 1102591A                | Expansionsventil       | expansion vlave            |  | TBEX4,5IE0603                               |
| 4  | 2                 | 11139620A               | Klappe, ZSB            | flap assy                  |  |   |
| 5  | 2                 | 1104166C                | Stellmotor             | actuating motor            |  | VMC 1                                       |
| 6  | 2                 | 92609A                  | Klappenlager           | flap bearing               |  |   |
| 7  | 4                 | 11125936A               | EC-Doppelradialgebläse | EC-dual radial fan         |  | EN 45545                                    |
| 8  | 12                | 1102026C                | Spannklammer           | clamp                      |  |   |
| 9  | 1                 | 83186A                  | Eissensor              | ice sensor                 |  |   |
| 10   | 1                 | 11139629A               | Kabelbaum, Verdampfer  | wiring harness, evaporator |  | EN 45545                                    |
| 11   | 1                 | 68012B                  | Unterstation           | control sub-unit           |  |   |
| 12   | 1                 | 1100733C                | Anlaufmodul            | starting module            |  | PWM-3 2GB                                   |
| 13   | 1                 | 1100515C                | Anlaufmodul            | starting module            |  | PWM-3                                       |

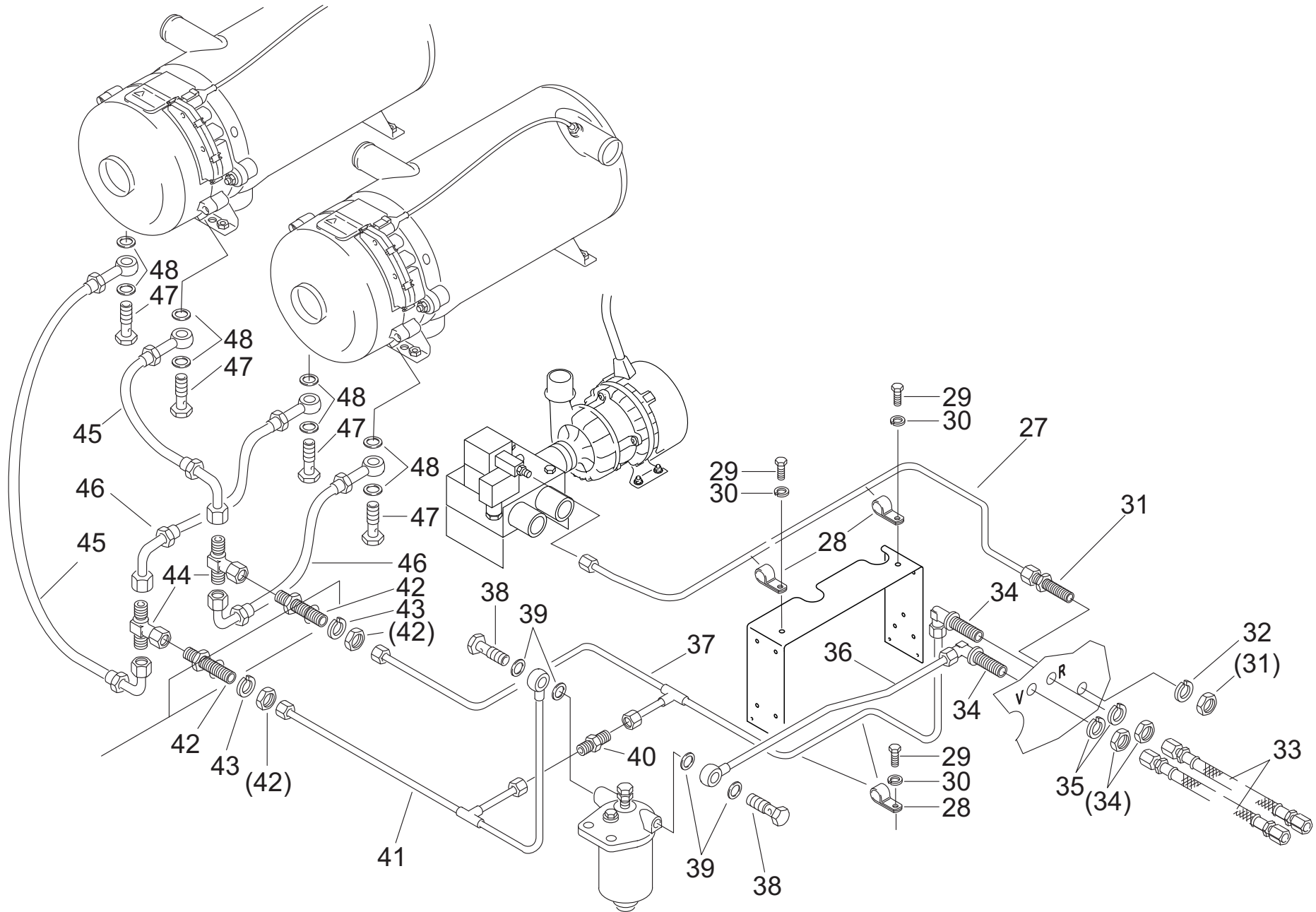
| Pos.                              | Stück<br>Quantity | Bestell-Nr.<br>Part no. | Benennung          | Description     | Abmessungen / Normteil<br>dimensions / standard part | Variante / Bemerkungen<br>version / remarks |
|-----------------------------------|-------------------|-------------------------|--------------------|-----------------|--|---|
| <b>Normteile / standard parts</b> |                   |                         |                    |                 |  |   |
| 101                               | 13                | 68579A                  | Flachkopfschraube  | flat head screw |  | DIN 921, M6x20 8.8                          |
| 102                               | x                 | 1102134B                | Sicherungsschraube | locking screw   |  | M6x20 8.8 SW10                              |
| 103                               | x                 | 63571A                  | Scheibe            | washer          |  | DIN 9021 B 6.4 St                           |
| 104                               | x                 | 15355B                  | Scheibe            | washer          |  | ISO 7093 B 6.4                              |

x - Stückzahl nach Bedarf / Quantity as required

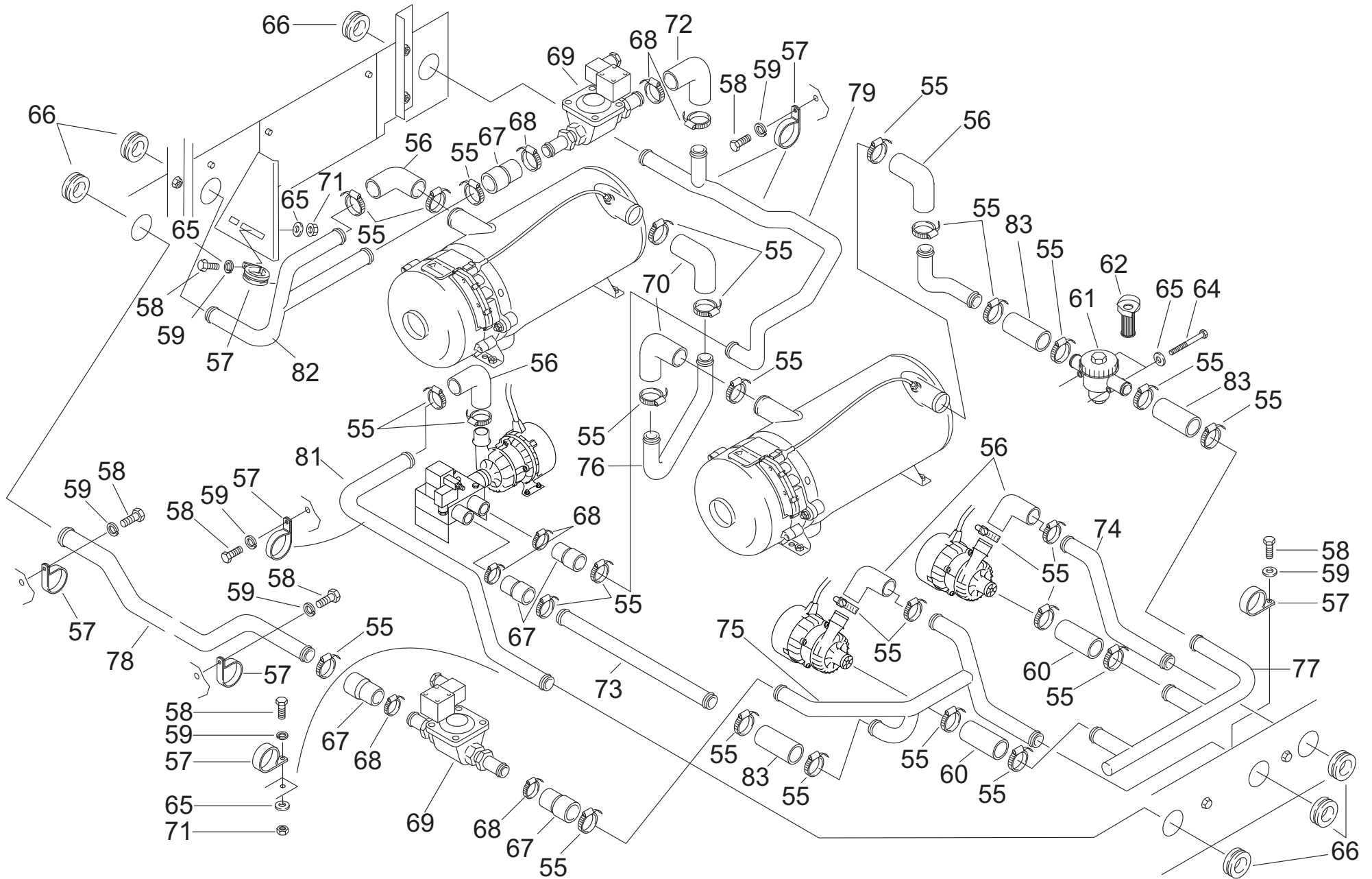




| Pos.                             | Stück<br>Quantity | Bestell-Nr.<br>Part no. | Benennung                   | Description                 | Abmessungen / Normteil<br>dimensions / standard part | Variante / Bemerkungen<br>version / remarks                    |
|----------------------------------|-------------------|-------------------------|-----------------------------|-----------------------------|--|--|
| <b>Heizstation / heater unit</b> |                   |                         |                             |                             |  |  |
| 0                                | REF               |                         | LU Heizstation              | heater unit                 |  | siehe / see fig. 1-9 / 1-33                                    |
| 1                                | 2                 | 11139278A               | • Hg Thermo plus 300.020B   | heater Thermo plus 300.020B |  | 24 V<br>siehe / see fig. 10                                    |
| 2                                | 8                 | 63568A                  | • Sechskantschraube         | hexagon screw               | DIN 933-M8x16A2-70                                   |  |
| 3                                | 8                 | 63574A                  | • Federring                 | lock washer                 | DIN 128-A8-A2  |  |
| 4-7                              |                   |                         |                             |                             |  |  |
| 8                                | 1                 | 93075A                  | • Brennstofffilter LHB      | fuel filter                 |  |  |
| 9                                | 1                 | 64878A                  | • Brennstofffiltereinsatz   | fuel filter insert          |  | o-ring pos 9a mitbestellen;<br>o-ring pos 9a to be ordered too |
| 9a                               | 1                 | 9003221A                | • O-ring                    | o-ring                      |  | o. Abb. / not illustrated                                      |
| 10                               | 2                 | 63569A                  | • Sechskantschraube         | hexagon screw               | DIN 933-M12x40A2-70                                  |  |
| 11                               | 2                 | 63572A                  | • Scheibe                   | washer                      | DIN 125-A13-A2                                       |  |
| 12                               | 2                 | 67373A                  | • Schlauchschelle           | clamp                       | 100 - 120 HKV 6KT SW8                                |  |
| 13                               | 2                 | 11120440A               | • Umwälzp. SPump 260 ON/OFF | circ. pump SPump 260 ON/OFF |  | Superseal  |
| 13                               | 2                 | 11122961A               | • Umwälzp. SPump 260 ON/OFF | circ. pump SPump 260 ON/OFF |  | AMP DC   |
| 14                               | 1                 | 93241A                  | • Bodenblech                | floor panel                 |  |  |
| 15                               | 2                 | 84970A                  | • Abgasumlenkung kpl.       | exhaust baffle              |  |  |
| 16                               | 2                 | 63188A                  | • Rohrschelle               | clamp                       | 29/15/6,4 GU-rostoffrei,<br>RSGU 1.29/15W5           |  |
| 17                               | 5                 | 63538A                  | • Rohrschelle               | clamp                       | 38/15/6,4 GU-rostoffrei,<br>RSGU 1.38/15W5           |  |
| 18                               | 2                 | 64456A                  | • Sechskantschraube         | hexagon screw               | DIN 933-M6x25A2-70                                   |  |
| 19                               | 3                 | 63558A                  | • Sechskantschraube         | hexagon screw               | DIN 933-M6x16A2-70                                   |  |
| 20                               | 5                 | 63571A                  | • Scheibe                   | washer                      | DIN 9021-B6,4-A2                                     |  |
| 21                               | 9                 | 63573A                  | • Federring                 | lock washer                 | DIN 128-A6-A2  |  |
| 22                               | 9                 | 63570A                  | • Sechskantmutter           | hexagon nut                 | DIN 985-M6-A2  |  |
| 23                               | 1                 | 93242A                  | • Bodenblech                | floor panel                 |  |  |
| 24                               | 57                | 1303472A                | • Sperrkantring             | lock washer                 |  |  |
| 25                               | 1                 | --                      | • Halterahmen               | support frame               |  |  |
| 26                               | 1                 | 11139213A               | • Halterahmen HS DB         | support frame HS DB         |  |  |

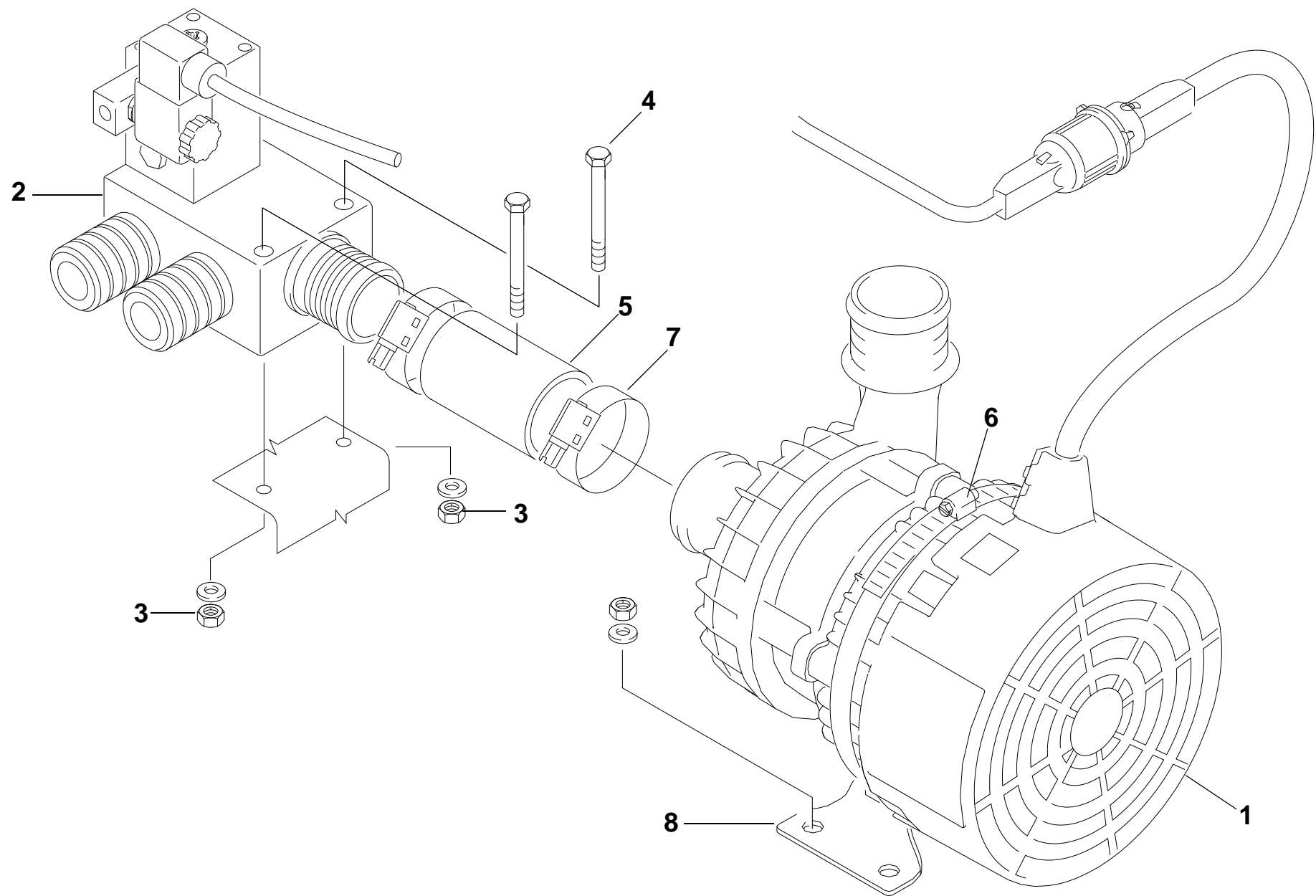


| Pos.                             | Stück<br>Quantity | Bestell-Nr.<br>Part no. | Benennung                    | Description               | Abmessungen / Normteil<br>dimensions / standard part | Variante / Bemerkungen<br>version / remarks  |
|----------------------------------|-------------------|-------------------------|------------------------------|---------------------------|--|--|
| <b>Heizstation / heater unit</b> |                   |                         |                              |                           |  |  |
| 27                               | 1                 | 11124480A               | • Druckluftleitung           | compressed air line       |  |  |
| 28                               | 4                 | 63299A                  | • Rohrschelle                | clamp                     | 10/15/6,4 GU-rostoffrei,<br>RSGU 1.10/15W5           |  |
| 29                               | 4                 | 63558A                  | • Sechskantschraube          | hexagon screw             | DIN 933-M6x16A2-70                                   |  |
| 30                               | 4                 | 63573A                  | • Federring                  | lock washer               | DIN 128-A6-A2  |  |
| 31                               | 1                 | 93208B                  | • Gerade Schottverschraubung | straight bulkhead fitting | RL 10 DIN 2353                                       |  |
| 32                               | 1                 | 428582Z                 | • Federring                  | lock washer               | DIN 128-A16-A3G                                      |  |
| 33                               | 2                 | 11116633B               | • Brennstoffschlauch         | fuel hose                 | Øi 16 L480   |  |
| 34                               | 2                 | 93226B                  | • Winkel-Schottstutzen       | elbow bulkhead fitting    | UL 10 DIN 2353                                       |  |
| 35                               | 2                 | 63190A                  | • Federring                  | lock washer               | DIN 128-A22-A3G                                      |  |
| 36                               | 1                 | 93213A                  | • Brennstoffleitung 640-1    | fuel pipe 640-1           |  |  |
| 37                               | 1                 | 93220B                  | • Brennstoffleitung 640-3    | fuel pipe 640-3           |  | Pos. 40 / 93230A mitbestellen /<br>order too |
| 38                               | 2                 | 150762Z                 | • Hohlschraube               | hollow bolt               | DIN 7643-10-A3G                                      |  |
| 39                               | 4                 | 151203Z                 | • Dichtring                  | o-ring                    | DIN 7603-A14x18-CU                                   |  |
| 40                               | 1                 | 93230A                  | • Kegelrueckschlagventil     | check valve               | Da 10  |  |
| 41                               | 1                 | 93217A                  | • Brennstoffleitung 640-2    | fuel pipe 640-2           |  |  |
| 42                               | 2                 | 93227B                  | • Gerade Schottverschraubung | straight bulkhead fitting | RL 8 DIN 2353  |  |
| 43                               | 2                 | 63179A                  | • Federring                  | lock washer               | DIN 128-A14-A3G                                      |  |
| 44                               | 2                 | 93229B                  | • T-Verschraubung            | T-connection              | EEL 8 DIN 2353                                       |  |
| 45                               | 2                 | 11116064A               | • Brennstoffleitung 640-2    | fuel pipe 640-2           | Øi 7,5 L700  |  |
| 46                               | 2                 | 11116062A               | • Brennstoffleitung 640-1    | fuel pipe 640-1           | Øi 7,9 L400  |  |
| 47                               | 4                 | 2711019A                | • Hohlschraube               | hollow bolt               | 6-3 - VDA-235-14.25                                  |  |
| 48                               | 8                 | 151157Z                 | • Dichtring                  | o-ring                    | DIN 7603-A10x14-CU                                   |  |

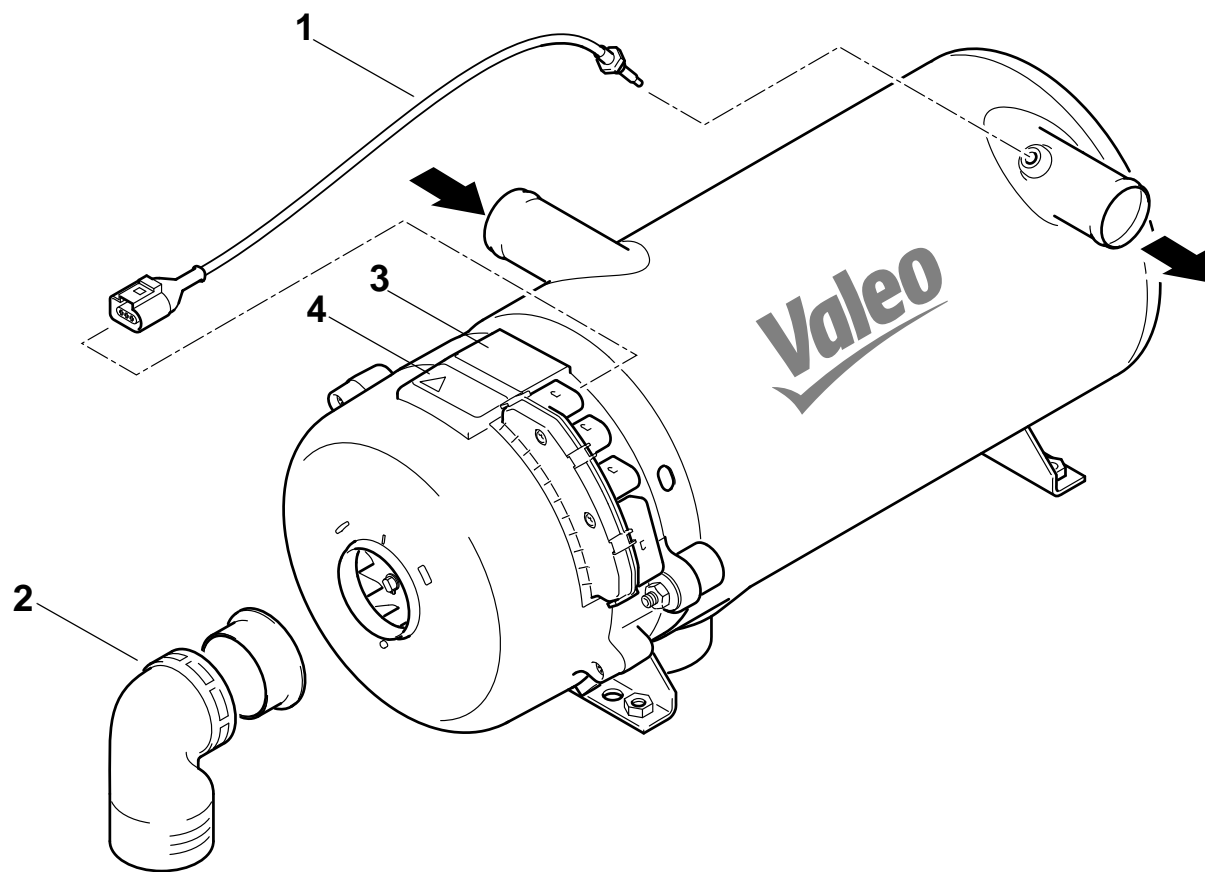


| Pos.                             | Stück<br>Quantity | Bestell-Nr.<br>Part no. | Benennung                | Description            | Abmessungen / Normteil<br>dimensions / standard part | Variante / Bemerkungen<br>version / remarks |
|----------------------------------|-------------------|-------------------------|--------------------------|------------------------|--|---|
| <b>Heizstation / heater unit</b> |                   |                         |                          |                        |  |   |
| 55                               | 32                | 67371A                  | • Schlauchschelle        | clamp                  | 48 - 55  |   |
| 56                               | 5                 | 11139242A               | • Formschlauch           | molded hose            | Øi 38x90° L70x90                                     | EN 45545                                    |
| 57                               | 11                | 63188A                  | • Rohrschelle            | clamp                  | 38/15/6,4 GU-rostfrei,<br>RSGU 1.38/15W5             |   |
| 58                               | 11                | 63558A                  | • Sechskantschraube      | hexagon screw          | DIN 933-M6x16A2-70                                   |   |
| 59                               | 15                | 63573A                  | • Federring              | lock washer            | DIN 128-A6-A2  |   |
| 60                               | 4                 | 11116954A               | • Wasserschlauch         | water hose             | Øi 38 L65  |   |
| 61                               | 1                 | 91800C                  | • Absperrhahn mit Filter | stop valve with filter |  |   |
| 62                               | 1                 | 66532B                  | • Filtereinsatz          | filter insert          |  |   |
| 64                               | 2                 | 64559A                  | • Sechskantschraube      | hexagon screw          | DIN 931-M6x90A2-70                                   |   |
| 65                               | 4                 |                         | • Scheibe                | washer                 | DIN 9021-B6,4-A2                                     |   |
| 66                               | 6                 | 333352Z                 | • Gummitülle             | rubber grommet         |  |   |
| 67                               | 6                 | 11116051A               | • Formschlauch           | molded hose            | Øi 38 - Øi 32 L70                                    |   |
| 68                               | 6                 | 125400Z                 | • Schlauchschelle        | clamp                  | 30.....45  |   |
| 69                               | 2                 | 9000357B                | • 2/2-wege-Magnetventil  | solenoid valve         |  |   |
| 70                               | 2                 | 11139242A               | • Formschlauch           | molded hose            | Øi 38x90° L70x90                                     | EN 45545                                    |
| 71                               | 6                 | 63570A                  | • Sechskantmutter        | hexagon nut            | DIN 985-M6-A2  |   |
| 72                               | 1                 | 9002086A                | • Reduzierkrümmer        | reduction elbow        | 38/32  |   |
| 73                               | 1                 | 9002036B                | • Rohrstück              | tube section           | D 38x300   |   |
| 74                               | 1                 | 11124135B               | • Rohr D38               | tube D38               |  | Dach VL / roof supply                       |
| 75                               | 1                 | 11124134B               | • Rohr D38               | tube D38               |  | Frontbox VL / frontbox supply               |
| 76                               | 1                 | 11124404A               | • Rohr D38               | tube D38               |  | zw. den HG / between heaters                |
| 77                               | 1                 | 11124138C               | • Rohr D38               | tube D38               |  | HG zu Pumpen / heater to pumps              |
| 78                               | 1                 | 11122666B               | • Rohr D38               | tube D38               |  | zum Motor / to engine                       |
| 79                               | 1                 | 11124141B               | • Rohr D38               | tube D38               |  | Konvekt. Rückl. / Convector return          |
| 80                               | 1                 | 11124138C               | • Rohr D38               | tube D38               |  | HG zu Pumpen / heater to pumps              |
| 81                               | 1                 | 11124137C               | • Rohr D38               | tube D38               |  | Konvekt. VL / convector supply              |
| 82                               | 1                 | 11124142A               | • Rohr D38               | tube D38               |  | vom Motor / from engine                     |
| 83                               | 3                 | 11139243A               | • Silikonschlauch        | silicone tube          | L 65   | EN 45545                                    |

# 7 - Ventilblock

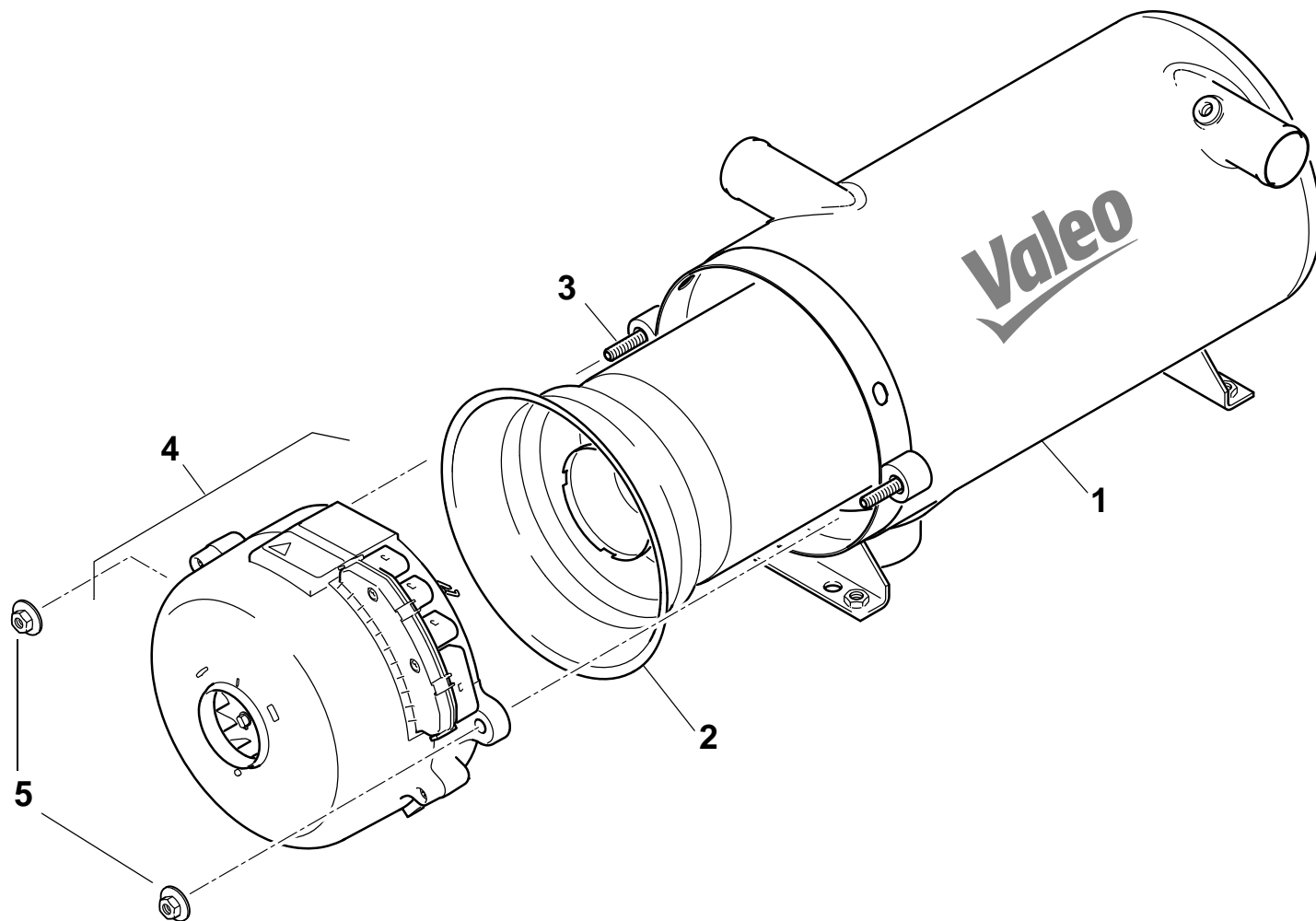


| Pos.                             | Stück<br>Quantity | Bestell-Nr.<br>Part no. | Benennung                         | Description                          | Abmessungen / Normteil<br>dimensions / standard part | Variante / Bemerkungen<br>version / remarks |
|----------------------------------|-------------------|-------------------------|-----------------------------------|--------------------------------------|--|---|
| <b>Ventilblock / valve block</b> |                   |                         |                                   |                                      |  |   |
| 0                                | 1                 |                         |                                   |                                      |  |   |
| 1                                | 1                 | 11122961A               | • Umwälzpumpe SPump 260<br>ON/OFF | circulating pump SPump 260<br>ON/OFF |  | AMP DC                                      |
| 2                                | 1                 | 2710028A                | • Ventilblock ZSB                 | valve block assy                     |  |   |
| 3                                | 2                 | 63570A                  | • Mutter                          | nut, hexagon                         | DIN985-M6-A2   |   |
| 4                                | 2                 | 11115041A               | • Schraube                        | screw                                | M6x60<br>DIN 931 - A2/70-SW10                        |   |
| 5                                | 1                 | 11139243A               | • Silikonschlauch                 | rubber hose                          | L65  | EN 45545                                    |
| 6                                | 1                 | 92660B                  | • Schlauchschelle                 | hose clamp                           | 120 - 140mm  |   |
| 7                                | 2                 | 1303555A                | • Schlauchschelle                 | hose clamp                           |  |   |
| 8                                | 1                 | 11138285A               | • Halter SPump                    | mounting tray SPump                  |  | Aufnahme DB                                 |

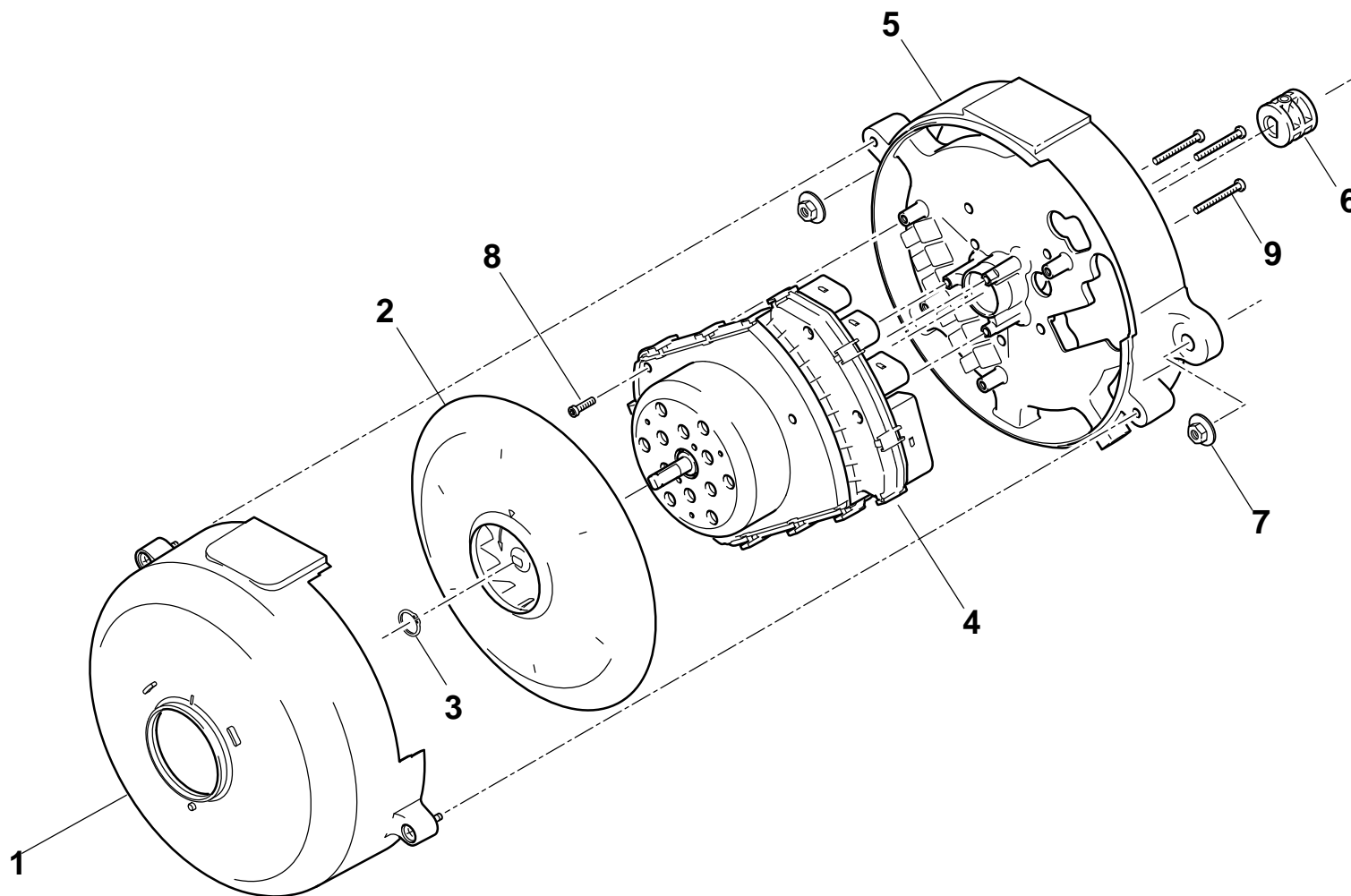




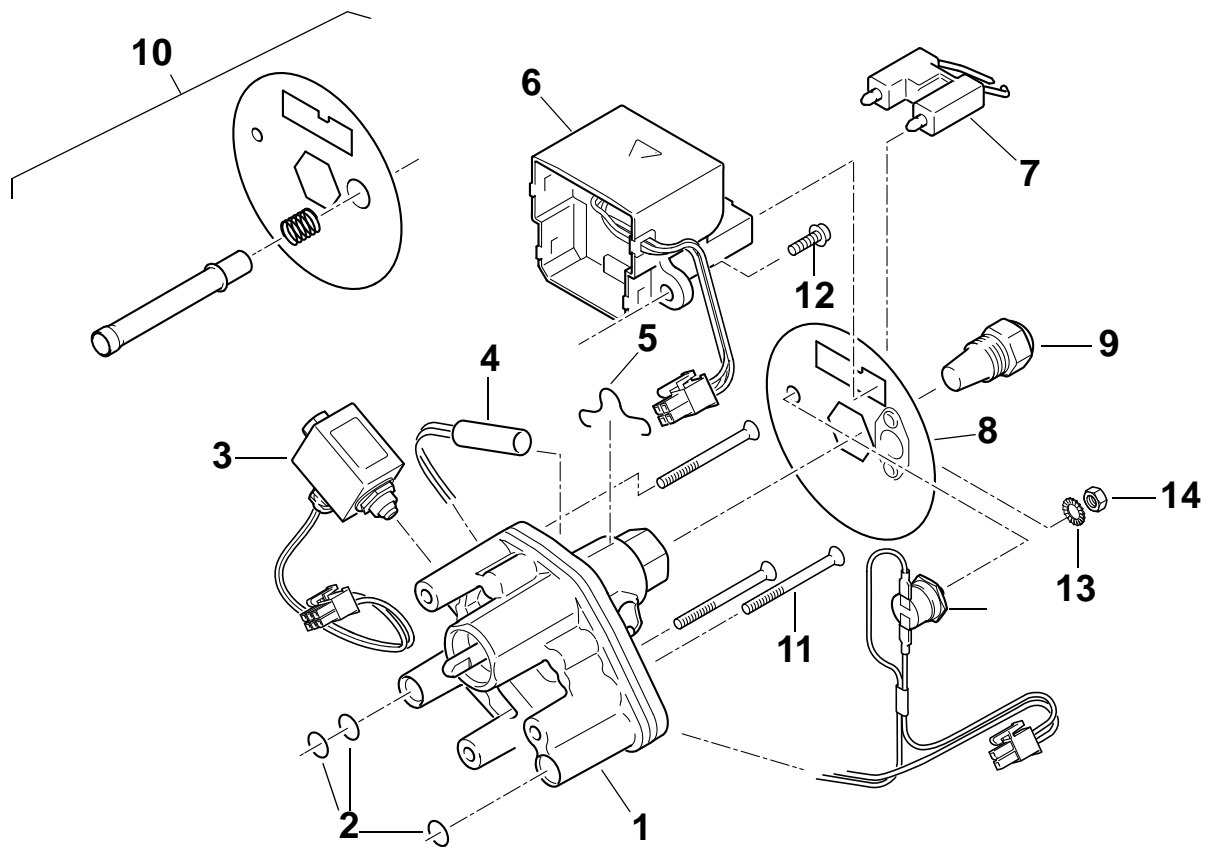
| Pos.               | Stück<br>Quantity | Bestell-Nr.<br>Part no. | Benennung                              | Description                              | Abmessungen / Normteil<br>dimensions / standard part | Variante / Bemerkungen<br>version / remarks |
|--------------------|-------------------|-------------------------|--|--|--|---|
| <b>Thermo plus</b> |                   |                         |  |  |  |   |
| 0                  | REF               |                         | Hg Thermo plus 300.020B                | heater Thermo plus 300.020B              | 24 V   | siehe / see fig. 6-1                        |
| 1                  | 1                 | 11113837D               | • Temperatursensorik                   | temperature sensors                      |  |   |
| 2                  | 1                 | 11113052A               | • Brennluft-Krümmen,<br>Ersatzteil-Kit | combustion air elbow,<br>spare parts kit |  |   |
| 3                  | 1                 | --                      | • Typschild                            | model plate                              |  | kein Ersatzteil / no spare part             |
| 4                  | 1                 | 2710487B                | • Warnschild                           | warning placard                          |  |   |
| 5<br>no fig.       | 1                 | 11139340B               | • Kabelbaum HS LINT kpl.               | wiring harness HS LINT assy              |  |   |



| Pos.                   | Stück<br>Quantity | Bestell-Nr.<br>Part no. | Benennung   | Description   | Abmessungen / Normteil<br>dimensions / standard part | Variante / Bemerkungen<br>version / remarks   |
|------------------------|-------------------|-------------------------|---|---|--|---|
| <b>Thermo plus 300</b> |                   |                         |   |   |  |   |
| 0                      | REF               |                         | Hg Thermo plus 300.020B   | heater Thermo plus 300.020B   | 24 V   | siehe / see fig. 6-1  |
| 1                      | 1                 | 11120391B               | • Wärmeübertrager   | heat exchanger  |  |   |
| 2                      | 1                 | 2710229B                | • Brennkammer   | combustion chamber  |  | Achtung: muss für alle<br>Bahnapplikationen 23-35 kW ver-<br>wendet werden!<br>Attention: Must be used for all rail<br>applications 23-35kW |
| 3                      | 2                 | 11115094B               | • Gewindestift  | threaded pin  | DIN913-M8x45-8.8                                     |   |
| 4                      | 1                 | 11140020A               | • Ersatzbrenner<br>Thermo plus 300 RAIL 70-85<br>mit Düsenstockvorwärmung | replacement burner<br>Thermo plus 350 RAIL 70-85<br>with nozzle block preheater |  |   |
| 5                      | 2                 | 2710319A                | • Kombimutter   | combination nut   | M8x7.5   |   |

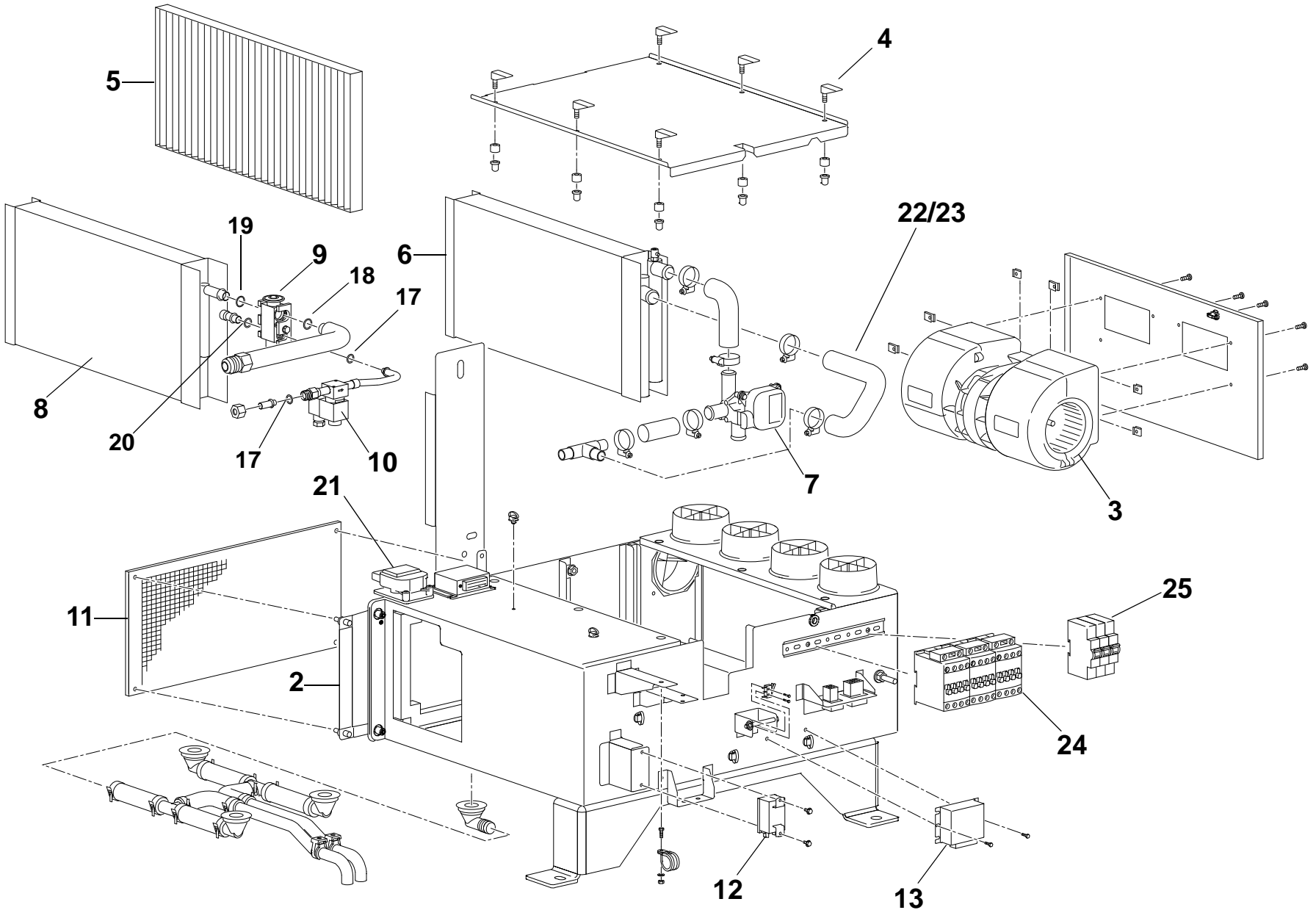


| Pos.                   | Stück<br>Quantity | Bestell-Nr.<br>Part no. | Benennung  | Description                             | Abmessungen / Normteil<br>dimensions / standard part | Variante / Bemerkungen<br>version / remarks |
|------------------------|-------------------|-------------------------|--|---|--|---|
| <b>Thermo plus 300</b> |                   |                         |  |   |  |   |
| 0                      | REF               |                         | Hg Thermo plus 300.020B                          | heater Thermo plus 300.020B             | 24 V   | siehe / see fig. 6-1                        |
| 1                      | 1                 | 11119984A               | • Haube  | hood assy                               |  |   |
| 2                      | 1                 | 11113053A               | • Lüfter   | fan assy                                |  | inkl. Pos 3 / incl. item 3                  |
| 3                      | 1                 | 2711020A                | • • Sicherungsring                               | circlip                                 | DIN471-8x0.8   |   |
| 4                      | 1                 | 11139236A               | • Steuergerät, SG1589 30kW<br>RAIL, programmiert | control unit SG1589 30kW RAIL,<br>coded |  |   |
| 5                      | 1                 | --                      | • Gehäuse  | housing                                 |  | kein Ersatzteil / no spare part             |
| 6                      | 1                 | 11117847B               | • Kupplung                                       | coupling                                |  |   |
| 7                      | 2                 | 2710319A                | • Kombimutter                                    | combination nut                         | M8x7.5   |   |
| 8                      | 4                 | 11120377A               | • Flachkopfschraube                              | flat head screw                         | DIN7500-1 CE-H, M4x12                                |   |
| 9                      | 3                 | 11120378A               | • Flachkopfschraube                              | flat head screw                         | DIN7500-1 CE-T, M4x35                                |   |



| Pos.                   | Stück<br>Quantity | Bestell-Nr.<br>Part no. | Benennung                                    | Description                                     | Abmessungen / Normteil<br>dimensions / standard part | Variante / Bemerkungen<br>version / remarks  |
|------------------------|-------------------|-------------------------|--|---|--|--|
| <b>Thermo plus 300</b> |                   |                         |  |   |  |  |
| 0                      | REF               |                         | Hg Thermo plus 300.020B                      | heater Thermo plus 300.020B                     | 24 V   | siehe / see fig. 6-1   |
| 1                      | 1                 | 11118536E               | • Brennstoffpumpe 20-35kW / Kit              | fuel pump 20-35kW / kit                         |  | inkl. Kupplung und Befestigungs-<br>schrauben / incl. clutch and<br>attaching screws |
| 2                      | 1                 | 11113051A               | • Dichtung Brennstoffpumpe /<br>Kit ET       | gasket fuel pump / kit SP                       |  |  |
| 3                      | 1                 | 11115301A               | • Magnetventil / Kit ET                      | solenoid valve / kit SP                         |  |  |
| 4                      | 1                 | 11113972A               | • Heizpatrone 80W mit<br>Thermostat / Kit ET | heating cartridge 80W<br>w. thermostat / kit SP |  |  |
| 5                      | 1                 | 19723B                  | • Haltebügel                                 | mounting bracket                                |  |  |
| 6                      | 1                 | 11114862E               | • Zündfunktenegeber                          | electronic ignition unit                        |  |  |
| 7                      | 1                 | 14846D                  | • Zündelektrode                              | ignition electrode                              |  |  |
| 8                      | 1                 | 11125819A               | • Scheibe                                    | disc  |  |  |
| 9                      | 1                 | 2710235B                | • Hochdruck-Zerstäuberdüse,<br>30kW          | high-pressure atomizer nozzle,<br>30kW          |  |  |
| 10                     | 1                 | 11136328A               | • Staubschutzkit (3-teilig)                  |   |  | inkl. Pos. 8 / incl. item 8  |
| 11                     | 3                 | 2710958B                | • Senkkopfschrauben                          | countersunk head screw                          | ISO10642-VDA-High-T,<br>M5x55                        |  |
| 12                     | 2                 | 2710315A                | • Kombischraube                              | combination screw                               | DIN34821 M5X16-Z9-8.8                                |  |
| 13                     | 1                 | 152269Z                 | • Fächerscheibe                              | serrated lock washer                            | DIN6798-A4, 3- PHRF                                  |  |
| 14                     | 1                 | 470945Z                 | • Sechskantmutter                            | hexagon nut                                     | ISO4032, M4x6  |  |

9 - Bugschrank / frontbox

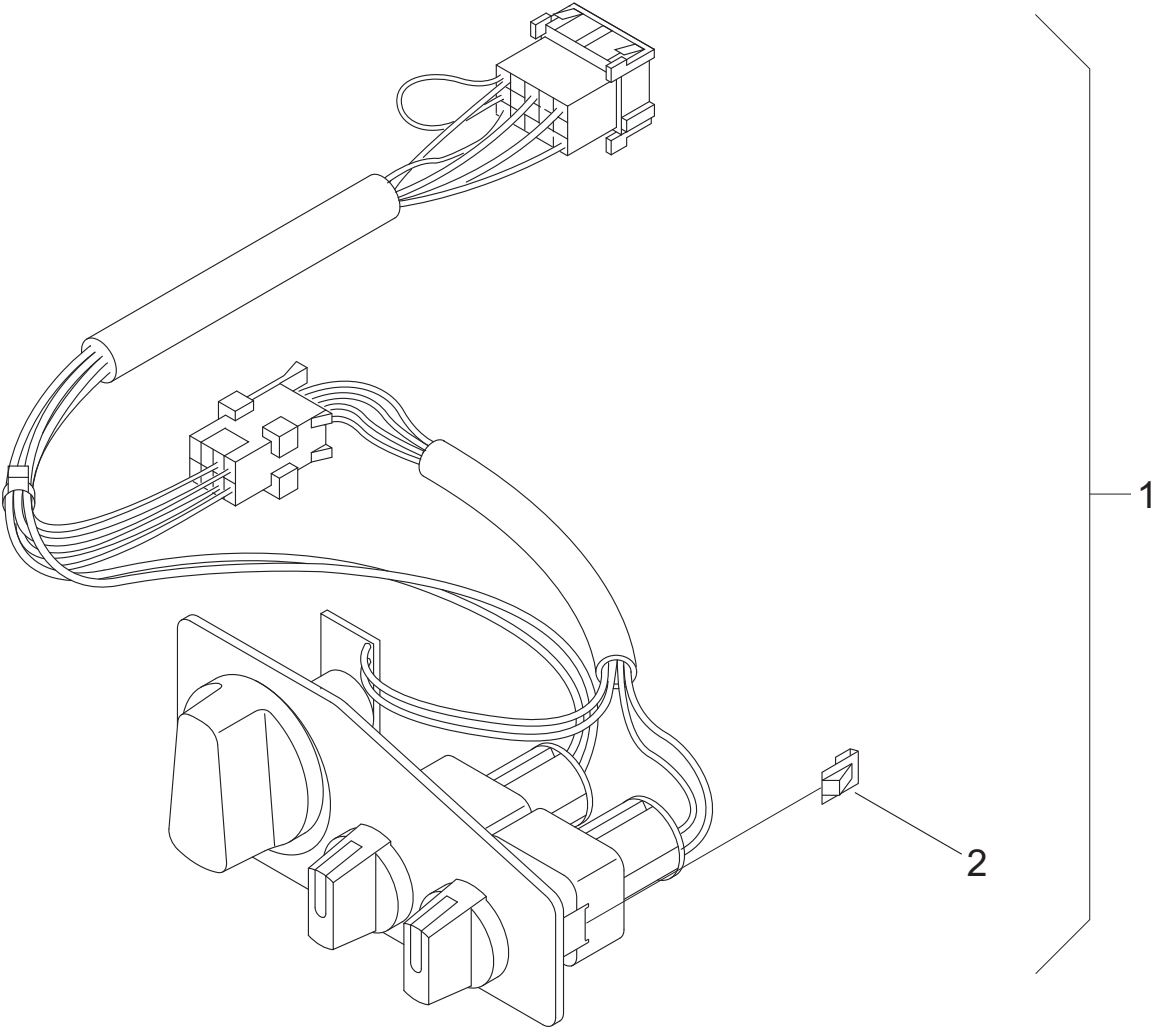




| Pos.                         | Stück<br>Quantity | Bestell-Nr.<br>Part no. | Benennung   | Description  | Abmessungen / Normteil<br>dimensions / standard part | Variante / Bemerkungen<br>version / remarks  |
|------------------------------|-------------------|-------------------------|---|--|--|--|
| <b>Bugschrank / frontbox</b> |                   |                         |   |  |  |  |
| 1                            | REF               | 11137696A               | Bugschrank ZSB  | frontbox assy  |  |  |
| 2                            | 1                 | 11116626A               | • Frischluftkanal                                       | fresh air channel                                      |  |  |
| 3                            | 1                 | 11125936A               | • Doppelradialgebläse                                   | EC blower  |  | EN 45545 zertifiziert / certified  |
| 4                            | 6                 | 11119264A               | • Schnellverschluss                                     | quick fastener   |  | für Servicedeckel / for service cover  |
| 5                            | 1                 | NEU                     | • Filter  | filter   |  | EN 45545 zertifiziert / certified<br>Luftrichtungspfeile beachten / pay attention to the air flow arrows   |
| 6                            | 1                 | 11119266A               | • Wärmetauscher   | heat exchanger   |  |  |
| 7                            | 1                 | 11119267A               | • Wasserventil, 3-Wege,<br>Ø22/22/22 mit Stellmotor 24V | water valve, 3 ways, Ø22/22/22<br>with servo motor 24V |  |  |
| 8                            | 1                 | 11119268A               | • Verdampfer  | evaporator   |  |  |
| 9                            | 1                 | 80087A                  | • Expansionsventil                                      | expansion valve  |  | Nach Austausch Kork-Isolierband um<br>E-Ventil und bis Sammler wickeln /<br>after replacing the expansion valve,<br>wrap the tape around the expansion<br>valve and to the collector |
| 10                           | 1                 | 11119269A               | • Magnetventil  | solenoid valve   |  |  |
| 11                           | 1                 | 11116625A               | • Drahtgitter   | grille, stainless steel                                |  |  |
| 12                           | 1                 | 11119270A               | • Thermostat fest eingestellt                           | thermostat, firmly adjusted                            |  |  |
| 13                           | 1                 | --                      | • HCC   | HCC  |  |  |
| 14                           | 3                 | --                      | • Sicherung, 2A, grau                                   | fuse, 2A, grey   |  |  |
| 15                           | 1                 | --                      | • Diodenbaustein, 4 Dioden                              | diode block, 4 diodes                                  |  |  |
| 16                           | 3                 | 11119274A               | • Relais 24V, Wechsler                                  | relay, changer   |  |  |
| 17                           | 2                 | 85712A                  | • O-Ring  | o-ring   | für/for Ø 10   |  |
| 18                           | 1                 | 85713A                  | • O-Ring  | o-ring   | für/for Ø 18   |  |
| 19                           | 1                 | 80641A                  | • O-Ring  | o-ring   | für/for Ø 15   |  |
| 20                           | 1                 | 89762A                  | • O-Ring  | o-ring   | für/for Ø 12   |  |
| 21                           | 1                 | 1104166C                | • Klappenmotor Buschjost 24V                            | servo motor, flap, Buschjost 24V                       |  | Beistellteil / part provided   |
| 22<br>no fig.                | 1                 | 11123505A               | • Rohranschluss Kupfer                                  | pipe connection copper                                 |  |  |

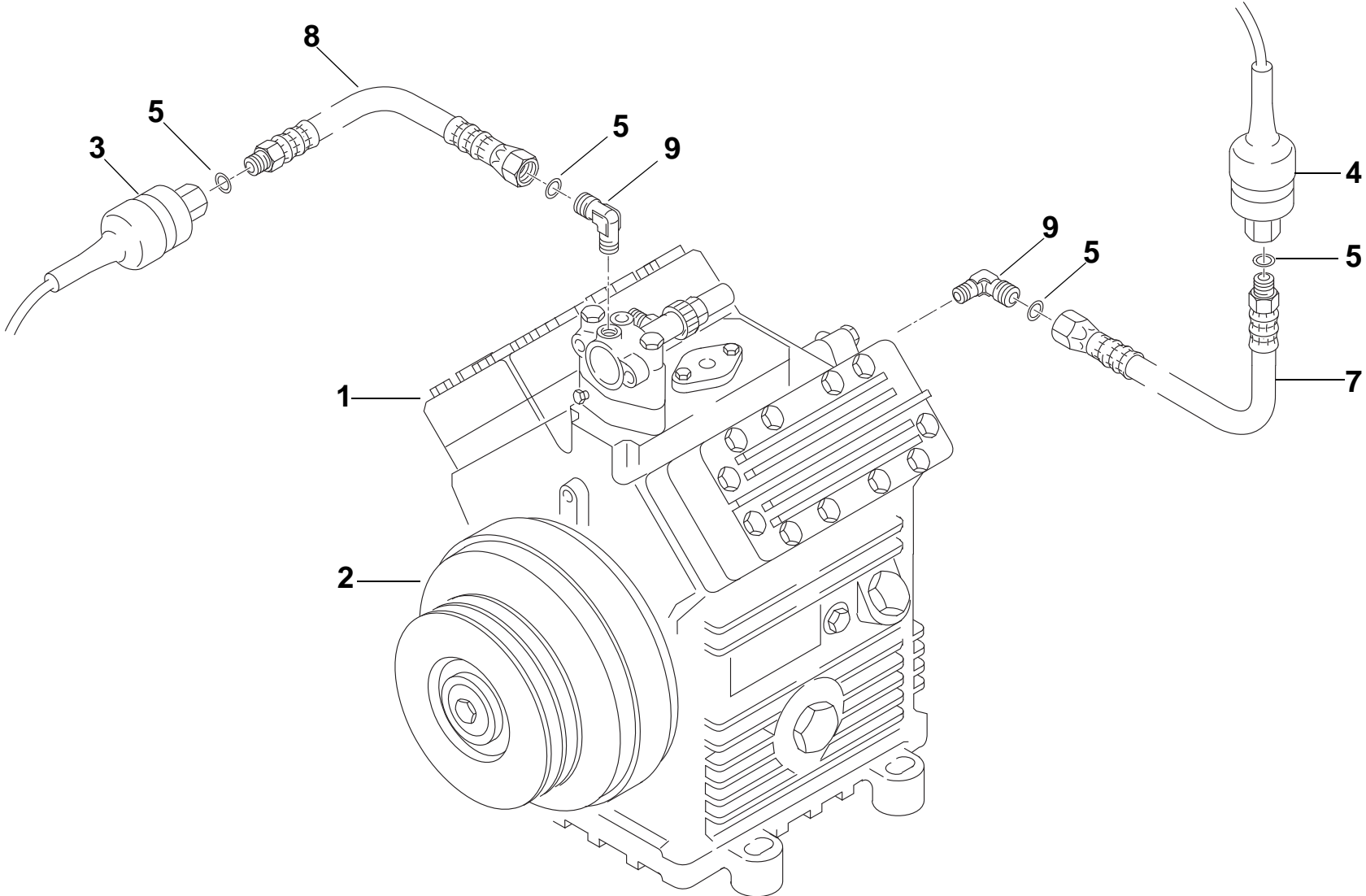
|               |   |     |                        |                   |  |
|---------------|---|-----|------------------------|-------------------|--|
| 23<br>no fig. | 1 | --  | • Schlauchbogen        | molded hose       | geteilt in/divided into 1x NW22<br>90° 95x45, 1x NW22 55, 1x<br>NW22 105 |
| 24            | 3 | NEU | • Blockschutz / Relais | contactor / relay | EN 45545 zertifiziert / certified  |
| 25            | 3 | NEU | • Sicherung 2A         | Fuse 2A           | EN 45545 zertifiziert / certified  |

10 - Bedienteil / operating element



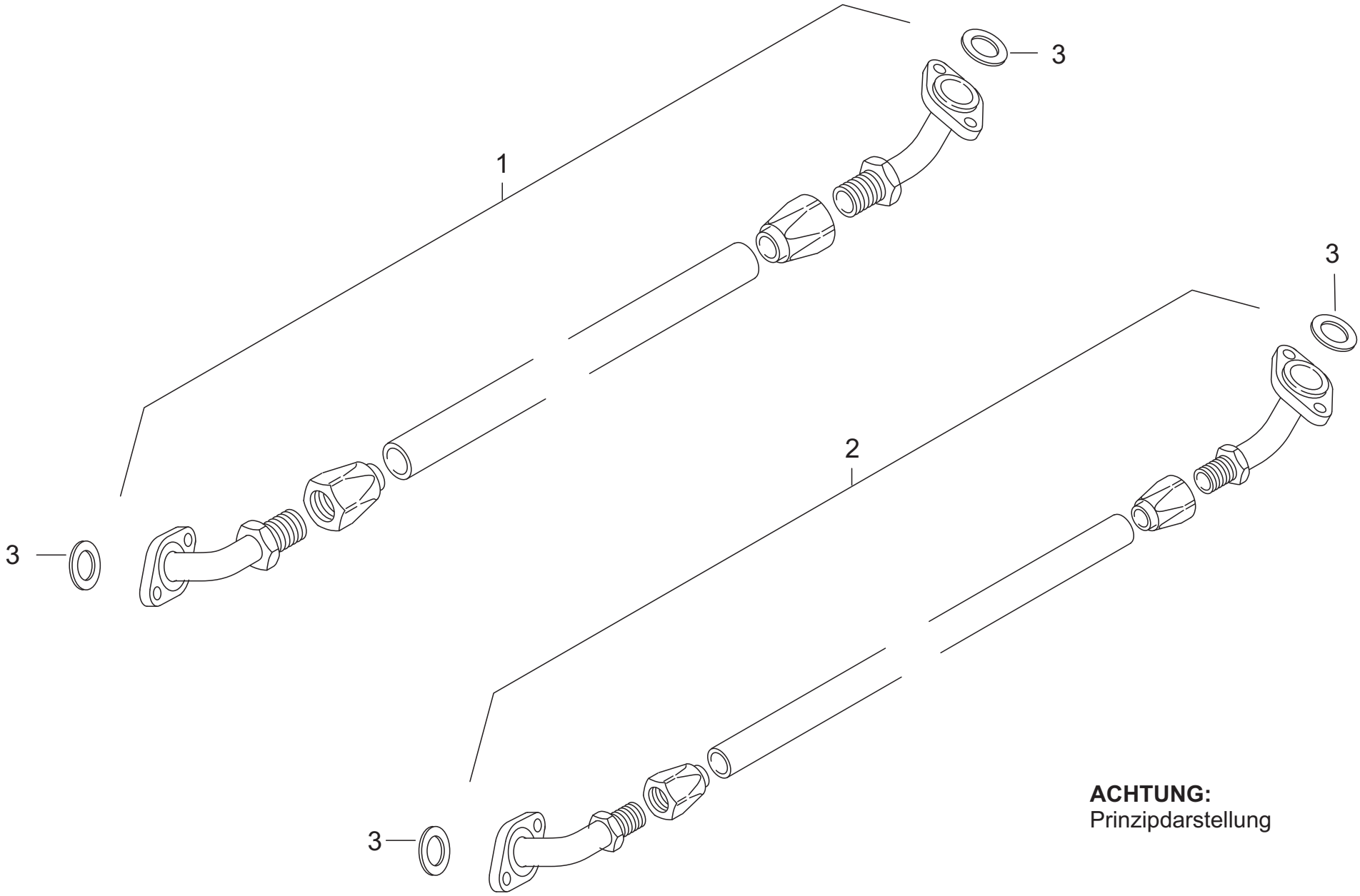
| Pos.                                  | Stück<br>Quantity | Bestell-Nr.<br>Part no. | Benennung    | Description       | Abmessungen / Normteil<br>dimensions / standard part | Variante / Bemerkungen<br>version / remarks |
|---------------------------------------|-------------------|-------------------------|--------------|-------------------|--|---|
| <b>Bedienteil / operating element</b> |                   |                         |              |                   |  |   |
| 1                                     | 2                 | 11116627A               | Bedienteil   | operating element |  | siehe / see fig. 1-5 / 1-29                 |
| 2                                     | 1                 |                         | • Haltefeder | retention clip    |  |   |

11 - Verdichtergruppe / compressor assy



| Pos.                                      | Stück<br>Quantity | Bestell-Nr.<br>Part no. | Benennung                            | Description                      | Abmessungen / Normteil<br>dimensions / standard part | Variante / Bemerkungen<br>version / remarks                              |
|---|-------------------|-------------------------|--------------------------------------|----------------------------------|--|--|
| <b>Verdichtergruppe / compressor assy</b> |                   |                         |                                      |                                  |  |  |
| 0   | REF               | 1104071B                | Verdichtergruppe                     | compressor assy                  |  | EURO III; siehe / see fig. 1-12 / 1-36                                   |
| 1   | 1                 | 90825B                  | • Verdichter FKX 40-650 K            | compressor FKX 40-650 K          |  | bei EURO III   |
| 2   | 1                 | 93126C                  | • Elektromagnetkupplung<br>LA 16.155 | electromagnetic clutch LA 16.155 | 24 V   |  |
| 3   | 1                 | 1103931D                | • Hochdruckwächter 24 bar            | HP switch 24 bar                 |  | ersetzt / replaces 87408B  |
| 4   | 1                 | 1103932D                | • Niederdruckwächter 2 bar           | LP switch 2 bar                  |  | ersetzt / replaces 87407B  |
| 5   | 4                 | 87578A                  | • Cu-Dichtring                       | cu sealing ring                  |  |  |
| 6   | 1                 | 81019B                  | • Winkel                             | angle                            |  | bei EURO III; jeweils am HD- und ND-Wächter / each with HP and LP switch |
| 7   | 1                 | 11138145A               | • Kältemittelschlauch ND-Schalter    | refrigerant hose LP switch       |  | bei EURO III   |
| 8   | 1                 | 11138142A               | • Kältemittelschlauch HD-Schalter    | refrigerant hose HP switch       |  | bei EURO III   |
| 9   | 2                 | 81019A                  | • Winkelstück ohne Ventileinsatz     | connector without valve insert   | 7/16" UNF/1/8"<br>NPT-IGew.M5                        | jeweils an HD/ND-Wächer / each with HP and LP switch (EURO III)          |

12 - Schlauchsatz / hose kit

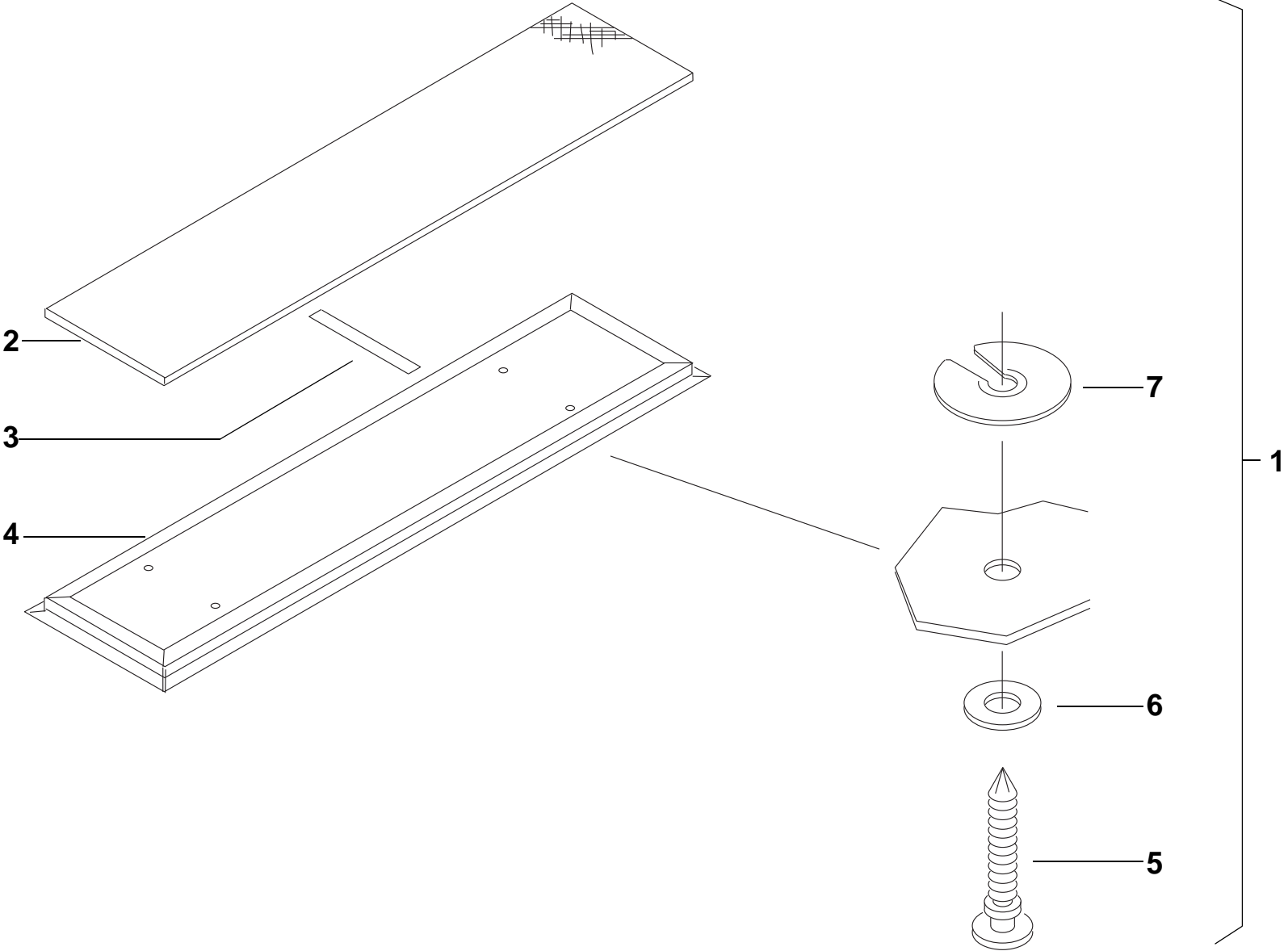


**ACHTUNG:**  
Prinzipdarstellung

| Pos.                           | Stück<br>Quantity | Bestell-Nr.<br>Part no. | Benennung                  | Description           | Abmessungen<br>dimensions | Variante / Bemerkungen<br>version / remarks |
|--------------------------------|-------------------|-------------------------|----------------------------|-----------------------|---------------------------|---|
| <b>Schlauchsatz / hose kit</b> |                   |                         |                            |                       |                           |   |
| 0                              | REF               | 11137690A               | Schlauchsatz Motorraum     | hose kit engine bay   |                           | NF 45545                                    |
| 1                              | 1                 | 11137782A               | • Kältemittelschlauch kpl. | refrigerant hose assy | NW 32                     | NF 45545                                    |
| 2                              | 1                 | 11137783A               | • Kältemittelschlauch kpl. | refrigerant hose assy | NW 25                     | NF 45545                                    |
| 3                              | 4                 | 24632A                  | • Ventilflanschdichtung.   | gasket valve flange   | (rund)                    |   |

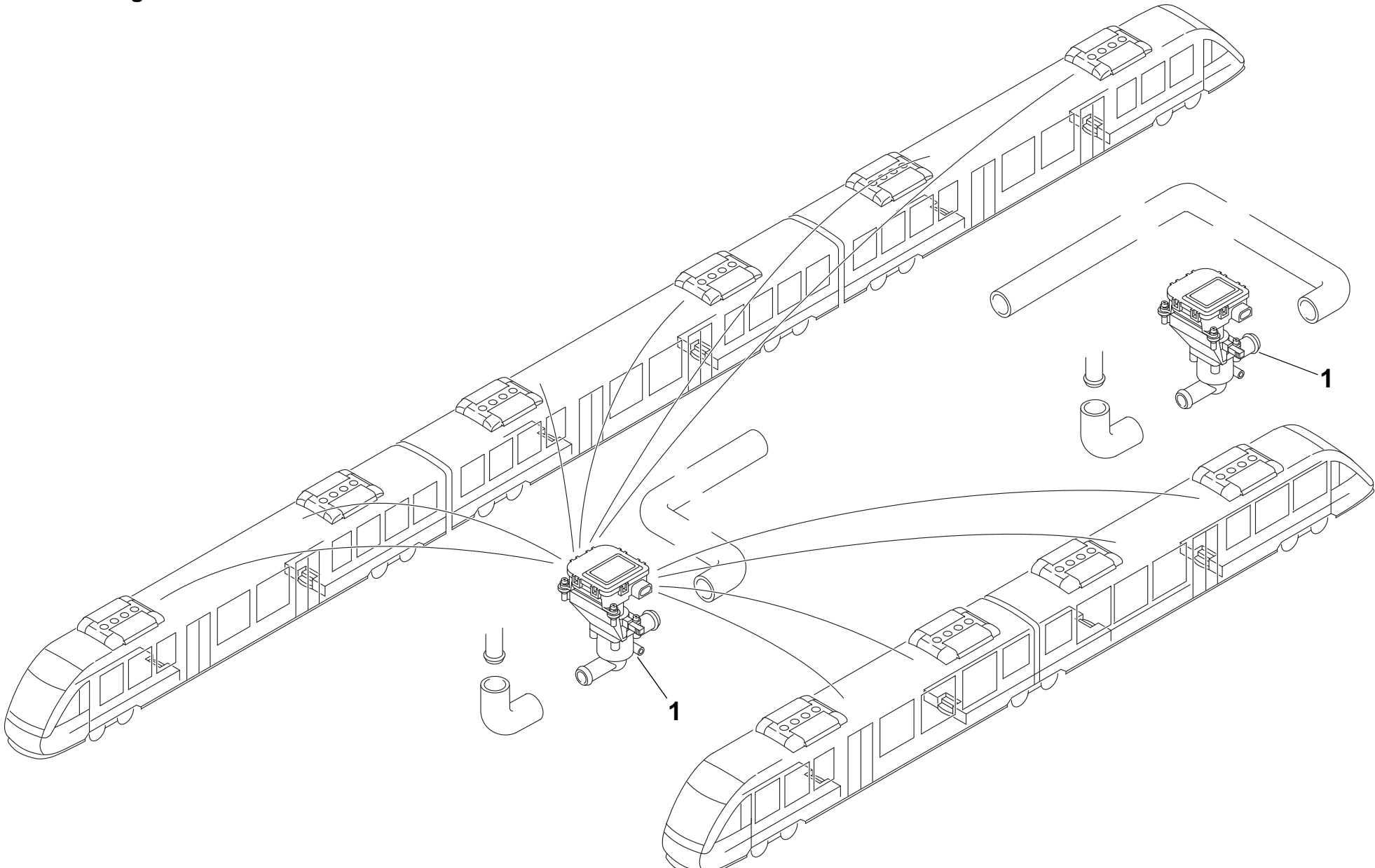


13 - Umluftfilter ZSB / air circulation filter



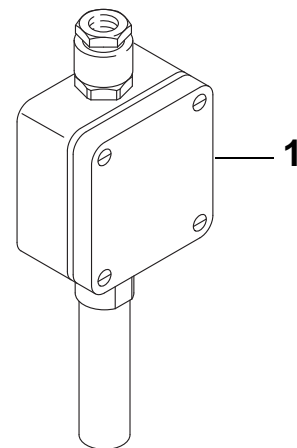
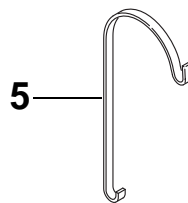
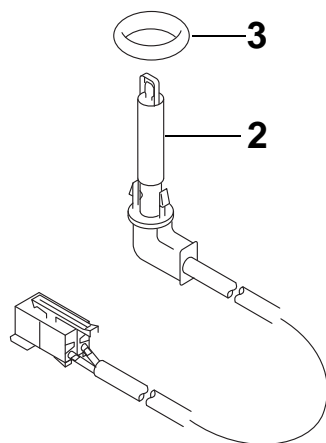
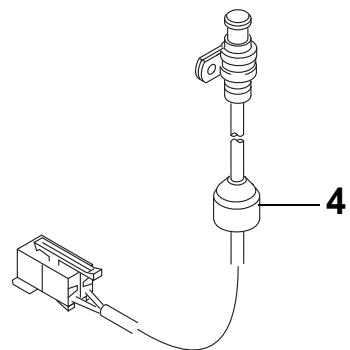
| Pos.   | Stück<br>Quantity | Bestell-Nr.<br>Part no. | Benennung                      | Description                          | Abmessungen / Normteil<br>dimensions / standard part | Variante / Bemerkungen<br>version / remarks |
|--|-------------------|-------------------------|--------------------------------|--------------------------------------|--|---|
| <b>Umluftfilter / air circulation filter</b> |                   |                         |                                |                                      |  |   |
| 1  | 1                 | 93100B                  | Umluftfilter ZSB               | air circulation filter assy          |  | siehe / see fig. 1-11 / 1-35                |
| 2  | 1                 | 93127A                  | • Filtermatte                  | filter pad                           |  |   |
| 3  | 1                 | 93128A                  | • Filterniederhalter           | filter press pad                     |  |   |
| 4  | 1                 | 93260B                  | • Umluftfilterkassette         | air circulation filter cartridge     |  |   |
| 5  | 4                 | 89668D                  | • Umluftfilterbolzen KK        | air circulation filter bolt KK       |  |   |
| 6  | 4                 | 89691A                  | • Unterleggummi KK             | rubber washer                        | M6 x 18 x 1  |   |
| 7  | 4                 | 89695A                  | • Spannscheibe Umluftfilter KK | spring washer air circulation filter |  |   |

14 - Motorregelventil / motor control valve



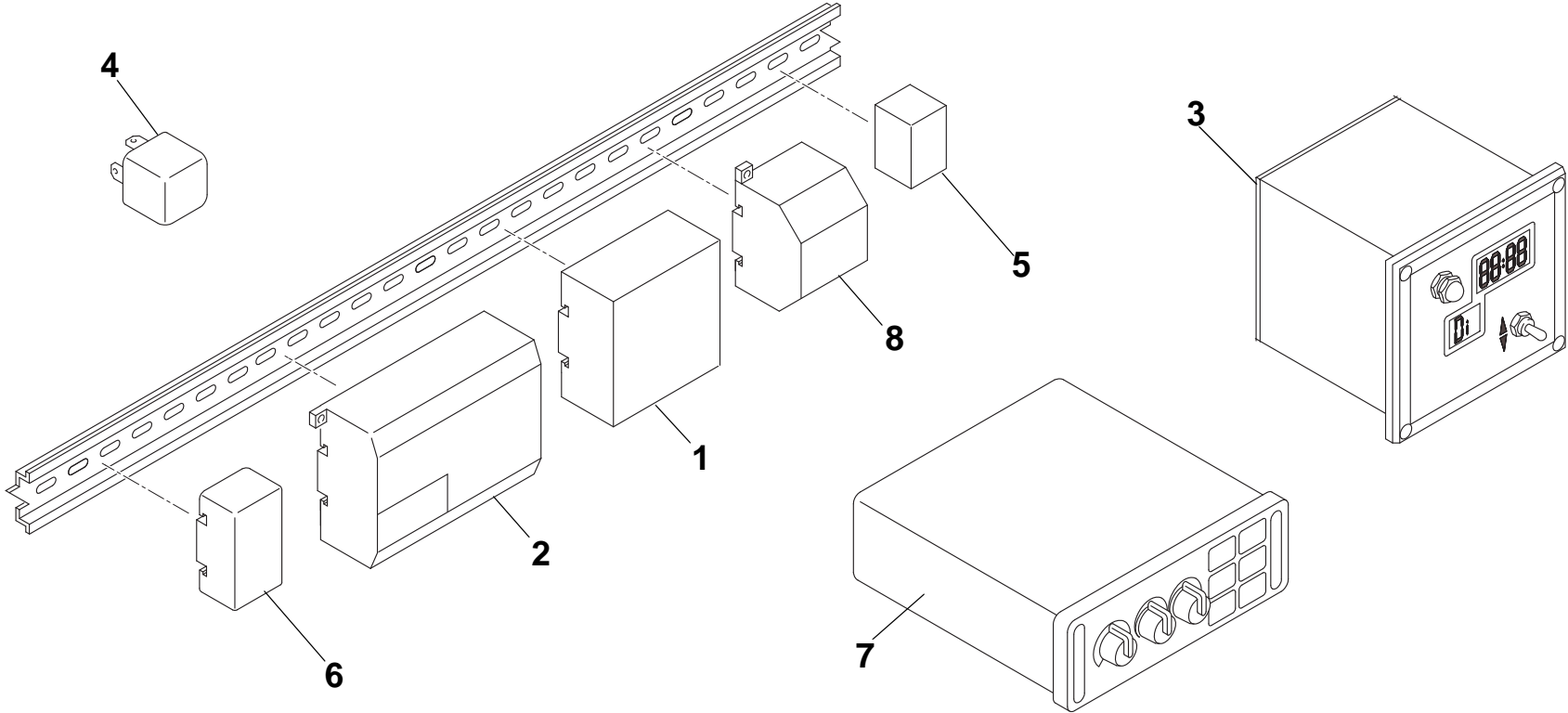
| Pos.  | Stück<br>Quantity | Bestell-Nr.<br>Part no. | Benennung          | Description           | Abmessungen / Normteil<br>dimensions / standard part | Variante / Bemerkungen<br>version / remarks |
|---|-------------------|-------------------------|--------------------|-----------------------|--|---|
| <b>Motorregelventil / motor control valve</b> |                   |                         |                    |                       |  |   |
| 1   | REF               | 1104168B                | 3-wege-Motorventil | three-way motor valve |  |   |

# 15 - Fühler / sensor



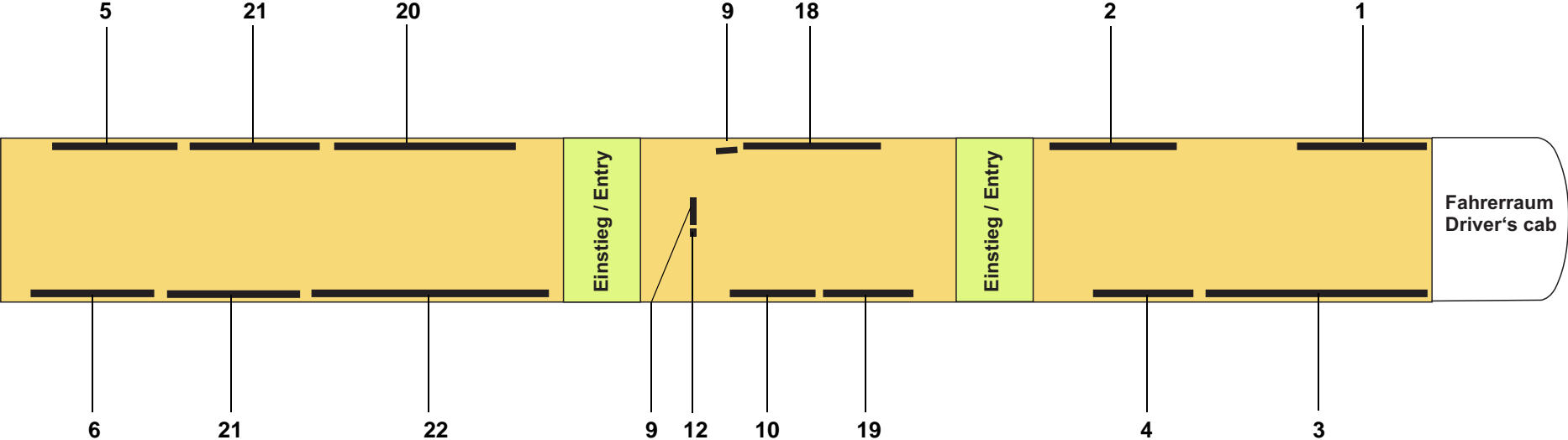
| Pos.                   | Stück<br>Quantity | Bestell-Nr.<br>Part no. | Benennung                | Description                 | Abmessungen / Normteil<br>dimensions / standard part | Variante / Bemerkungen<br>version / remarks |
|------------------------|-------------------|-------------------------|--------------------------|-----------------------------|--|---|
| <b>Fühler / sensor</b> |                   |                         |                          |                             |  |   |
| 1                      | REF               | 93314A                  | Außentemperaturfühler    | outside temperature sensor  |  | siehe / see fig. 1-9 / 1-33                 |
| 2                      | REF               | 83164B                  | Temperatursensor         | temperature sensor          | 200 lg.  | siehe / see fig. 1-6 / 1-30                 |
| 3                      | 4                 | 80640A                  | O-ring                   | O-ring                      | NW 10; R134a beständig /<br>R134a resistant          | LINT 41                                     |
| 4                      | REF               | 1103553A                | Temperatursensor Außen   | temperature sensor outside  |  | siehe / see fig. 1-10 / 1-34                |
| 5                      | REF               | 11118671A               | Halter, Temperaturfühler | bracket, temperature sensor |  |   |

16 - Elektrik / electrical system

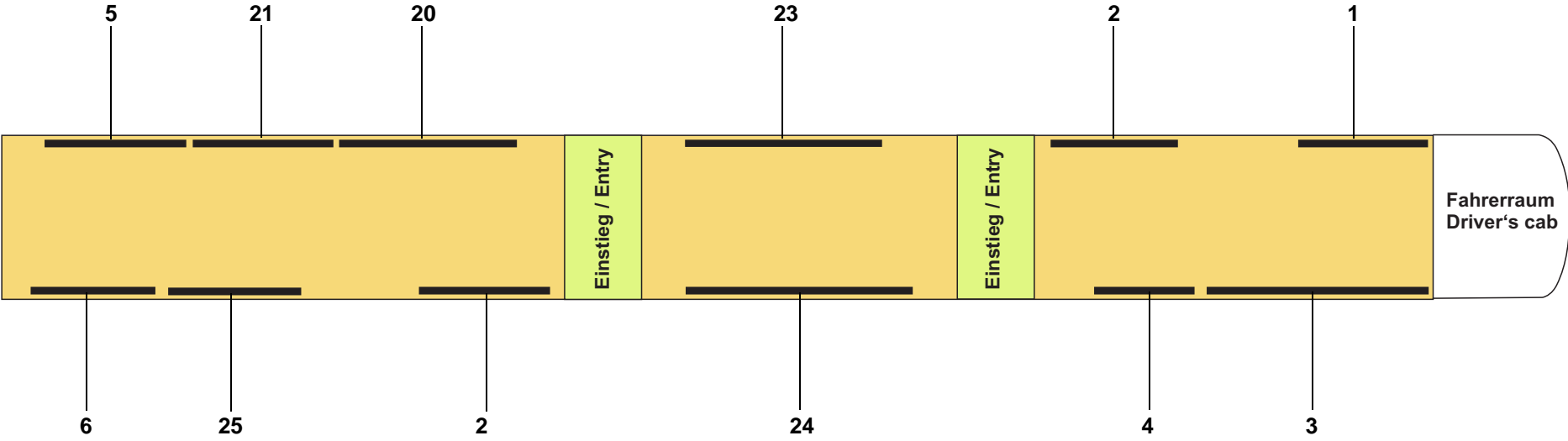


| Pos.                                | Stück<br>Quantity | Bestell-Nr.<br>Part no. | Benennung                  | Description              | Abmessungen / Normteil<br>dimensions / standard part | Variante / Bemerkungen<br>version / remarks |
|-------------------------------------|-------------------|-------------------------|----------------------------|--------------------------|--|---|
| <b>Elektrik / electrical system</b> |                   |                         |                            |                          |  |   |
| 0                                   | REF               |                         | Elektrik                   | electrical system        |  |   |
| 1                                   | 1                 | 68725B                  | • SPS Schutzmodul          | protective modul         |  |   |
| 2                                   | 1                 | 11122498A               | • SPS Melsec FX1S-30MT-DDS | SPS Melsec FX1S-30MT-DDS |  | ersetzt / replaces FX0S                     |
| 3                                   | 1                 | 93306B                  | • Vorwahuhr AST            | digital timer AST        |  |   |
| 4                                   | 10                | 49058C                  | • Relais                   | relay                    | 50 A 24 V  |   |
| 5                                   | 1                 | 95035B                  | • Multiplexer AST          | multiplexer AST          |  | Wagen / wagon B LINT 41                     |
| 6                                   | 1                 | 68008C                  | • DC/DC Converter          | DC/DC converter          |  |   |
| 7                                   | 1                 | 92965A                  | • Wabco Steuerung Schiene  | Wabco control unit rail  |  |   |
| 8                                   | 1                 | 94715C                  | • Überspannungsschutz      | overvoltage protector    | MT 2-PE/S 24 AC                                      |   |
| 9<br>no fig.                        | 1                 | 1103924A                | • SPS Melsec-Umrüstkit     | SPS Melsec refitting kit |  | von FX0S auf FX1S<br>from FX0S to FX1S      |

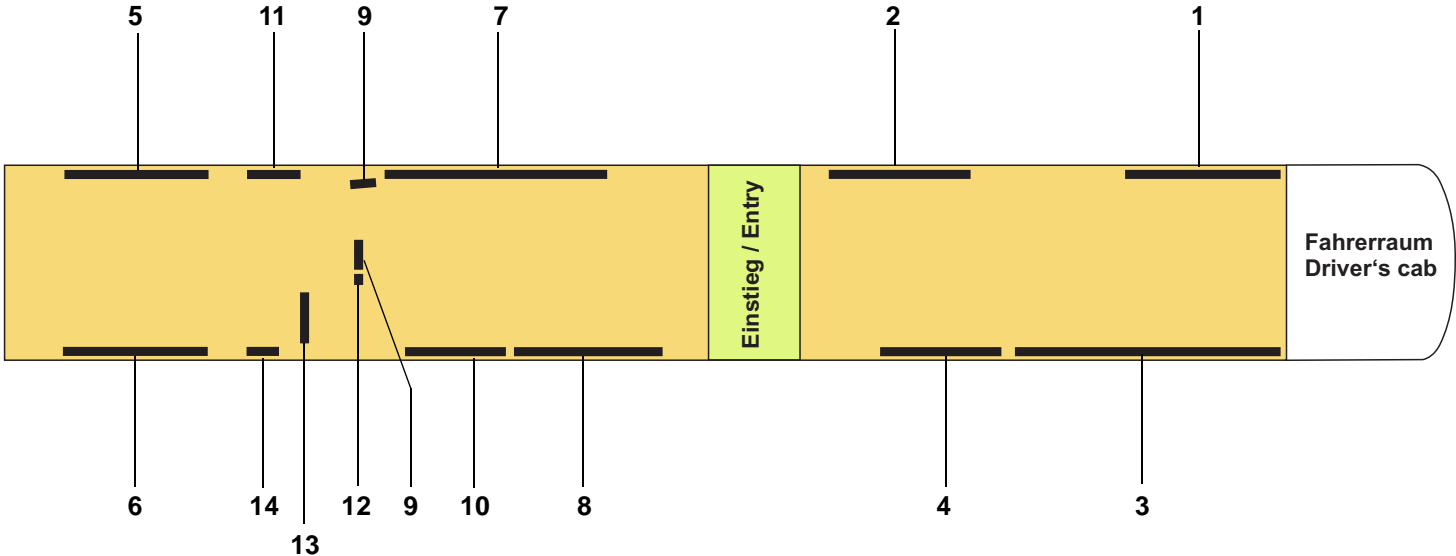




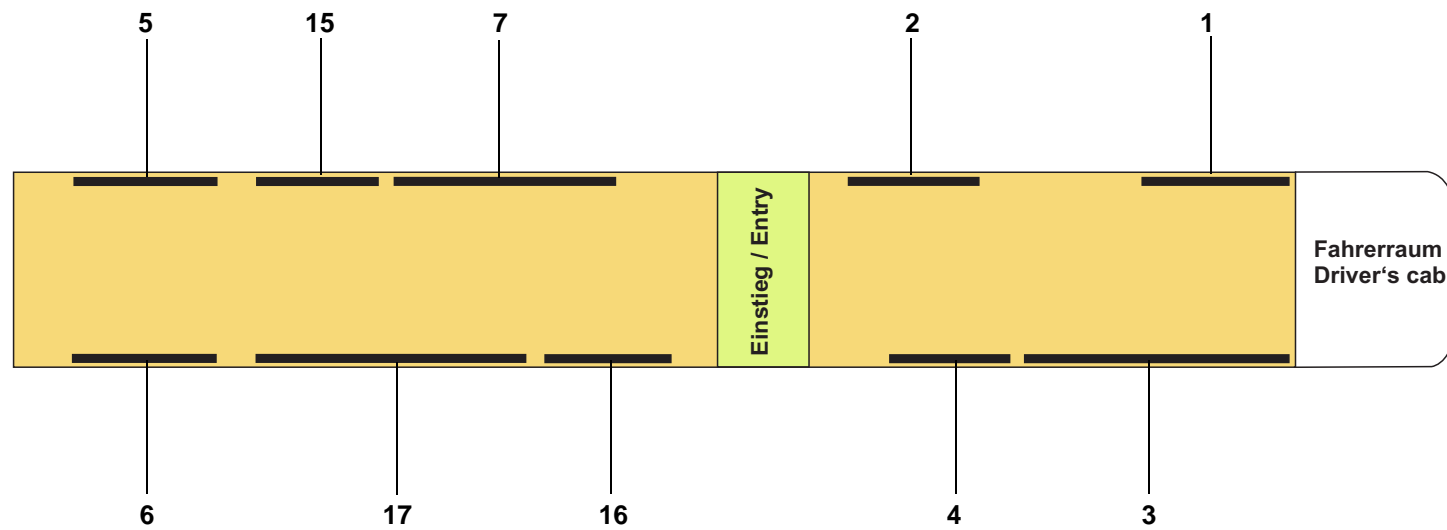
| Pos.  | Stück<br>Quantity | Bestell-Nr.<br>Part no. | Benennung   | Description   | Abmessungen / Normteil<br>dimensions / standard part | Variante / Bemerkungen<br>version / remarks                            |
|---|-------------------|-------------------------|---|---|--|--|
| <b>Konvektoren und Blenden / convector heaters and screens - LINT 54 NF DNU - A-Wagen</b> |                   |                         |   |   |  |  |
| 0   | REF               |                         | Konvektoren und Blenden                           | convectors and screens                              |  | siehe / see fig. 1-7, 1-31   |
| 1   | NB                | 11123165A               | • Konvektor P 200                                 | convector P 200                                     | 1908 lg.   |  |
| 2   | NB                | 11123164A               | • Konvektor P 200                                 | convector P 200                                     | 1926 lg.   |  |
| 3   | NB                | 11123163A               | • Konvektor P 200                                 | convector P 200                                     | 3578 lg.   |  |
| 4   | NB                | 11123162A               | • Konvektor P 200                                 | convector P 200                                     | 1600 lg.   |  |
| 5   | NB                | 11123161A               | • Konvektor P 200                                 | convector P 200                                     | 2065 lg.   |  |
| 6   | NB                | 11123160A               | • Konvektor P 200                                 | convector P 200                                     | 2065 lg.   |  |
| 9   | NB                | 1104212C                | • Konvektor P 200                                 | convector P 200                                     | 330 lg.  | nur Gerippe, für Roediger Ventil<br>framework only, for Roediger valve |
| 10  | NB                | 11123157A               | • Konvektor P 90                                  | convector P 90                                      | 1356 lg.   |  |
| 12  | NB                | 11118746A               | • Thermostat                                      | thermostat  |  | an Toilette, at toilet   |
| 18  | NB                | 11123166A               | • Konvektor P 200 mit Halter und Temperaturfühler | convector P 200 with bracket and temperature sensor | 2065 lg.   |  |
| 19  | NB                | 11123167A               | • Konvektor P 200                                 | convector P 200                                     | 1430 lg.   |  |
| 20  | NB                | 11123168A               | • Konvektor P 200                                 | convector P 200                                     | 3076 lg.   |  |
| 21  | NB                | 11123169A               | • Konvektor P 200                                 | convector P 200                                     | 2200 lg.   |  |
| 22  | NB                | 11123170A               | • Konvektor P 200                                 | convector P 200                                     | 3800 lg.   |  |
| 30<br>no fig.   | NB                | 1102235B                | • Konvektor P 200                                 | convector P 200                                     | 70 lg.   |  |
| 31<br>no fig.   | NB                | 1102234B                | • Konvektor P 200                                 | convector P 200                                     | 150 lg.  |  |
| 32<br>no fig.   | NB                | 1102233B                | • Konvektor P 200                                 | convector P 200                                     | 220 lg.  |  |



| Pos.  | Stück<br>Quantity | Bestell-Nr.<br>Part no. | Benennung   | Description   | Abmessungen / Normteil<br>dimensions / standard part | Variante / Bemerkungen<br>version / remarks |
|---|-------------------|-------------------------|---|---|--|---|
| <b>Konvektoren und Blenden / convector heaters and screens - LINT 54 NF DNU - B-Wagen</b> |                   |                         |   |   |  |   |
| 0   | REF               |                         | Konvektoren und Blenden                           | convectors and screens                              |  | siehe / see fig. 1-7, 1-31                  |
| 1   | NB                | 11123165A               | • Konvektor P 200                                 | convector P 200                                     | 1908 lg.   |   |
| 2   | NB                | 11123164A               | • Konvektor P 200                                 | convector P 200                                     | 1926 lg.   |   |
| 3   | NB                | 11123163A               | • Konvektor P 200                                 | convector P 200                                     | 3578 lg.   |   |
| 4   | NB                | 11123162A               | • Konvektor P 200                                 | convector P 200                                     | 1600 lg.   |   |
| 5   | NB                | 11123161A               | • Konvektor P 200                                 | convector P 200                                     | 2065 lg.   |   |
| 6   | NB                | 11123160A               | • Konvektor P 200                                 | convector P 200                                     | 2065 lg.   |   |
| 20  | NB                | 11123168A               | • Konvektor P 200                                 | convector P 200                                     | 3000 lg.   |   |
| 21  | NB                | 11123169A               | • Konvektor P 200                                 | convector P 200                                     | 2200 lg.   |   |
| 23  | NB                | 11123171A               | • Konvektor P 200 mit Halter und Temperaturfühler | convector P 200 with bracket and temperature sensor | 3040 lg.   |   |
| 24  | NB                | 11123172A               | • Konvektor P 200                                 | convector P 200                                     | 3670 lg.   |   |
| 25  | NB                | 11123173A               | • Konvektor P 200                                 | convector P 200                                     | 2050 lg.   |   |
| 26<br>no fig.   | NB                | 11137741A               | • Konvektor P 200                                 | convector P 200                                     | 3300 lg.   |   |
| 30<br>no fig.   | NB                | 1102235B                | • Konvektor P 200                                 | convector P 200                                     | 70 lg.   |   |
| 31<br>no fig.   | NB                | 1102234B                | • Konvektor P 200                                 | convector P 200                                     | 150 lg.  |   |
| 32<br>no fig.   | NB                | 1102233B                | • Konvektor P 200                                 | convector P 200                                     | 220 lg.  |   |



| Pos.  | Stück<br>Quantity | Bestell-Nr.<br>Part no. | Benennung   | Description   | Abmessungen / Normteil<br>dimensions / standard part | Variante / Bemerkungen<br>version / remarks |
|---|-------------------|-------------------------|---|---|--|---|
| <b>Konvektoren und Blenden / convector heaters and screens - LINT 41 NF DNU - A-Wagen</b> |                   |                         |   |   |  |   |
| 0   | REF               |                         | Konvektoren und Blenden                             | convectors and screens                              |  | siehe / see fig. 1-7, 1-31                  |
| 1   | NB                | 11123165A               | • Konvektor P 200                                   | convector P 200                                     | 1908 lg.   |   |
| 2   | NB                | 11123164A               | • Konvektor P 200                                   | convector P 200                                     | 1926 lg.   |   |
| 3   | NB                | 11123163A               | • Konvektor P 200                                   | convector P 200                                     | 3578 lg.   |   |
| 4   | NB                | 11123162A               | • Konvektor P 200                                   | convector P 200                                     | 1600 lg.   |   |
| 5   | NB                | 11123161A               | • Konvektor P 200                                   | convector P 200                                     | 2065 lg.   |   |
| 6   | NB                | 11123160A               | • Konvektor P 200                                   | convector P 200                                     | 2065 lg.   |   |
| 7   | NB                | 11123159A               | • Konvektor P 200 mit Halter und Temperaturfühler   | convector P 200 with bracket and temperature sensor | 3134 lg.   |   |
| 8   | NB                | 11123158A               | • Konvektor P 200                                   | convector P 200                                     | 1925 lg.   |   |
| 9   | NB                | 1104212C                | • Konvektor P 200, nur Gerippe, für Roediger-Ventil | convector P 200, frame only for Roediger valve      | 330 lg.  |   |
| 10  | NB                | 11123157A               | • Konvektor P 90 flach                              | convector P 90 flat                                 | 1356 lg.   |   |
| 11  | NB                | 1104209A                | • Konvektor P 200                                   | convector P200                                      | 700 lg.  |   |
| 12  | NB                | 11118746A               | • Thermostat  | thermostat  |  | an Toilette, at toilet                      |
| 13  | NB                | 1104211B                | • Konvektor P 200                                   | convector P200                                      | 650 lg.  |   |
| 14  | NB                | 11114840A               | • Konvektor P 200                                   | convector P200                                      | 390 lg.  |   |
| 30<br>no fig.   | NB                | 1102234B                | • Blende, Konvektor P 200                           | screen, convector P 200                             | 150 lg.  |   |
| 31<br>no fig.   | NB                | 1102233B                | • Blende, Konvektor P 200                           | screen, convector P 200                             | 220 lg.  |   |
| 32<br>no fig.   | NB                | 1102235B                | • Blende, Konvektor P 200                           | screen, convector P 200                             | 70 lg.   |   |
| 33<br>no fig.   | NB                | 1102238A                | • Endkappe für P 200                                | end cap for P 200                                   |  |   |



| Pos.  | Stück<br>Quantity | Bestell-Nr.<br>Part no. | Benennung   | Description   | Abmessungen / Normteil<br>dimensions / standard part | Variante / Bemerkungen<br>version / remarks |
|---|-------------------|-------------------------|---|---|--|---|
| <b>Konvektoren und Blenden / convector heaters and screens - LINT 41 NF DNU - B-Wagen</b> |                   |                         |   |   |  |   |
| 0   | REF               |                         | Konvektoren und Blenden                           | convectors and screens                              |  | siehe / see fig. 1-7, 1-31                  |
| 1   | NB                | 11123165A               | • Konvektor P 200                                 | convector P 200                                     | 1908 lg.   |   |
| 2   | NB                | 11123164A               | • Konvektor P 200                                 | convector P 200                                     | 1926 lg.   |   |
| 3   | NB                | 11123163A               | • Konvektor P 200                                 | convector P 200                                     | 3578 lg.   |   |
| 4   | NB                | 11123162A               | • Konvektor P 200                                 | convector P 200                                     | 1600 lg.   |   |
| 5   | NB                | 11123161A               | • Konvektor P 200                                 | convector P 200                                     | 2065 lg.   |   |
| 6   | NB                | 11123160A               | • Konvektor P 200                                 | convector P 200                                     | 2065 lg.   |   |
| 7   | NB                | 11123159A               | • Konvektor P 200 mit Halter und Temperaturfühler | convector P 200 with bracket and temperature sensor | 3134 lg.   |   |
| 15  | NB                | 11123156A               | • Konvektor P 200                                 | convector P200                                      | 1658 lg.   |   |
| 16  | NB                | 11123155A               | • Konvektor P 200                                 | convector P200                                      | 1760 lg.   |   |
| 17  | NB                | 11123154A               | • Konvektor P 200                                 | convector P200                                      | 3670 lg.   |   |
| 30<br>no fig.   | NB                | 1102234B                | • Blende, Konvektor P 200                         | screen, convector P 200                             | 150 lg.  |   |
| 31<br>no fig.   | NB                | 1102233B                | • Blende, Konvektor P 200                         | screen, convector P 200                             | 220 lg.  |   |
| 32<br>no fig.   | NB                | 1102235B                | • Blende, Konvektor P 200                         | screen, convector P 200                             | 70 lg.   |   |
| 33<br>no fig.   | NB                | 11120617A               | • Blende, Konvektor P 200                         | screen, convector P 200                             | 280 lg.  |   |
| 34<br>no fig.   | NB                | 1102238A                | • Endkappe für P 200                              | end cap for P 200                                   |  |   |





---

Valeo Thermal Commercial Vehicles Germany GmbH  
Friedrichshafener Str. 7 - 82205 Gilching - Germany - Tel. +49 8105 7721-0 - Fax +49 8105 7721-889  
[www.valeo-thermalbus.com](http://www.valeo-thermalbus.com) - [service-valeobus@valeo.com](mailto:service-valeobus@valeo.com)