

Technical Service Bulletin

Date: April 27, 2020

Subject: AC Clutch Relay

Models: SCHOOL BUS INSTALLATIONS

Problems: Some school bus AC installation combinations draw more current than can be supplied by the control system can handle.

Affected Products:

School bus installations

Solution: As a result an AC clutch relay circuit must be added to support the excessive load.

Install a properly sized and application appropriate circuit protection device a maximum of 18" from the power source.

Parts Required: Unless otherwise specified

Quantity	Description	Part Number
1	Compressor Relay Harness	11137890A

Procedure:

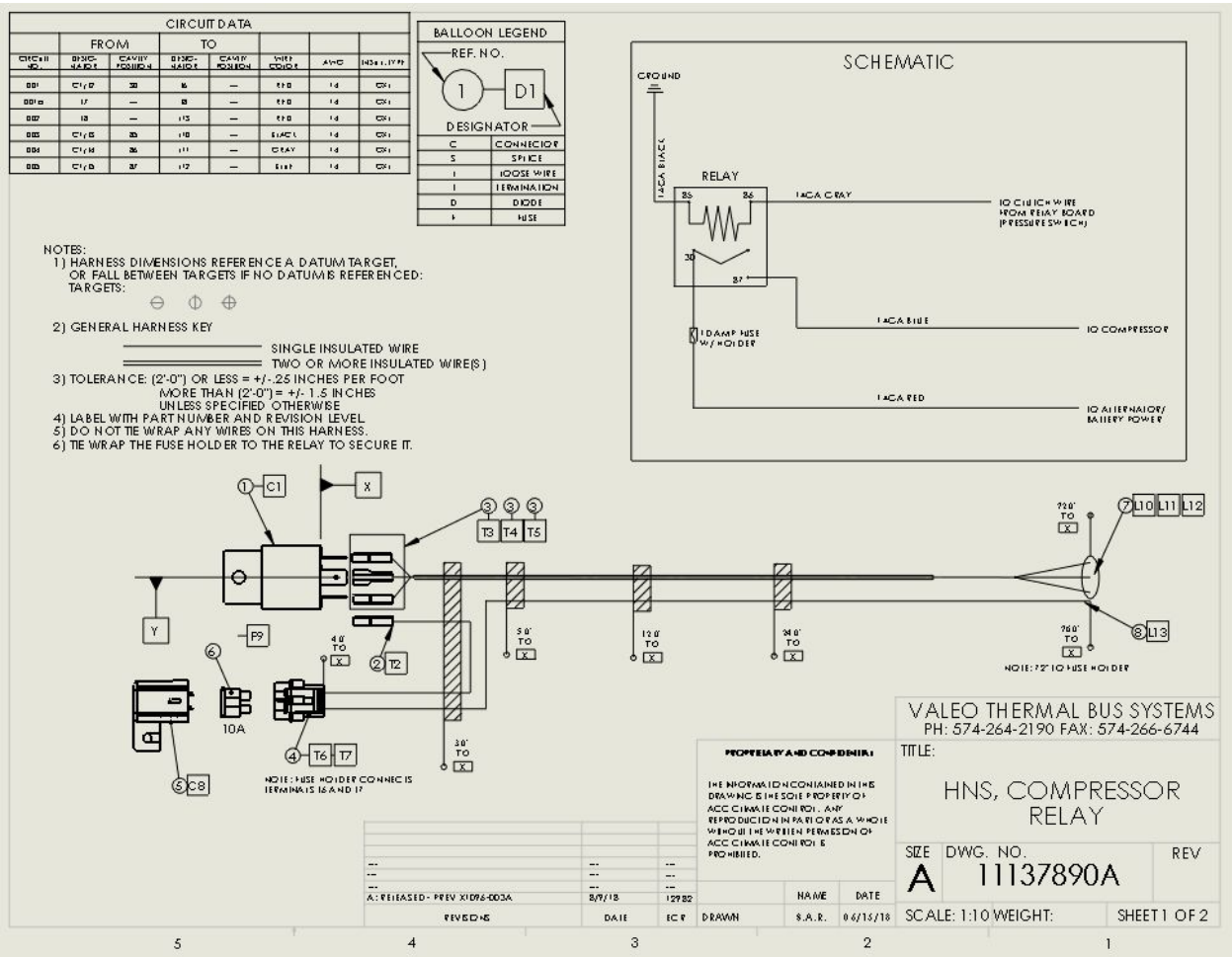
As applications and installations vary, the compressor relay harness should be added following proper electrical installation practices.

The final installation should adhere to the schematic shown on the harness print on the following page.

Author|Engineering|Scott Rusthoven



Technical Service Bulletin



Author | Engineering | Scott Rusthoven

