

Technical Service Bulletin

Date: April 1, 2020

Subject: Main Power Feed Circuit Protection

Models: ALL SCHOOL BUS INSTALLATIONS

Problems: Installations require a main circuit protection device a maximum of 18 inches from the battery.

Affected Products:

All school bus installations

Solution: Install a properly sized and application appropriate circuit protection device a maximum of 18" from the power source.

Parts Required: Unless otherwise specified

Quantity	Description	Part Number
1	Megafuse Holder	11134770A
1	175Amp Megafuse	11118217A

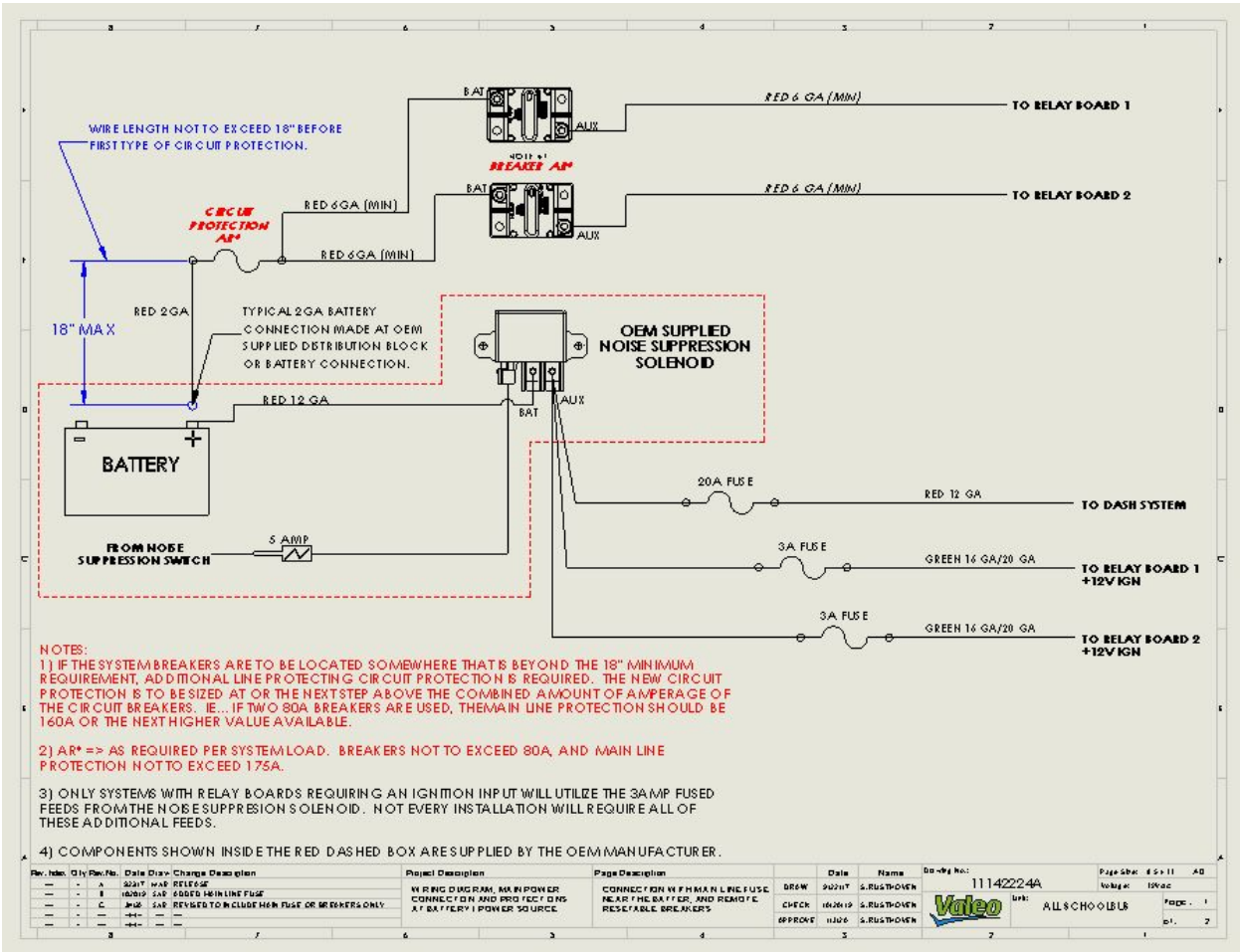
Procedure:

As applications and installations vary, a main line circuit protection device should be added following proper electrical installation practices.

The final installation should adhere to one of the following wiring diagrams.



Technical Service Bulletin



Technical Service Bulletin

