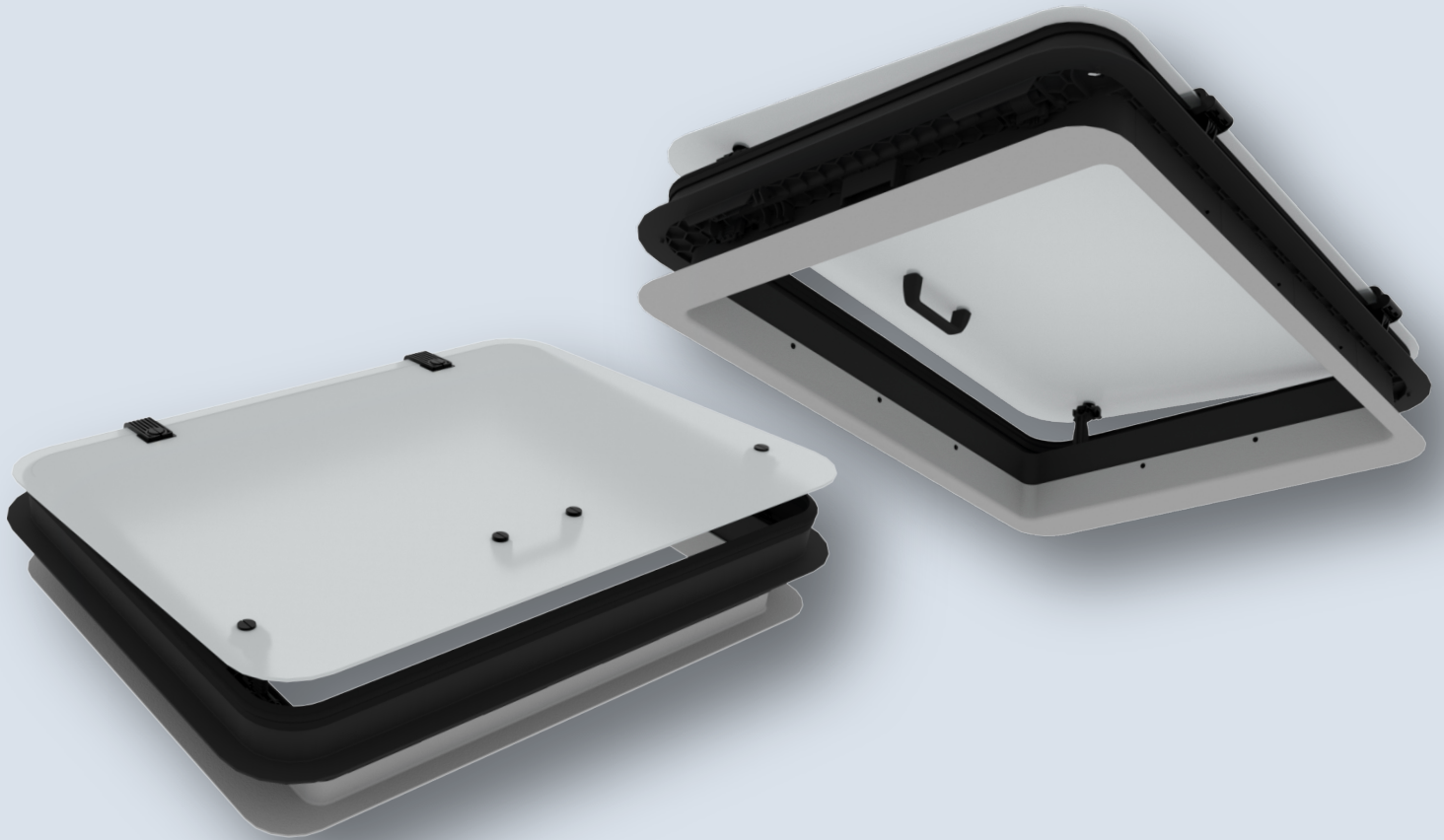


# FIT SERIES

## TRANSVERSAL FIT



## Global Safety with CO2 free ventilation Agile and space saving installation

FIT series transversal versions are a solution what the industry has been looking for. Limited amount of space on the roof and more demanding legal requirements in terms of material and size are challenges. We at Valeo see that the transversal installation solves some of them.

The Fit Series Emergency Exit Ventilator hatches are designed to meet the Global Safety standards. It will comply with the following regulations: UN ECE, FMVSS, CCAP, and ADR 44/02.

The hatches are available with manual or electric 12/24V remote control mechanisms and with glass or plastic domes. The electric version can be operated with analog switches, with a dedicated Driver Unit, or with a CAN control. Thus the ventilation system can be fully integrated to the vehicle HVAC environment.

Transversal FIT is limited to open only at one end. This makes the hatch a fraction lighter and a fraction more affordable - without jeopardizing the main purpose: safety

Escape mechanisms are independent from interior trim. This makes it possible for the body builder to design their own inner trim or use the Valeo universal version.

## HIGHLIGHTS



### Safety

- Easy emergency escape release
- Boosts air exchange in vehicle
- No glass break hammer required (optional)
- Minimizes infection risk



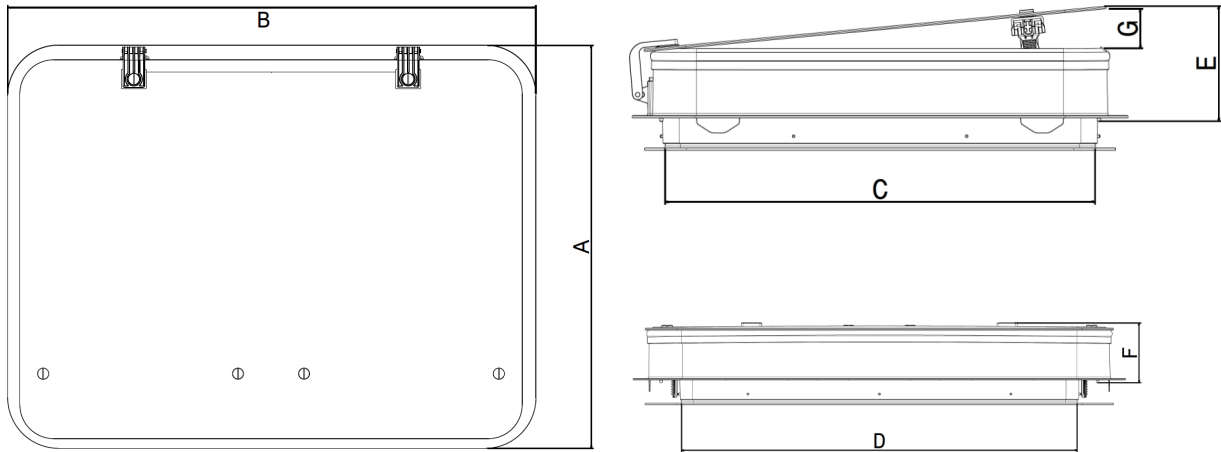
### Comfort

- Manual or electric remote operation
- Analog or digital interface
- Dedicated Driver Unit available
- CAN integration



### Environmentally friendly

- Materials are recyclable
- Maintenance free for life
- No operation cost
- Integration to vehicle HVAC system
- Light weight saves energy



## TECHNICAL DATA

| FIT Series Transversal Fitting | FIT                                 | FIT Comfort                                | FIT Clear                            | FIT Clear Comfort                          |
|--------------------------------|-------------------------------------|--|--------------------------------------|--|
| Cut-off (mm)                   | 630 x 880 <sup>±3</sup> R60         | 630 x 880 <sup>±3</sup> R60                | 630 x 880 <sup>±3</sup> R60          | 630 x 880 <sup>±3</sup> R60                |
| Dome (mm)                      | (A) 748 x (B) 978                   | (A) 748 x (B) 978                          | (A) 690 x (B) 910                    | (A) 690 x (B) 910                          |
| Interior opening (mm)          | (C) 615 x (D) 746                   | (C) 615 x (D) 746                          | (C) 615 x (D) 746                    | (C) 615 x (D) 746                          |
| Height open / closed (mm)      | (E) 147 / (F) 96                    | (E) 147 / (F) 96                           | (E) 121 / (F) 70                     | (E) 121 / (F) 70                           |
| Ventilation opening (mm)*      | (G) 48                              | (G) 48                                     | (G) 48                               | (G) 48                                     |
| Weight Hatch (kg)**            | 8.9                                 | 9.1  | 8.0                                  | 9.0  |
| Weight inner trim (kg)**       | 0.5                                 | 0.5  | 0.5                                  | 0.5  |
| Operation Voltage (V)          | (-)                                 | 9-32 VDC                                   | (-)                                  | 9-32 VDC                                   |
| Control unit                   | (-)                                 | Digital or Analog control<br>DHC2, DU, CAN | (-)                                  | Digital or Analog control<br>DHC2, DU, CAN |
| Dome                           | ASA protected ABS                   | ASA protected ABS                          | 4mm Safety Glass<br>White Milk Glass | 4mm Safety Glass<br>White Milk Glass       |
| Fuse (A)                       | (-)                                 | 5A   | (-)                                  | 5A   |
| Glazing Material               | (-)                                 | (-)  | UN ECE R.43.01s2                     | UN ECE R.43.01s2                           |
| Emergency Exit Approval        | R.107.08, FMVSS,<br>CCAP, ADR 44/02 | R.107.08, FMVSS,<br>CCAP, ADR 44/02        | R.107.08, FMVSS,<br>CCAP, ADR 44/02  | R.107.08, FMVSS,<br>CCAP, ADR 44/02        |
| Flammability approval          | UN ECE R.118.03                     | UN ECE R.118.03                            | UN ECE R.118.03                      | UN ECE R.118.03                            |
| EMC approval                   | (-)                                 | UN ECE R10.05                              | (-)                                  | UN ECE R10.05                              |