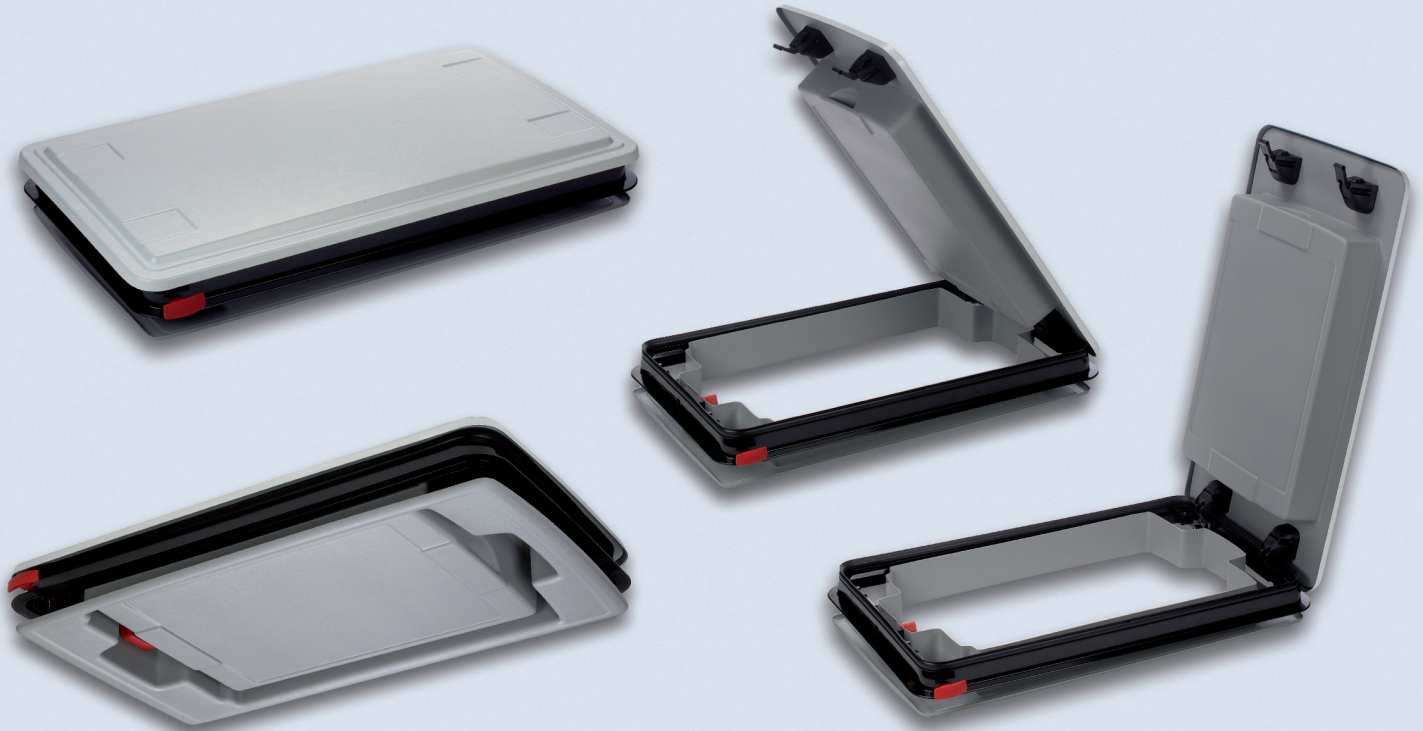


ELEXX



Safety, Service and Comfort

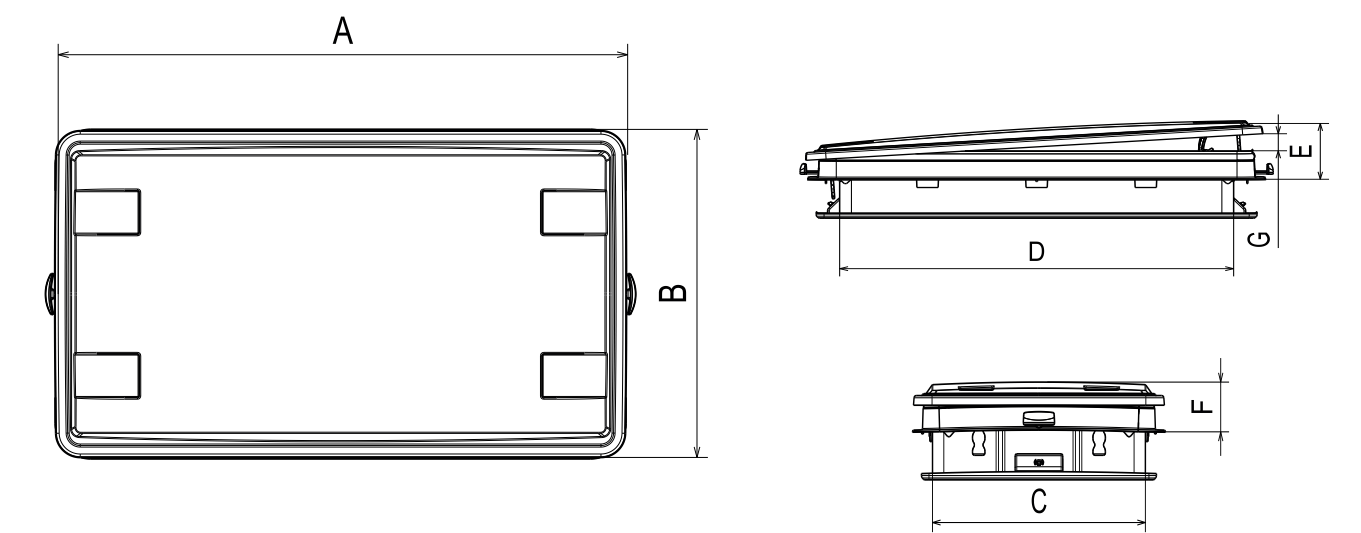
Elexx is the first roof hatch of its kind. The combination of a service hatch with central locking system is unique. The service function makes it possible to open the hatch like a door due to the clever patented hinged mechanisms. Accessing the roof through a service hatch to maintain A/C or other devices on the roof offers a huge easy to operate advantage for customers.

Since the hatch can be opened like a door, Elexx furtheron provides excellent ventilation performance for the passengers even while stationary.

The safety-relevant central locking system prevents from unwanted entry. All in all Elexx meets all safety and comfort requirements of today.

FEATURES

- Three in one unit: service – safety – ventilation
 - FMVSS-571-217 emergency exit
 - Easy to operate, maintenance free
 - Fast mounting by bonding
 - Lightweight with a total mass of 9,9 kg
 - Excellent heat and cold insulation due to dual-shell dome
- Completely UV resistant due to dual-layer outer surface material, durable
 - Extremely strong, yet lightweight composite mechanism, more wind resistant
 - Hinged service hatch
 - Central locking system
 - New inner frame with a more elegant look inside the vehicle



TECHNICAL DATA

Measurements (mm)	Elexx hatch	Elexx hatch new
Roof Cut out (mm)	530 x 970	530 x 970
A Dome Length (mm)	1042	1042
B Dome width (mm)	599	599
C Inner width (mm)	510	505
D Inner Length (mm)	770	802
E Height (open) (mm)	183	132
F Height (closed) (mm)	94	72
G Opening (mm)	69	60

Mass	Roof hatch 7.8 kg	Interior trim ≈1.5 kg / T=50	
Other	Glass: 4mm safety glass, LT ≈16%	Ventilation operation: Manual	Emergency release: Hammer / handles
Approvals	UN ECE R.107r4 Emergency Exit	UN ECE R.118.01 Flammability	